

Jennifer Anders
Chair
Montana

Tim Baker
Montana

Guy Norman
Washington

Patrick Oshie
Washington



Northwest Power and Conservation Council

April 30, 2019

Richard Devlin
Vice Chair
Oregon

Ted Ferrioli
Oregon

Jim Yost
Idaho

Jeffery C. Allen
Idaho

MEMORANDUM

TO: Power Committee Members

FROM: Tina Jayaweera, John Ollis

SUBJECT: Demand Response Process for 2021 Power Plan

BACKGROUND:

Presenter: Tina Jayaweera

Summary: In preparation for the 2021 Power Plan, staff will be providing the Power Committee a series of presentations on different aspects to developing the Plan. This presentation will be on the development of demand response supply curves.

Relevance: Demand response is one of the options considered by the Regional Portfolio Model when determining a low-cost resource mix for the plan horizon. To analyze DR in the RPM, staff develops a supply curve, that provides bundles of the amount of DR available at different price points, with information on seasonal attributes.

Workplan: A.2.1 Prepare DR supply curves for the 2021 Plan

More Info: In 2015, staff provided an overview of DR methodology in the plan for the Seventh Plan.
https://www.nwcouncil.org/sites/default/files/2015_0210_p1.pdf

Demand Response Supply Curves – Process for the 2021 Plan

Power Committee

May 7, 2019

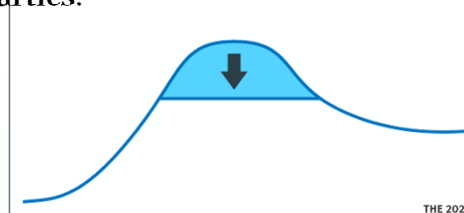


THE 2021
NORTHWEST
POWER PLAN
FOR A SECURE & AFFORDABLE
ENERGY FUTURE

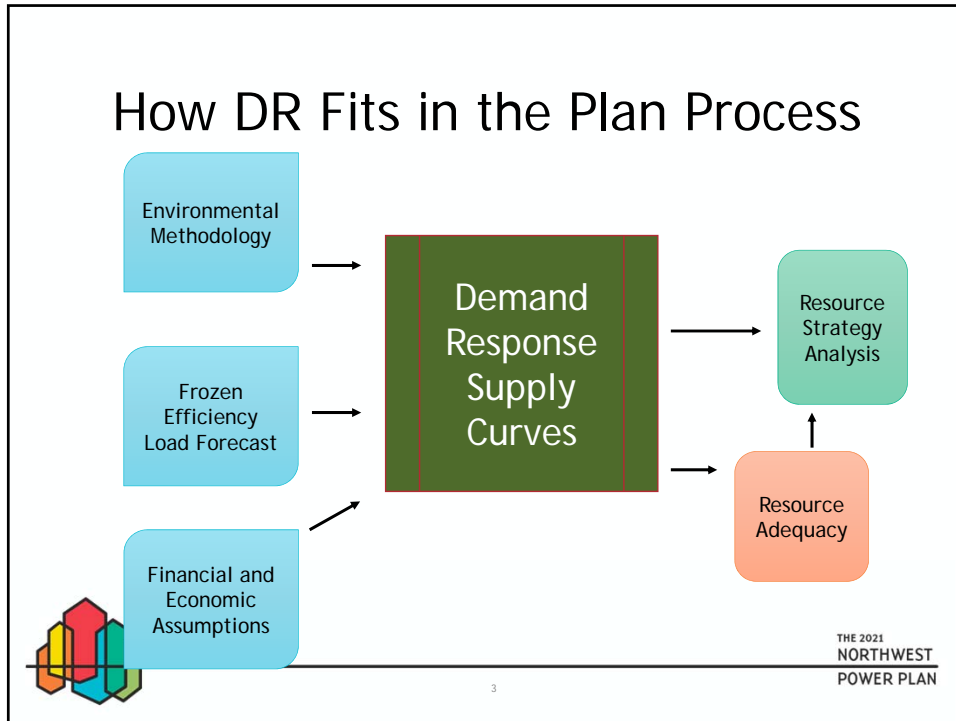
What is Demand Response

Demand response is a non-persistent intentional change in net electricity usage by end-use customers from normal consumptive patterns in response to a request on behalf of, or by, a power and/or distribution/transmission system operator. This change is driven by an agreement, potentially financial, or tariff between two or more participating parties.

Defined by DRAC Aug 2017





THE 2021
NORTHWEST
POWER PLAN

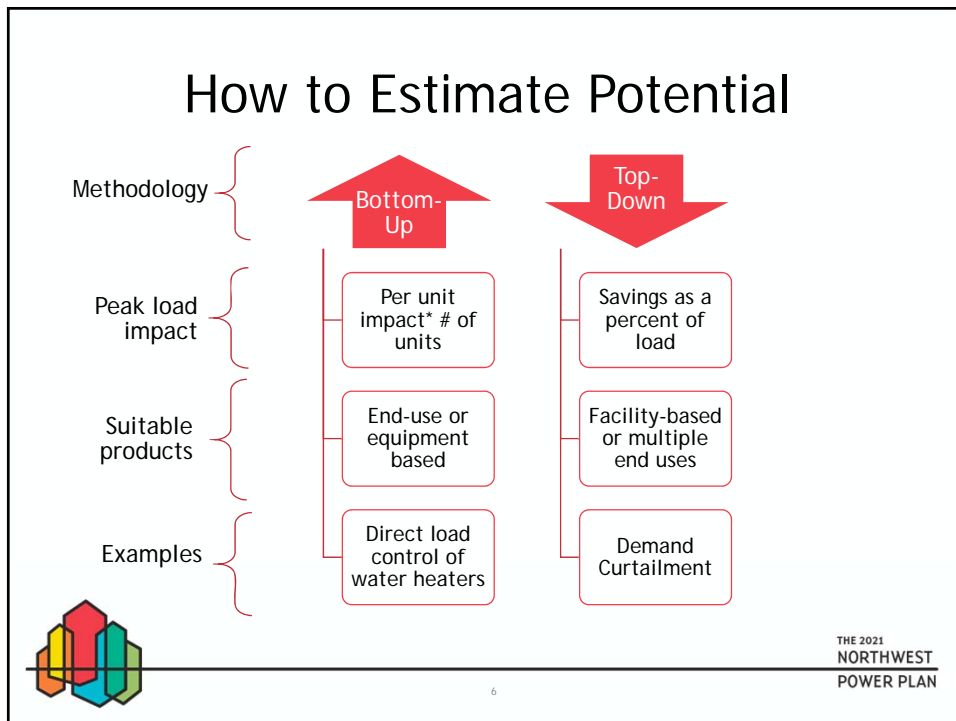
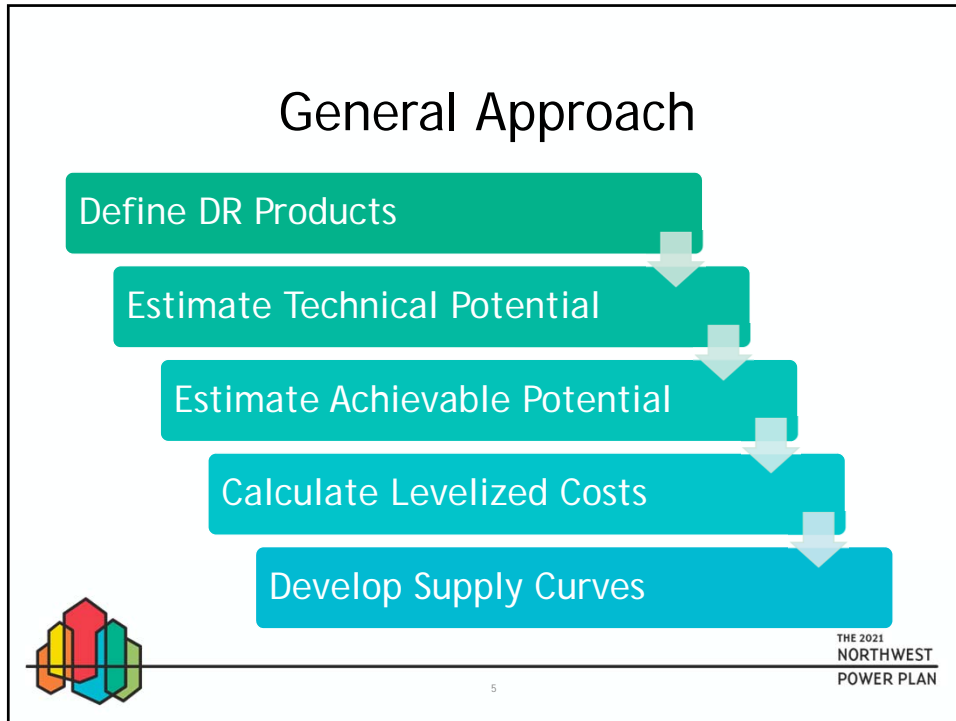


Types of DR

- **Firm**
 - Allows either interruptions of electrical equipment or appliances that are directly controlled by the utility or are scheduled ahead of time.
- **Non-firm**
 - Outside of the utility’s direct control and are driven by pricing.

THE 2021
NORTHWEST
POWER PLAN



Workplan for 2019-2020

Q2 2019

- Select firm products
- Decide on non-firm options

Q3-Q4 2019

- Estimate costs, impacts, achievability for products
- Estimate ramp rates (align with EE)

Q4 2019- Q1 2020

- Estimate achievable potential

Q1 2020

- Develop bundles for RPM

Q3 2020

- Action Plan recommendations

