

Bill Bradbury
Chair
Oregon

Henry Lorenzen
Oregon

W. Bill Booth
Idaho

James A. Yost
Idaho



Jennifer Anders
Vice Chair
Montana

Pat Smith
Montana

Tom Karier
Washington

Phil Rockefeller
Washington

September 4, 2013

MEMORANDUM

TO: Fish and Wildlife Committee

FROM: Jim Ruff – Manager, Mainstem Passage and River Operations

SUBJECT: Influence of multiple dam passage on survival of juvenile Chinook salmon in the Columbia River estuary and coastal ocean

At the September 10, 2013, Council meeting in Coeur d'Alene, David Welch and lead author Erin Rechisky¹ of Kintama Research Services will present the findings of their recent paper entitled "Influence of multiple dam passage on survival of juvenile Chinook salmon in the Columbia River estuary and coastal ocean." Their 2013 paper, which was published in the Proceedings of the National Academy of Sciences of the U.S.A. (PNAS), is attached for your review (Attachment 1).

Representatives of the fishery agencies and tribes' Comparative Survival Study (CSS) will also be present at the Council meeting and will likely want to provide some comments on this paper. Accordingly, attached for your review is Steve Haeseker's (CSS) letter commentary on Kintama's PNAS paper, as well as Kintama's subsequent letter rebuttal to the CSS critique (see Attachments 2 and 3).

Finally, shortly after the Rechisky et al. paper was published, the PNAS Editorial Board requested a "commentary" review from Ray Hilborn (U. of WA) about the article. Commentary reviews call attention to papers of particular note and are written at the invitation of the Editorial Board. Commentaries are not limited in length, unlike the letter responses which are limited to a maximum of 500 words. Dr. Hilborn's commentary is also attached for your information (Attachment 4).

Attachments (4)

w:\jr\ww\2013\9-04-13 kintama packet memo.docx

¹ Erin Rechisky plans to join this discussion via conference phone.

Influence of multiple dam passage on survival of juvenile Chinook salmon in the Columbia River estuary and coastal ocean

Erin L. Rechisky¹, David W. Welch, Aswea D. Porter, Melinda C. Jacobs-Scott, and Paul M. Winchell

Kintama Research Services Ltd., Nanaimo, BC, Canada V9S 3B3

Edited by Peter M. Kareiva, The Nature Conservancy, Seattle, WA, and approved February 11, 2013 (received for review November 29, 2012)

Multiple dam passage during seaward migration is thought to reduce the subsequent survival of Snake River Chinook salmon. This hypothesis developed because juvenile Chinook salmon from the Snake River, the Columbia River's largest tributary, migrate >700 km through eight hydropower dams and have lower adult return rates than downstream populations that migrate through only 3 or 4 dams. Using a large-scale telemetry array, we tested whether survival of hatchery-reared juvenile Snake River spring Chinook salmon is reduced in the estuary and coastal ocean relative to a downstream, hatchery-reared population from the Yakima River. During the initial 750-km, 1-mo-long migration through the estuary and coastal ocean, we found no evidence of differential survival; therefore, poorer adult returns of Snake River Chinook may develop far from the Columbia River. Thus, hydrosystem mitigation efforts may be ineffective if differential mortality rates develop in the North Pacific Ocean for reasons unrelated to dam passage.

delayed mortality | marine survival | acoustic telemetry

The Columbia River basin has the fourth largest virgin mean annual discharge in North America and has been classified as “strongly affected” by high fragmentation of the river resulting from the construction of many large dams and from major irrigation consumption (1). Flooding, fish habitat loss, proliferation of nonindigenous aquatic species, and extensive modification of the riparian zone resulted from the river fragmentation; however, this altered river system provides electricity, irrigation, flood control, transportation, and recreation to people in the region. For salmon, dams alter migration routes and speeds and act as large obstacles that adults must navigate around during their migration to upstream spawning grounds (via fish ladders) and that juveniles must pass through (via spill over the dam, fish bypasses, or turbines) during their seaward migration.

Before dam construction, Columbia River basin spring Chinook salmon, *Oncorhynchus tshawytscha*, abundance declined dramatically because of overharvesting (2). Several decades later, populations began to rebound, likely as a result of strict harvest regulations (3) and improved ocean conditions (4). However, salmon populations were further affected by the construction of hydroelectric dams on both the Columbia River and its largest tributary, the Snake River (5–7). Just as construction of the last of four major dams in the lower Snake River was being completed in the late 1970s, an unfavorable change in ocean climate also contributed to the reduced survival of many salmon stocks in southern parts of their range (4, 8). In 1992, Snake River spring Chinook salmon were listed as threatened under the US Endangered Species Act.

Since that time, billions of dollars have been spent on programs to improve smolt (seaward-migrating juvenile salmon) survival through dams and turbines, in tributary habitats, and in the Columbia River estuary (9). As a result, direct smolt mortality at the dams has been successfully reduced (10–12), and survival of Snake River spring Chinook salmon smolts that migrate through the eight-dam, 460-km hydrosystem (a series of four dams in the lower Snake River and four dams in the lower Columbia River) is now typically 50% (13), which is higher than that observed for Chinook salmon populations that migrate a similar distance in the adjacent undammed Fraser River (14). However, despite increases in

freshwater smolt survival, smolt-to-adult return rates (SARs) of the aggregate wild Snake River spring Chinook salmon run averaged only 1.1% over the last decade (15), which is well below the recovery target of 4% and the minimum target of 2% (16). Therefore, approximately one in two smolts survive the hydrosystem, but only one in 50 of these survivors then survives the Columbia River estuary and North Pacific Ocean to return as adults 2–3 y later.

In contrast, the SAR of wild spring Chinook salmon from two mid-Columbia River tributaries (the John Day and Yakima rivers) was 4.3% and 3.1%, respectively, during the same period (15). These smolts only migrate through the lower Columbia River dams and are not exposed to Snake River dam passage. Thus, the lower productivity of the Snake River population was attributed to their combined exposure to the four lower Snake River dams and the four lower Columbia River dams during seaward migration (6, 17). Budy et al. (18) reviewed the possible stressors that Snake River spring Chinook salmon may encounter during their downstream migration and concluded that the accumulation of multiple stressors results in hydrosystem-induced delayed mortality (henceforth, “delayed mortality”) that occurs in the estuary and coastal ocean.

The marine phase, however, may also differentially affect the survival of spring Chinook salmon stocks. Populations may migrate at different speeds or times or to different parts of the ocean, where they are exposed to different conditions, or they may migrate concurrently but respond differentially to ocean conditions (19). Catches of salmonids on the continental shelf during research surveys indicate that Columbia River basin spring Chinook salmon (including the Snake River populations) are widely distributed between Vancouver Island and southeast Alaska during their first summer at sea (20). Recoveries of mature Columbia River spring Chinook salmon from the commercial fishery also indicate that ocean distributions vary considerably (21). Coastal migration patterns appear to be consistent between years, regardless of changes in ocean conditions, and this lack of plasticity suggests a genetic control that may prevent populations from migrating away from poor-quality marine areas (20).

Such behavior could also explain why, despite improved ocean conditions since 1998–1999 and correlating higher adult return rates, Snake River spring Chinook salmon SARs covary with, but remain lower than, mid-Columbia populations (22). In contrast, river conditions (such as faster river velocity during smolt migration) were associated with improved adult returns, in addition to cold sea temperatures and increased coastal upwelling (23). Freshwater smolt survival during seaward migration and subsequent SARs were also positively correlated, supporting the

Author contributions: D.W.W. designed research; E.L.R., M.C.J.-S., and P.M.W. performed research; E.L.R. and A.D.P. analyzed data; and E.L.R., D.W.W., and A.D.P. wrote the paper.

Conflict of interest statement: D.W.W. is president and owner of Kintama Research Services, an environmental consultancy that designed and operates the main elements of the acoustic telemetry array described in this article.

This article is a PNAS Direct Submission.

Freely available online through the PNAS open access option.

¹To whom correspondence should be addressed. E-mail: erin.rechisky@kintama.com.

This article contains supporting information online at www.pnas.org/lookup/suppl/doi:10.1073/pnas.1219910110/-DCSupplemental.

hypothesis that difficult or slow migration through the hydro-system results in delayed mortality in the estuary and ocean (24).

These analyses, however, are based on mark-recapture data from fish that were tagged as juveniles and were then captured or detected as returning adults, rather than direct measurements of survival during the critical weeks in the estuary and coastal ocean immediately after dam passage. Stressful freshwater passage subsequently manifesting itself as mortality in the ocean, and the direct effects of the ocean on survival (both soon after ocean entry and for the rest of the marine phase), are confounded when using adult return rates. The only way to discriminate between these sources of mortality is to directly estimate survival downstream of the final dam during estuarine and early marine migration.

The development of acoustic tags small enough to surgically implant into salmon smolts, and the large-scale telemetry arrays with which to track them, provides a technique for directly estimating survival in the lower reaches of large rivers (14, 25–27) and into the coastal ocean (28–32), making it unnecessary to wait 2–3 y for the adults to return before evaluating delayed mortality. Using a continental-scale acoustic telemetry array (Fig. 1), we tracked the movements and estimated survival of size-matched groups of acoustic-tagged, 1-y-old hatchery spring Chinook salmon smolts from the Snake River and from a downstream population from the Yakima River to northern Vancouver Island, a distance of 750 km beyond the final dam. SARs for the Yakima River population, which migrates through half the number of dams, were, on average, 3.4 times higher than for the Snake River population (15) during this study. We then used an information theoretic approach (33) to investigate whether survival of Snake River smolts was lower than that of Yakima River smolts. Our results substantially extend the period of life history during which it is possible to address whether delayed mortality occurs in juvenile salmon from the Columbia River basin and expand and further support the findings of our first-year pilot study in 2006 (28).

Results

Estimated survival in each of the migration segments in the area of comigration was similar for Snake and Yakima River spring Chinook salmon (Fig. 2). From Lake Wallula to Lake Celilo, survival ranged between 0.72–0.75 for Snake River smolts and 0.63–0.87 for Yakima River smolts (Table 1; see Table S1 for the number of fish detected on each subarray). From Lake Celilo to McGowans Channel, survival ranged between 0.8–1.0 for Snake River smolts and 0.71–1.0 for Yakima River smolts. In 2006, survival from below Bonneville Dam to Willapa Bay (which included the lower Columbia River, estuary, and plume) was 0.78

(SE = 0.19) for Snake River smolts and 0.77 (SE = 0.18) for Yakima River smolts.

In 2008, following the installation of the Astoria subarray, we were able to partition survival between the lower Columbia River and estuary (LRE) and the plume. We found that survival in the LRE was consistently very high and ranged between 0.82 and 1.0 for both populations in 2008 and 2009. Survival in the plume during those years ranged between 0.34 and 0.48 for both populations. This was surprisingly low, given the short migration distance of only 63 km between subarrays and given that joint survival in the LRE and plume was substantially higher in 2006, at 0.77 and 0.78 for the two populations, indicating that plume survival must have been much higher in 2006. Thus, we observed substantial interannual variability in plume survival and strong covariation between populations.

We also observed interannual variability and covariation in estimated survival during the 485-km, 1-mo-long migration beyond the plume in the coastal ocean to Lippy Point, BC, Canada. In 2006, a year of poor to intermediate ocean conditions (34), coastal ocean survival was lowest for both populations (only 0.04 for Snake River smolts and 0.02 for Yakima River smolts). In 2008, a year of much improved ocean conditions, coastal survival was an order of magnitude higher for both populations (0.29 and 0.30). In 2009, when ocean conditions were intermediate, coastal survival estimates were intermediate as well (0.12 and 0.04).

Accordingly, when all migration segments in the area of comigration are taken together, cumulative survival for both populations from Lake Wallula to Lippy Point covaried (Fig. 3). In 2006, cumulative survival ranged between 0.01 and 0.02. With improved ocean conditions, cumulative survival increased to 0.07 for both populations in 2008 and then declined in 2009, to 0.01–0.03.

After approximately 2 mo in the ocean, several smolts were detected on the acoustic subarray in Alaska; however the low numbers detected on this subarray (>1,000 km north of Lippy Point) prevented us from estimating survival to this location (*Materials and Methods*). The estimated detection probabilities, p , of other subarrays are presented in Table S2.

Model selection results indicated that in individual years, there was little to no support for the delayed mortality (DM) model in which survival was parameterized separately in each of the post-Bonneville Dam migration segments (Table 2). The common model, which estimated survival in each migration segment for both populations combined, was the highest-ranked model and had higher Akaike's Information Criteria (AIC) weights in all years. The ΔAIC_c scores of the DM model ranged between 0.8 and 3.9, and ΔAIC_c scores of the base model ranged between 2.2

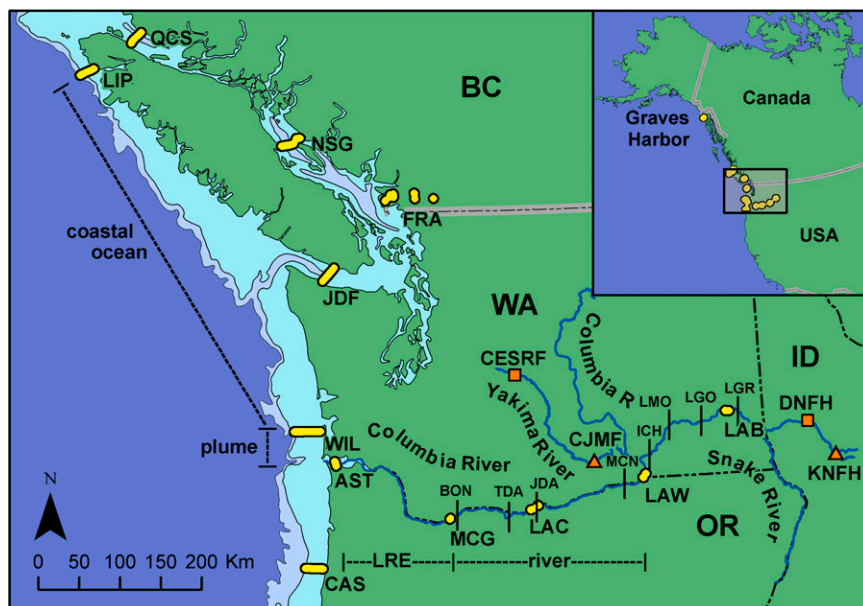


Fig. 1. Study area with acoustic tracking array (yellow dots and lines) and habitat designations. Hatcheries are represented by orange squares and release sites by orange triangles. Subarrays were deployed in Lake Bryan, Lake Wallula, Lake Celilo, McGowans Channel, Astoria, and Willapa Bay, WA; Lippy Point, BC, Canada; Cascade Head, OR; and Graves Harbor, AK. No smolts were detected on Pacific Ocean Shelf Tracking subarrays in the Juan de Fuca Strait, Northern Strait of Georgia, or Queen Charlotte Strait or on the Fraser River subarrays. Snake and lower Columbia River dams are indicated with vertical lines. Isobaths show the continental shelf edge at 200 and 500 m depth. AST, Astoria; BON, Bonneville; CAS, Cascade Head; CESRF, Cle Elum Supplementation and Research Facility; CJMF, Chandler Juvenile Monitoring Facility; DNFH, Dworshak National Fish Hatchery; FRA, Fraser River; ICH, Ice Harbor; JDA, John Day; JDF, Juan de Fuca Strait; KNFH, Kooskia NFH; LAB, Lake Bryan; LAC, Lake Celilo; LAW, Lake Wallula; LGO, Little Goose; LGR, Lower Granite; LIP, Lippy Point; LMO, Lower Monumental; MCG, McGowans Channel; MCN, McNary; NSG, Northern Strait of Georgia; QCS, Queen Charlotte Strait; TDA, The Dalles; WIL, Willapa Bay.

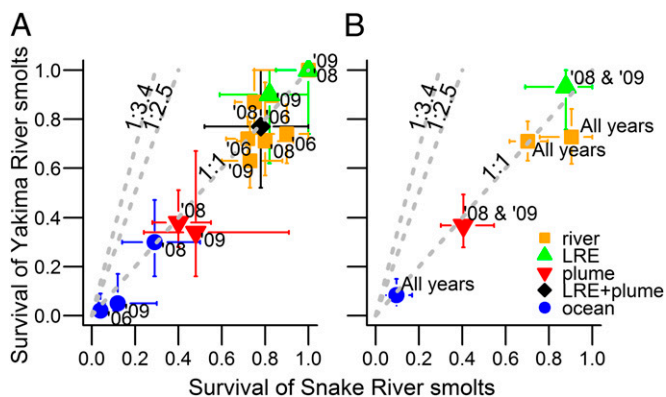


Fig. 2. Comparative survival of acoustic-tagged Snake River and Yakima River spring Chinook salmon smolts in each migration segment (A) in 2006, 2008, and 2009 and (B) in all years combined. The dashed 1:1 line represents equal survival of both treatment types; data points above the line indicate lower survival of Snake River fish. The 1:2.5 line indicates the survival disparity predicted by the delayed mortality hypothesis, using the ratio of Snake:Yakima adult return rates averaged over 2000–2009. The 1:3.4 line indicates the average survival disparity predicted over the years of our study. “River” estimates are from Lake Wallula to Lake Celilo and from Lake Celilo to McGowans Channel. The Astoria subarray was not deployed in 2006; therefore, LRE survival was combined with plume survival in that year. Error bars, 95% confidence intervals.

and 6.0. With all years combined, the weights of the three competing models were very similar; however, the common model still performed best. Thus, our data do not provide evidence that delayed mortality occurred in the estuary or coastal ocean in the first 5–6 wk after migrating out of the hydropower system, let alone the 3.4-fold increase in relative survival of the Yakima River population (Fig. 2).

Discussion

Before the initiation of this proof-of-concept acoustic telemetry project, the survival of Columbia River salmon smolts in estuarine and coastal ocean environments was the subject of intense speculation, but virtually no direct information was available. Hatchery-reared Yakima spring Chinook salmon smolts typically survive to return as adults at 2.5 times the rate of Dworshak National Fish Hatchery (NFH) smolts, and during the years of our study, they returned at 3.4 times the rate (15). If delayed mortality of Snake River smolts caused by stressful dam passage is expressed in the estuary or within the first month of life in the coastal ocean, we would expect to see reduced posthydropower survival of the Snake River population compared with smolts migrating from the Yakima River. Despite tracking size-matched groups with similar ocean entry timing as far as northern Vancouver Island, 750 km beyond the last dam, and for approximately 1 mo after ocean

entry, we did not observe lower survival for Snake River smolts. Thus, our results do not support the hypothesis that hydrosystem-induced stress leads to higher mortality of hatchery-reared Snake River spring Chinook salmon in the estuary and early marine period. If our results are accurate, the survival difference to adult return likely occurs sometime beyond the first month at sea and may not be hydrosystem-related. This is an important finding because mitigation efforts in the Columbia River basin, which are partially based on the assumption that “latent” effects of the dams in the ocean are large, may be ineffective if differential mortality occurs in the North Pacific Ocean for reasons unrelated to dam passage.

Several limitations remain on our finding that Snake River fish did not experience reduced mortality relative to the Yakima controls. All smolts in the study were grown to a larger size to accommodate the acoustic transmitters, and as a result, size at release was in the upper fraction of the untagged population (however, see Fig. S1, which illustrates how the smaller transmitter used in 2008 and 2009 enabled us to tag ~70% of the size distribution). Although there is evidence that larger smolt size may lead to higher SARs for hatchery Chinook (35), within the size range we tagged, survival was not a function of fork length in any year (36, 37). Furthermore, John Day River wild spring Chinook are among the smallest smolts at the onset of seaward migration, yet their return rates are among the highest (15, 38). Thus, it is unclear whether larger body size compensated for hydrosystem-induced stress.

The extra holding time also meant that timing of release was later than what is typical for both populations. Because migration timing may also play a role in determining SARs (39), later ocean entry timing might have either reduced survival prospects for both populations or differentially affected survival.

In all years, we attempted to match ocean entry timing and mean body size of the two populations. We did this successfully in 2008 and 2009; however, in 2006 there was some difference in ocean entry timing, with Snake River smolts arriving at Bonneville Dam 2–3 wk earlier than the Yakima River smolts (owing to high river flows). In addition, Yakima River smolts were larger on average than Snake River smolts in that year. Nevertheless, survival was similar for both populations in 2006 and was not a function of body size (36, 37).

We have some evidence that smolts may have migrated past the ocean subarrays undetected. Several of the tagged smolts that returned to the Columbia River as adults 2 y later (which were detected by passive integrated transponder tag detectors at the dams) were not detected as smolts on all of the ocean subarrays. Therefore, a few individuals may have migrated around the coastal ocean subarrays or swum undetected over subarrays or in locations where receivers were lost, or tag acoustic power may have degraded with time. Provided these factors affected both populations equally, the comparison of relative survival would remain unchanged. In addition, smolts from both populations were widely distributed across the Willapa Bay subarray (Fig. S2); however, because smolts appeared to be confined to the shelf at Lippy Point, our survival models account for any undetected or off-shelf migrant smolts at Willapa Bay, and thus

Table 1. Estimated survival (standard error) of acoustic-tagged Snake and Yakima River spring Chinook salmon smolts by habitat

Habitat	Migration segment	Snake River				Yakima River			
		2006	2008	2009	All years	2006	2008	2009	All years
Tributary	Release–LAW*	0.62 (0.04)	0.49 (0.03)	0.57 (0.03)	0.54 (0.02)	0.68 (0.03)	0.75 (0.02)	0.84 (0.02)	0.75 (0.02)
Mainstem	LAW–LAC	0.72 (0.05)	0.75 (0.05)	0.73 (0.07)	0.70 (0.04)	0.72 (0.05)	0.87 (0.07)	0.63 (0.06)	0.71 (0.04)
Mainstem	LAC–MCG	0.90 (0.08)	0.80 (0.07)	1 (0)	0.90 (0.08)	0.74 (0.06)	0.71 (0.07)	1 (0)	0.73 (0.06)
LRE + plume [†]	MCG–WIL	0.78 (0.19)	NA	NA	NA	0.77 (0.18)	NA	NA	NA
LRE	MCG–AST	NA	1 (0)	0.82 (0.15)	0.88 (0.1)	NA	1 (0.01)	0.90 (0.19)	0.93 (0.09)
Plume	AST–WIL	NA	0.40 (0.07)	0.48 (0.17)	0.41 (0.06)	NA	0.38 (0.06)	0.34 (0.13)	0.37 (0.05)
Coastal ocean	WIL–LIP	0.04 (0.03)	0.29 (0.09)	0.12 (0.06)	0.10 (0.03)	0.02 (0.02)	0.30 (0.08)	0.05 (0.04)	0.08 (0.03)

Counts of fish detected on each subarray are reported in Table S2. AST, Astoria, WA; LAC, Lake Celilo, WA; LAW, Lake Wallula, WA; LIP, Lippy Point, BC, Canada; MCG, McGowans Channel, WA; WIL, Willapa Bay, WA.

*Note that distance to Lake Wallula was ~3 times longer for Snake River smolts.

[†]We could not separate estuary and plume survival in 2006 because the Astoria subarray was not deployed that year.

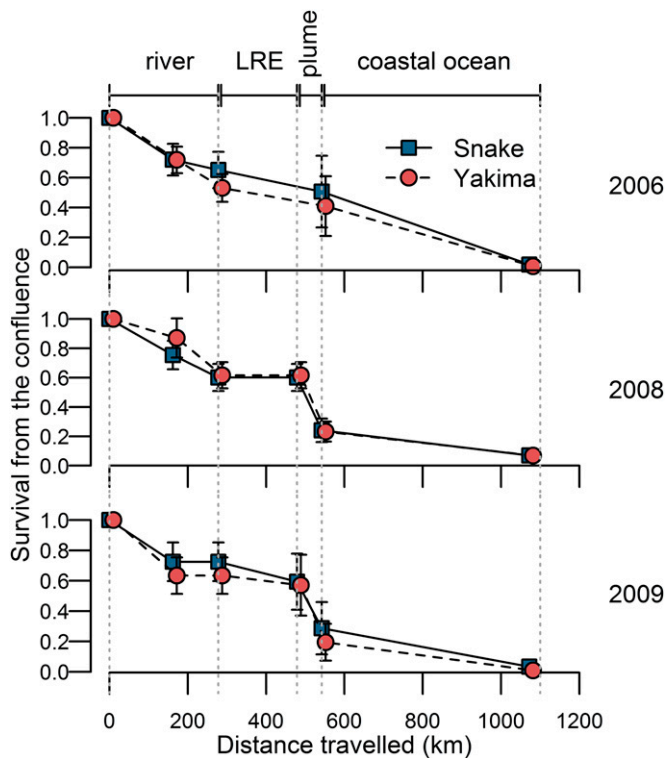


Fig. 3. Cumulative survival of Snake and Yakima River spring Chinook salmon smolts in the comigration pathway. Kilometer 0 is the location of the Lake Wallula subarray (below the confluence of the Snake, Yakima, and upper Columbia rivers). The Astoria subarray was not installed in 2006. Data points were adjusted to prevent overlap of 95% confidence intervals.

the survival estimates would not be affected. This statement holds true as long as the same proportion of both populations migrated around the Willapa Bay subarray (*SI Text*).

We have some concern that medium-term (>30 d) tag loss may be greater for the Yakima River population. Our studies of tagged smolts retained and held in freshwater tanks for up to several months at the release sites found that Yakima smolts had greater rates of transmitter expulsion (36). We also found,

however, that the effect of tag loss during the first 5–6 wk after release relative to natural mortality in the coastal ocean is likely negligible (*SI Text*).

Finally, other studies have demonstrated that some Columbia River yearling Chinook salmon smolts may migrate south on ocean entry. Coded wire-tagged and acoustic-tagged yearling spring Chinook salmon were recaptured (40) or detected (41) south of the river mouth when surface ocean currents were southerly; however, in the case of the coded wire-tagged fish, nearly all recaptures occurred to the north of the river mouth 1 mo later, indicating that northward migration soon occurs (acoustic-tagged fish could not be detected beyond the plume). This was further demonstrated by Trudel et al. (42): only 1.6% (1/64) of mid-Columbia River spring run smolts, 2.3% (3/132) of upper-Columbia River springs, and 0% (0/116) of Snake River spring-summer smolts were captured south of the Columbia River mouth along the Oregon shelf. In the present study, we deployed an additional subarray to test the assumption that smolts did not migrate south; none were detected.

If these factors differentially affect survival, the effect would have to be large enough to mask a 3.4-fold difference in apparent survival to Lippy Point (assuming that all delayed mortality caused by prior hydrosystem experience is expressed by the end of the first month at sea). As we found no survival difference within the comigration corridor, the difference likely develops farther north. This suggests either that hydrosystem-induced mortality of hatchery-origin Snake River spring Chinook is greatly delayed or that differences in the subsequent ocean life histories influence survival of these genetically distinct population groupings. It remains unclear whether smaller, wild smolts have similar survival as the smolts reported here, although recent advances in transmitter miniaturization mean that it is now feasible to repeat these experimental tests using wild smolts.

Very little stock-specific distribution information is available for Columbia River spring Chinook from the time they migrate north of British Columbia to the time they return to the Columbia River, a period of more than 1.5 y. In a synthesis of juvenile Chinook salmon coded wire-tagged recoveries from US and Canadian research surveys, Trudel et al. (42) provide distribution information for Dworshak NFH and Yakima River hatchery spring Chinook recaptured over a 12-y sampling period. Although few tagged fish were recovered (Dworshak, $n = 11$; Yakima, $n = 8$), their capture locations provide some insight into stock-specific differences in survival. Juveniles from both populations were captured between the Columbia River and central British Columbia; a Dworshak fish was captured as far north as central Alaska, but no Yakima River fish were captured in

Table 2. Model selection results for survival models investigating whether survival of Snake River spring Chinook salmon is lower than Yakima River spring Chinook salmon

Year	Name	Model*	QAICc [†]	ΔQAICc	QAICc weights	Model likelihood	Number of parameters	QDeviance
2006	Common	ϕ (gr:seg:trib + seg:WAL-LIP) p	1,914.5	0	0.54	1	15	1,884.3
	DM	ϕ (seg:river + gr:seg:LREO) p	1,915.8	1.3	0.28	0.53	16	1,883.6
	Base	ϕ (gr:seg) p	1,916.7	2.2	0.18	0.34	18	1,880.4
2008	Common	ϕ (gr:seg:trib + seg:WAL-LIP) p	4,036.6	0.0	0.84	1.00	20	3,996.2
	DM	ϕ (seg:river + gr:seg:LREO) p	4,040.5	3.9	0.12	0.14	22	3,996.1
	Base	ϕ (gr:seg) p	4,042.5	6.0	0.04	0.05	24	3,994.0
2009	Common	ϕ (gr:seg:trib + seg:WAL-LIP) p	3,853.4	0.0	0.55	1.00	20	3,813.0
	DM	ϕ (seg:river + gr:seg:LREO) p	3,854.1	0.8	0.37	0.68	22	3,809.8
	Base	ϕ (gr:seg) p	3,857.3	3.9	0.08	0.14	24	3,808.8
All	Common	ϕ (gr:seg:trib + seg:WAL-LIP) p	5,620.6	0.0	0.39	1.00	31	149.8
	DM	ϕ (seg:river + gr:seg:LREO) p	5,621.0	0.4	0.32	0.81	32	148.2
	Base	ϕ (gr:seg) p	5,621.2	0.6	0.28	0.73	34	144.4

ϕ , survival probability; AICc, Akaike's Information Criteria with low sample size; DM, delayed mortality model; gr, treatment group (population); LREO, lower river, estuary, and ocean; p , detection probability; Q, correction for overdispersion was made; river, river upstream of Bonneville Dam; seg, migration segment; trib, tributary; WAL-LIP, Lake Wallula, WA to Lippy Point, BC, Canada; All, all years combined. See *SI Materials and Methods* for model name descriptions.

*In all models, detection probability (p) was estimated identically (*Methods*).

[†]AICc is presented for 2008.

southeast or central Alaskan waters. This is consistent with our telemetry data, which show that only Dworshak fish were detected in southeast Alaska. Although both studies are based on few Alaskan observations, life history differences may lead to different ocean distributions, and thus potentially large differential survival rates.

There is evidence that increasing conservation actions and technological fixes within the Columbia River basin may not increase salmon population growth rates to sustainable levels. First, there is a significant correlation between ocean conditions that juvenile spring Chinook salmon encounter after ocean entry and the number of adults subsequently returning to the Columbia River (34, 43). For example, in 2005, ocean conditions were ranked lowest in a 14-y time series and the wild Snake River spring Chinook SAR from that outmigration year was also lowest, whereas in 2008, ocean conditions were ranked highest and subsequent adult returns reached the conservation goal of 4% for the first time. Second, our early marine survival estimates also correlate with ocean conditions: In 2008, smolt survival was an order of magnitude greater than in 2006, and 2009 was intermediate, consistent with mean rank scores of ocean conditions. Finally, modeling exercises demonstrated that even if hydrosystem survival were 100%, population growth rates would continue to decline unless reductions in first-year mortality, particularly early ocean and estuarine mortality, occurred (44).

Recent fluctuations and collapses of Chinook populations are not unique to the Columbia River basin. The collapse of the Sacramento River fall Chinook salmon run prompted complete closure of the California Chinook fishery in 2008 (45). Poor returns persisted for several years, but 2012 return rates are predicted to be some of the largest in decades, according to the Pacific Fishery Management Council. In British Columbia, west coast Vancouver Island Chinook populations are a stock of concern, and despite relatively pristine freshwater habitat and harvest reductions, the stock shows no sign of rebuilding (46). In 2012, the governor of Alaska requested disaster relief funds after severe restrictions or closures of Chinook salmon fisheries in the Yukon, Kuskokwim, and Kenai rivers, according to a State of Alaska news release. In all cases, marine survival was considered one of the most important factors leading to these declines. As our results indicate that the large difference in survival of hatchery-reared Snake and mid-Columbia River spring Chinook appears not to be caused by hydrosystem-induced delayed mortality, Columbia River salmon managers will need to recognize that the survival problem may be on a scale far larger than that of the Columbia River basin. Similar findings have also been reported for sockeye salmon, with large and persistent differences in long-term productivity of populations from even nearby river systems (47). Given the possibility of persistent differences in salmon production, managers may need to adopt a more pragmatic view of what level of technical "fix" to compensate for poor ocean conditions is both appropriate and possible within the Columbia River basin.

Materials and Methods

Populations Studied. The Snake River population of spring Chinook salmon used in this study was reared at the Dworshak NFH on the Clearwater River (a tributary of the Snake River); however, for logistical purposes we transferred smolts to Kooskia NFH for tagging (*SI Materials and Methods*). For the juvenile migration years used in this study, the geometric mean SAR_{Dworshak} was 0.78 (2006, 0.68; 2008, 1.33; and 2009, 0.52), which is slightly higher than the average over the last decade (from 2000 to 2010, the geometric mean SAR was 0.66%) (15). This population migrates through eight dams before reaching the Columbia River estuary, and distance from release to the Columbia River mouth was 870 km (Fig. 1).

The Yakima River population was reared at the Cle Elum Supplementation and Research Facility on the upper Yakima River and is part of the mid-Columbia evolutionarily significant unit (ESU). Smolts were released from Cle Elum Supplementation and Research Facility acclimation sites and then collected from the lower Yakima River at the Chandler Juvenile Monitoring Facility in Prosser, WA, 194–249 km downstream of the acclimation sites, and held for tagging. We collected fish at the Chandler Juvenile Monitoring Facility to maximize our sample size, as mortality in the Yakima River has been as high as 80% in recent years (48). For the juvenile migration years used in this study, the geometric mean SAR_{Yakima} was 2.62 (2006, 1.65; 2008,

4.98; and 2009, 2.23; 3.4 times the Dworshak SAR), which is considerably higher than the average over the last decade (from 2000 to 2010, the geometric mean SAR was 1.6%). This population migrates through four dams, and the distance to the Columbia River mouth from release was 615 km.

Tagged Dworshak smolts were released from the Kooskia NFH 2–4 wk earlier than Yakima smolts to allow time for them to migrate the additional 350 km and through the four Snake River dams so that timing of ocean entry (and presumably ocean conditions) would be similar. The comigration corridor extended from the confluence of the Columbia and Snake rivers to northwestern Vancouver Island, a distance of nearly 1,100 km.

Tag Specifications and Surgical Protocol. All work involving live fish met the standards laid out by the Canadian Council on Animal Care and was annually reviewed and approved by the Animal Care Committee of Vancouver Island University, Nanaimo, BC, Canada (applications 2006–08R, 2006–08R-2, and 2009–11R).

In each year of the study, we surgically implanted nearly 800 yearling Chinook salmon smolts with individually identifiable 69-kHz acoustic transmitters (VEMCO, Amirix System Inc.; Table 3). We attempted to size-match tagged fish within and between treatment groups in each year, although there was some variation in 2006 (Table 3). More details are provided in *SI Materials and Methods* and ref. 36.

Acoustic Array Elements and Location. The array design allowed us to track the smolts for 2,500 km from the release site in the Snake River through the hydrosystem, LRE, plume, and coastal ocean to Graves Harbor, Alaska, although our study focuses on the comigration area between Lake Wallula and Lippy Point. See Fig. 1 and *SI Materials and Methods* for array details.

Survival Estimation. For each year of the study, detection histories for each tagged individual were formed and estimates of survival and detection probability and their associated SEs were calculated for each population, using a model that was a special case of the Cormack-Jolly-Seber model for live-recaptured animals implemented with Program MARK (49). We then estimated survival across all 3 y of the study where possible (see *SI Materials and Methods* for model details).

The detection probability, p , of the Lippy Point (northwest Vancouver Island) subarray was not estimable using standard Cormack-Jolly-Seber methods because too few tagged smolts were detected in Alaska each year ($n_{2006} = 2$ Snake; $n_{2008} = 1$ Snake; $n_{2009} = 0$) to provide adequate information regarding the performance of the Lippy Point subarray; therefore, we assumed the p of the Lippy Point subarray was 0.90 for the V9 (VEMCO) tag used in 2006 and 0.67 in 2008 and 2009, when the less-

Table 3. Tagging summary for Snake and Yakima River spring Chinook salmon smolts

Population	Release date	n^*	Mean length (FL; range), mm	Tag burden (% mass) [†]	
2006	Snake	May 1	190	146.9 (140–208)	9.2 (2.6–11.5)
		May 8	190	145.6 (140–192)	9.4 (3.7–11.3)
	Yakima	May 30	199	154.5 (140–173)	7.3 (4.8–10.3)
		June 6	199	154.5 (140–168)	7.5 (5.2–10.8)
2008	Snake	April 25	197	146.2 (130–159)	4.4 (2.9–6.9)
		May 2	198	146.3 (131–159)	4.5 (3.0–6.7)
	Yakima	May 15	189	140.3 (129–158)	5.8 (3.9–7.3)
		May 21	189	140.4 (131–157)	5.8 (4.3–7.2)
2009	Snake	May 4	196	142.3 (130–162)	5.0 (2.9–7.3)
		May 11	196	142.4 (130–164)	4.9 (3.0–6.8)
	Yakima	May 18	199	141.3 (130–159)	5.7 (4.1–7.5)
		May 25	194	140.6 (130–159)	5.7 (4.2–6.9)

FL, fork length.

*All smolts were implanted with both acoustic and passive integrated transponder tags. In 2006, fish were tagged with V9-6L acoustic transmitters (9 × 21 mm, 3.1 g in air, 2 g in water). In 2008 and 2009, smolts were tagged with V7-2L acoustic transmitters (7 × 20 mm, 1.6 g in air, 0.75 g in water).

[†]Percentage tag burden was calculated as tag mass in air divided by fish mass in air.

powerful V7 (VEMCO) tag was used. We evaluated whether relative survival of the two populations was sensitive to assumptions of p at Lippy Point. We found that under several detection scenarios, the relative survival comparison was not affected (Fig. S3; see *SI Materials and Methods* for additional model assumptions).

Strength of Evidence for Delayed Mortality. To evaluate the strength of evidence for delayed mortality of the Snake River spring Chinook salmon population relative to the Yakima River population, we used Akaike's Information Criteria to compare the performance of three competing survival models (Table 2; *SI Materials and Methods*).

- Dynesius M, Nilsson C (1994) Fragmentation and flow regulation of river systems in the northern third of the world. *Science* 266(5186):753–762.
- Chapman DW (1986) Salmon and steelhead abundance in the Columbia River in the 19th-century. *Trans Am Fish Soc* 115(5):662–670.
- Ward DL, Boyce RR, Young FR, Olney FE (1997) A review and assessment of transportation studies for juvenile Chinook salmon in the Snake River. *N Am J Fish Manage* 17(3):652–662.
- Mantua NJ, Hare SR, Zhang Y, Wallace JM, Francis RC (1997) A Pacific interdecadal climate oscillation with impacts on salmon production. *Bull Am Meteorol Soc* 78(6):1069–1079.
- Raymond HL (1979) Effects of dams and impoundments on migrations of juvenile Chinook salmon and steelhead from the Snake River, 1966 to 1975. *Trans Am Fish Soc* 108(6):505–529.
- Schaller HA, Petrosky CE, Langness OP (1999) Contrasting patterns of productivity and survival rates for stream-type Chinook salmon (*Oncorhynchus tshawytscha*) populations of the Snake and Columbia rivers. *Can J Fish Aquat Sci* 56(6):1031–1045.
- Raymond HL (1988) Effects of hydroelectric development and fisheries enhancement on spring and summer Chinook salmon and steelhead in the Columbia River basin. *N Am J Fish Manage* 8(1):1–24.
- Hare SR, Mantua NJ, Francis RC (1999) Inverse production regimes: Alaska and West Coast Pacific salmon. *Fisheries (Bethesda, Md)* 24(1):6–14.
- BPA (2010) *Bonneville Power Administration annual report, DOE/BP-4224* (Bonneville Power Administration, Portland, OR).
- Ferguson JW, et al. (2007) Bypass system modification at Bonneville Dam on the Columbia River improved the survival of juvenile salmon. *Trans Am Fish Soc* 136(6):1487–1510.
- Muir WD, Smith SG, Williams JG, Hockersmith EE, Skalski JR (2001) Survival estimates for migrant yearling Chinook salmon and steelhead tagged with passive integrated transponders in the lower Snake and lower Columbia rivers, 1993–1998. *N Am J Fish Manage* 21(2):269–282.
- Williams JG, Smith SG, Muir WD (2001) Survival estimates for downstream migrant yearling juvenile salmonids through the Snake and Columbia rivers hydropower system, 1966–1980 and 1993–1999. *N Am J Fish Manage* 21(2):310–317.
- Faulkner JR, Smith SG, Muir WD, Marsh DM, Zabel RW (2011) *Survival estimates for the passage of spring-migrating juvenile salmonids through Snake and Columbia River dams and reservoirs, 2011* (Bonneville Power Administration, Portland, OR).
- Welch DW, et al. (2008) Survival of migrating salmon smolts in large rivers with and without dams. *PLoS Biol* 6(10):e265.
- Tuomikoski J, et al. (2012) *Comparative survival study (CSS) of PIT-tagged spring/summer Chinook and PIT-tagged summer steelhead, 2012 annual report* (Bonneville Power Administration, Portland, OR).
- NPCC (2009) *Columbia River Basin Fish and Wildlife Program, Council Document 2009-09* (Northwest Power and Conservation Council, Portland, OR).
- Deriso RB, Marmorek DR, Parnell JJ (2001) Retrospective patterns of differential mortality and common year-effects experienced by spring and summer Chinook salmon (*Oncorhynchus tshawytscha*) of the Columbia River. *Can J Fish Aquat Sci* 58(12):2419–2430.
- Budy P, Thiede GP, Bouwes N, Petrosky CE, Schaller H (2002) Evidence linking delayed mortality of Snake River salmon to their earlier hydrosystem experience. *N Am J Fish Manage* 22(1):35–51.
- Levin PS (2003) Regional differences in responses of Chinook salmon populations to large-scale climatic patterns. *J Biogeogr* 30(5):711–717.
- Tucker S, et al. (2012) Annual coastal migration of juvenile Chinook salmon: Static stock-specific patterns in a highly dynamic ocean. *Mar Ecol Prog Ser* 449:245–262.
- Weitkamp LA (2010) Marine Distributions of Chinook Salmon from the West Coast of North America Determined by Coded Wire Tag Recoveries. *Trans Am Fish Soc* 139(1):147–170.
- Schaller HA, Petrosky CE (2007) Assessing hydrosystem influence on delayed mortality of Snake River stream-type Chinook salmon. *N Am J Fish Manage* 27(3):810–824.
- Petrosky C, Schaller H (2010) Influence of river conditions during seaward migration and ocean conditions on survival rates of Snake River Chinook salmon and steelhead. *Ecol Freshwat Fish* 19(4):520–536.
- Haeseker SL, McCann JA, Tuomikoski J, Chockley B (2012) Assessing freshwater and marine environmental influences on life-stage-specific survival rates of Snake River spring-summer Chinook salmon and steelhead. *Trans Am Fish Soc* 141(1):121–138.
- Clemens BJ, et al. (2009) Effects of transportation and other factors on survival estimates of juvenile salmonids in the unimpounded lower Columbia River. *Trans Am Fish Soc* 138(1):169–188.
- McMichael GA, et al. (2010) The Juvenile Salmon Acoustic Telemetry System: A new tool. *Fisheries (Bethesda, Md)* 35(1):9–22.
- Perry RW, et al. (2010) Estimating survival and migration route probabilities of juvenile Chinook salmon in the Sacramento-San Joaquin River Delta. *N Am J Fish Manage* 30(1):142–156.
- Rechisky EL, Welch DW, Porter AD, Jacobs MC, Ladouceur A (2009) Experimental measurement of hydrosystem-induced delayed mortality in juvenile Columbia River spring Chinook salmon using a large-scale acoustic array. *Can J Fish Aquat Sci* 66:1019–1024.
- Melnychuk MC, Welch DW, Walters CJ, Christensen V (2007) Riverine and early ocean migration and mortality patterns of juvenile steelhead trout (*Oncorhynchus mykiss*) from the Cheakamus River, British Columbia. *Hydrobiologia* 582:55–65.
- Chittenden CM, et al. (2008) Riverine, estuarine and marine migratory behaviour and physiology of wild and hatchery-reared coho salmon *Oncorhynchus kisutch* (Walbaum) smolts descending the Campbell River, BC, Canada. *J Fish Biol* 72(3):614–628.
- Welch DW, et al. (2011) In situ measurement of coastal ocean movements and survival of juvenile Pacific salmon. *Proc Natl Acad Sci USA* 108(21):8708–8713.
- Rechisky EL, et al. (2012) Estuarine and early-marine survival of transported and in-river migrant Snake River spring Chinook salmon smolts. *Sci Rep* 2:448.
- Burnham KP, Anderson DR (2002) *Model selection and multimodel inference: A practical information-theoretic approach* (Springer, New York, NY).
- Peterson WT, et al. (2012) *Ocean Ecosystem Indicators of Salmon Marine Survival in the Northern California Current* 2012:79.
- Tipping JM (2011) Effect of juvenile length on Chinook salmon survivals at four hatcheries in Washington State. *N Am J Aquaculture* 73(2):164–167.
- Rechisky EL, Welch DW (2010) In *PNAMP Special Publication: Tagging, telemetry and marking measures for monitoring fish populations. A compendium of new and recent science for use in informing technique and decision modalities*, eds Wolf KS, O'Neal JS (Pacific Northwest Aquatic Monitoring Partnership Special Publication 2010-002. Available at www.pnamp.org/document/3635, Duvall, WA), pp 71–96.
- Porter AP, et al. (2011) *Marine and freshwater measurement of delayed and differential-delayed mortality of Columbia and Snake River yearling Chinook smolts using a continental-scale acoustic telemetry array, 2010* (Bonneville Power Administration, Portland, OR).
- DeHart KB, Tattam IA, Ruzicky JR, Carmichael RW (2012) *Productivity of spring Chinook Salmon and summer steelhead in the John Day River Basin* (Bonneville Power Administration, Portland, OR).
- Scheuerell MD, Zabel RW, Sandford BP (2009) Relating juvenile migration timing and survival to adulthood in two species of threatened Pacific salmon (*Oncorhynchus* spp.). *J Appl Ecol* 46(5):983–990.
- Fisher JP, Percy WG (1995) Distribution, migration, and growth of juvenile Chinook salmon, *Oncorhynchus tshawytscha*, off Oregon and Washington. *Fish Bull* 93(2):274–289.
- McMichael GA, et al. (2011) *Migratory behavior and survival of juvenile salmonids in the lower Columbia River, estuary, and plume in 2010, PNNL-20443* (Pacific Northwest National Laboratory, Richland, WA).
- Trudel M, et al. (2009) Distribution and migration of juvenile Chinook salmon derived from coded wire tag recoveries along the continental shelf of Western North America. *Trans Am Fish Soc* 138(6):1369–1391.
- Burke BJ, et al. (2013) Multivariate models of adult Pacific salmon returns. *PLoS ONE* 8(1):e54134.
- Kareiva P, Marvier M, McClure M (2000) Recovery and management options for spring/summer chinook salmon in the Columbia River basin. *Science* 290(5493):977–979.
- Lindley ST, et al. (2009) *What caused the Sacramento River fall Chinook stock collapse? NOAA-TM-NMFS-SWFSC-447* (US Dept of Commerce, National Oceanic and Atmospheric Administration, National Marine Fisheries Service, Southwest Fisheries Science Center, Fisheries Ecology Division, Silver Spring, MD).
- DFO (2012) *Assessment of west coast Vancouver Island Chinook and 2010 forecast, Can Sci Advis Sec Sci Advis Rep 2011/032* (Canada Dept of Fisheries and Oceans, Nanaimo, BC).
- Rogers LA, et al. (2013) Centennial-scale fluctuations and regional complexity characterize Pacific salmon population dynamics over the past five centuries. *Proc Natl Acad Sci USA* 110(5):1750–1755.
- Yakama Nation (2011) *Yakima/Klickitat Fisheries Project monitoring and evaluation for the performance period May 1, 2010 through April 30, 2011* (Bonneville Power Administration, Portland, OR).
- White GC, Burnham KP (1999) Program MARK: Survival estimation from populations of marked animals. *Bird Study* 46:120–139.



Nonrepresentative fish and ocean migration assumptions confound inferences in Rechisky et al.

Close examination of the methods, assumptions, and results of Rechisky et al. (1) indicate that their results are confounded by nonrepresentative tagging, rearing, and release factors, and that critical assumptions are inconsistent with available data. Thus, the authors' conclusions regarding hydro-system-related delayed mortality are overreaching and unsupported.

Nonrepresentative fish with acoustic tags were 10–20 mm longer, were released 21–83 d later, and were released 55–249 rkm further downriver than their corresponding hatchery populations of inference. Length at tagging, timing of release (2), and migration distance have all been shown to influence survival rates of Chinook salmon at multiple life stages. Any of these factors alone confound comparisons with the populations of inference, let alone the combination of all three.

Rechisky et al. (1) report that estimation of detection probabilities for the Lippy Point subarray was not possible because of too few detections of tagged smolts at the distant Alaska subarray. This assumption weakens the reliability of survival estimates used to draw conclusions concerning delayed mortality. The sensitivity analysis used to explore the effects of alternative assumptions is narrow in view of the large uncertainty in detection probability.

Rechisky et al. (1) assume that all fish migrated North on the continental shelf at

depths shallower than 200 m and through the Lippy Point subarray. If this assumption is not valid, the reported survival estimates will be biased low. Studies by McMichael et al. (3) and Schreck et al. (4) indicate that this assumption is likely violated. The degree of bias is unknown.

Contrary to Rechisky et al. (1), in-river survival varies between 25% and 83% and is influenced by hydrosystem conditions (2). Ocean survival rates and smolt-to-adult survival rates are also influenced by hydrosystem conditions (2, 5). These studies demonstrate that hydrosystem management actions influence survival at multiple life stages.

Rechisky et al. (1) found no evidence that Snake River hatchery Chinook smolts experienced lower survival rates in the early ocean than those from the Yakima River that migrated through fewer dams. The authors acknowledge these estimates represented tagged groups whose size, holding, and timing of release had been significantly manipulated to accommodate acoustic tags. As a result, tagged fish were not representative of the hatchery populations of inference. Similarly, the size-distribution of the hatchery study fish was larger than all but a small fraction of the wild individuals, concurrent with differences in migration timing between study fish and wild fish. The study was short term (3 y) and the migration conditions that study fish experienced were different from

migration conditions experienced by most wild and hatchery fish. Because of low sample sizes and poor detection efficiency, untested, critical assumptions about detection probabilities and ocean migration patterns were required. Thus, the findings of Rechisky et al. on delayed hydrosystem mortality for wild or hatchery fish are highly questionable.

Steven Haesecker¹

US Fish and Wildlife Service, Columbia River Fisheries Program Office, Vancouver, WA 98683

1 Rechisky EL, Welch DW, Porter AD, Jacobs-Scott MC, Winchell PM (2013) Influence of multiple dam passage on survival of juvenile Chinook salmon in the Columbia River estuary and coastal ocean. *Proc Natl Acad Sci USA* 110(17):6883–6888.

2 Haesecker SL, McCann JA, Tuomikoski J, Chockley B (2012) Assessing freshwater and marine environmental influences on life-stage-specific survival rates of Snake River spring-summer Chinook salmon and steelhead. *Trans Am Fish Soc* 141(1):121–138.

3 McMichael GA, et al. (2011) *Migratory Behavior and Survival of Juvenile Salmonids in the Lower Columbia River, Estuary, and Plume in 2010*, PNNL-20443 (Pacific Northwest National Laboratory, Richland, WA).

4 Schreck CB, Karnowski MD, Clemens BJ (2005) *Evaluation of Post-Release Losses and Barging Strategies that Minimize Post-Release Mortality*. DACW68-00-C-0028 (Oregon Cooperative Fish and Wildlife Research Unit, Corvallis, OR).

5 Petrosky CE, Schaller HA (2010) Influence of river conditions during seaward migration and ocean conditions on survival rates of Snake River Chinook salmon and steelhead. *Ecol Freshwat Fish* 19(4): 520–536.

Author contributions: S.H. analyzed data and wrote the paper.

The author declares no conflict of interest.

¹E-mail: steve_haesecker@fws.gov.



Reply to Haeseker: Value of controlled scientific experiments to resolve critical uncertainties regarding Snake River salmon survival

In our report (1), we set out to explicitly control for the ecological differences Haeseker (2) cites so that we could assess the effect of a critical policy issue: whether Snake River dam passage results in poorer early marine survival of juvenile Snake River spring Chinook salmon. Thus, we selected smolts of common size and manipulated release times to ensure smolts from the two populations were as similar as possible, apart from the number of dams that they passed (1). We agree with Haeseker that ecological differences between the populations used in our study existed and may have influenced ocean survival; however, their net effect needed to be a 3.4-fold difference in survival to result in the nearly identical rates of apparent survival that we found.

We have since repeated the experiment on salmon collected and tagged at Snake and Columbia River dams and compared their postrelease survival (3). The findings were consistent with the results reported in our article in PNAS (1): Snake River spring Chinook salmon ≥ 130 -mm fork length did not have lower survival relative to salmon originating elsewhere. (It is now technically possible to repeat these tests on smaller wild smolts if policy makers deem it sufficiently important).

Haeseker's (2) claim concerning the ocean distribution of salmon smolts is likely unfounded: long-term ocean surveys have consistently captured juvenile Columbia River spring Chinook almost exclusively on the continental shelf north of the Columbia River

(4). Furthermore, the cross-shelf distribution plots we report (figure S2 in ref. 1) demonstrate that both of the populations used in our study were shelf-limited at Lippy Point. The survival models we use thus accounted for individuals temporarily carried south or off-shelf in the Columbia River plume. Finally, because our study estimates relative survival, precise estimation of detection probability is not critical unless enough of the Yakima population migrated offshore to reduce the number detected to equal that of the Snake River smolts.

As Hilborn noted in his commentary on our report (5), no amount of data are likely to resolve the gulf between ecologists arguing for a major delayed effect of Columbia River dams on ocean survival and those who do not. Many in the Columbia River Basin blame poor ocean survival on prior exposure to dams in freshwater; however, Chinook populations from undammed areas in British Columbia and Alaska have declined in recent years as well (1). Psychological studies repeatedly show that individuals and like-minded groups preferentially select those facts favoring their prior prejudices when presented with complex data capable of multiple interpretations (6), such as those in the correlation analyses cited by Haeseker (2). Without carefully designed scientific experiments that test specific variables, it may not be possible to break out of this dilemma. In other scientific fields, formal experimental tests of theories historically resulted in very rapid scientific progress. The stakes are high in the Columbia

River region; the window for resolving the salmon conservation problem is likely closing fast, given the large predicted changes in future climate and poor ocean survival of salmon that will likely ensue.

Erin L. Rechisky¹, David W. Welch, and Aswea D. Porter

Kintama Research Services, Nanaimo, BC, Canada V9S 3B3

1 Rechisky EL, Welch DW, Porter AD, Jacobs-Scott MC, Winchell PM (2013) Influence of multiple dam passage on survival of juvenile Chinook salmon in the Columbia River estuary and coastal ocean. *Proc Natl Acad Sci USA* 110(17): 6883–6888.

2 Haeseker S (2013) Nonrepresentative fish and ocean migration assumptions confound inferences in Rechisky et al. *Proc Natl Acad Sci USA*, 10.1073/pnas.1309087110.

3 Porter AD, et al. (2012) Marine and freshwater measurement of delayed and differential-delayed mortality of Columbia & Snake River yearling Chinook smolts using a continental-scale acoustic-telemetry array, 2011. *Report to the Bonneville Power Administration by Kintama Research Services Ltd., Contract No. 46389, Project No. 2003-114-00*. Available at: <http://pisces.bpa.gov/release/documents/documentviewer.aspx?doc=P127340>.

4 Fisher J, et al. (2007) Comparisons of the coastal distributions and abundances of juvenile Pacific salmon from central California to the northern Gulf of Alaska. *American Fisheries Society Symposium 57: Ecology of Juvenile Salmon in the Northeast Pacific Ocean: Regional Comparisons*, eds Grimes C, Brodeur R, Halderson L, McKinnell SM (American Fisheries Society, Bethesda), pp 31–80.

5 Hilborn R (2013) Ocean and dam influences on salmon survival. *Proc Natl Acad Sci USA* 110(17):6618–6619.

6 Trivers R (2011) *The Folly of Fools: The Logic of Deceit and Self-Deception in Human Life* (Basic Books, New York), p 395.

Author contributions: E.L.R., D.W.W., and A.D.P. wrote the paper.

The authors declare no conflict of interest.

¹To whom correspondence should be addressed. E-mail: erin.rechisky@kintama.com.

Ocean and dam influences on salmon survival

Ray Hilborn¹

School of Aquatic and Fishery Sciences, University of Washington, Seattle, WA 98195

The Decline of Columbia River Chinook Salmon

The Columbia River in the Pacific Northwest has been the site of the world's most expensive effort in ecological management and restoration. Primarily using revenues from the hydroelectric system, roughly \$400 million have been spent annually on the fish and wildlife program in the Columbia Basin, most of it on salmon. Much of this funding goes to operate hatcheries and modify the operation of dams, but also to a research program that, over the last four decades, has funded thousands of scientists and supported a number of technical advances, including three tagging techniques that have revolutionized our ability to understand the freshwater and marine life of salmon.

One of these techniques is the use of acoustic tags on juvenile salmon. In PNAS, the article by Rechisky et al. (1) reports how these acoustic tags are used to measure survival of juvenile salmon in their early ocean life. The tags are implanted in thousands of juvenile salmon and arrays of acoustic listening devices detect their passage down the Columbia River and their northward ocean migration. Before the development of acoustic tags, the ocean was essentially a black box. Using earlier tagging techniques, individual fish were marked and nothing was known of them until they returned from the ocean, when the small stainless steel tags, known as coded wire tags, were either seen by physical inspection for a missing adipose fin, or passively interrogated tags were electronically detected at a range of a meter or two as the fish pass up fish ladders. The ocean distribution of fish could be inferred when coded wire tag-marked fish were caught, but the timing and location of ocean mortality remained unknown.

The decline of Columbia River salmon is a well-documented story of the conflict between industrial-scale human activity and wild resources (2). A combination of overharvesting, loss of habitat because of land-use changes and impassable dams, changes in ocean conditions, and dam construction, has led to a loss of most of the

once great migrations of wild salmon on the Columbia. The Columbia River was known for the largest runs in the world of the largest of the Pacific salmon, the Chinook or "king" salmon, and the "kings" are still a primary focus of restoration efforts.

The story of the Chinook salmon on the Columbia River can be told in two phases. At first, using catches as a measure, the development of industrial fishing brought about a substantial decline. Then the Grand Coulee Dam (1942) totally blocked the upper river to salmon migration, and the four mainstem dams (beginning with the Bonneville Dam in 1937) on the lower Columbia flooded considerable habitat and proved a significant barrier to both the upstream passage of adults and the downstream migration of juveniles despite the construction of fish ladders. By 1960, the Chinook salmon runs were less than 10% of what they had been a century earlier.

The second phase began in 1960. Four more dams were completed on the Snake River (between 1962 and 1972), resulting in another major decline in the runs of Chinook spawning in the headwaters of the Snake River. Thanks to the fish ladders that allow us to very reliably count the fish passing upstream, scientists were able to estimate the number of adult fish that return for each adult spawner (sometimes called recruits per spawner) and also the smolt-to-adult ratio that is a measure of the fraction of juveniles migrating downstream that survive both migration and life in the ocean to return. Both recruits per spawner and smolt-to-adult ratio declined dramatically in the late 1970s, coinciding with the completion of the four Snake River dams, to the point where, even though there was no harvest, stocks kept declining and appeared to be on a trajectory toward extinction (3). In 1992, the major stock of Chinook salmon spawning in the Snake River watershed was placed on the Endangered Species list.

Is it the dams?

Although considerable efforts have improved the downstream survival of juvenile salmon

and ocean conditions appear to be more favorable now, why is the survival rate of juvenile Chinook salmon from the Snake River still so much poorer than that of the Chinook from farther down the Columbia?

The most common assumption was that the passage past the dams was the culprit. However, the new tagging techniques, both passively interrogated tags and acoustic, let scientists estimate the passage mortality, and Welch et al. (4) showed, to the surprise of many, that the survival of Snake River juvenile salmon down the Snake and Columbia Rivers was comparable to survival of juvenile Chinook salmon down the Fraser River in Canada, where there are no dams. Therefore, if the dams are not killing the Snake River fish, why do they do so poorly?

It was also thought that the downstream passage through dams stresses the fish, which would reduce their survival in early ocean life. The present report (1) again uses the acoustic technology to measure survival through the first 485 km of ocean migration and finds no evidence for delayed mortality of Snake River Chinook compared with Yakima River Chinook that do not pass through the Snake River dams. The difference in survival between the Snake and Yakima Chinook must be found at a later point in their ocean life.

One question was clarified and gave rise to another: perhaps it is time to step back and look a bit more broadly. The comparison in downstream survival of Chinook in the Fraser and Columbia Rivers was both surprising and informative. However, there are other lessons for the Columbia River to be drawn from the Fraser River. Fraser River, and indeed most southern British Columbia Chinook salmon, declined dramatically in the 1970s and 1980s because of a combination of overharvesting and poor ocean survival (5). Survival of Canadian hatchery Chinook was measured by coded wire tags, and plummeted from as high as 5% in the mid-1970s to about 1% by the mid-1980s (6). As many have noted, there was an overall decline in survival of Chinook salmon during this period that coincided with

Author contributions: R.H. wrote the paper.

The author declares no conflict of interest.

See companion article 10.1073/pnas.1219910110.

¹E-mail: rayh@u.washington.edu.

a warming of the ocean and an increase in survival of Alaskan salmon (7, 8).

Even more interesting are the differences in survival of Chinook salmon upstream in the Fraser River and close to the ocean. In the 1970s Canada built a number of Chinook hatcheries, both near the ocean and the mouth of the Fraser as well as hatcheries much higher up in the river, comparable in travel distance to the Snake River Chinook on the Columbia (9). These upriver Fraser River Chinook hatcheries had abysmal survival. The Quesnel Hatchery, located 650 km up the Fraser River averaged barely 0.1% survival from 1981 to 1989. The Spius Creek hatchery, located 315 km up the Fraser averaged 0.5% survival over the same period. These numbers are far lower than survival of juvenile Chinook from hatcheries in Canada located at or near tidewater, which were up to 10-times higher. Although these survival data of Fraser River Chinook are derived from hatchery stocks, it is certainly suggestive that the pattern of declining ocean survival with distance up-stream may be a phenomenon found in places other than the Columbia River and may ultimately not be related to the hydro-electric system.

Rechisky et al. (1) are unique in having made a significant advance in measuring early ocean survival of upstream and downstream fish in the Columbia River. As the authors point out, some methodological questions are still unanswered: perhaps all of the salmon do not migrate north toward the acoustic detectors, and perhaps there remain some size-specific survival differences that cause bias because the smallest of the juvenile

salmon cannot be fitted with the acoustic tags. It is indeed one of the major concerns about the acoustic tagging that only larger fish

Rechisky et al. are unique in having made a significant advance in measuring early ocean survival of upstream and downstream fish in the Columbia River.

can be tagged. Although the authors have made a number of efforts to reduce this problem, the concern remains that the tagged fish may not be representative of the total population from the same location who are, on average, smaller than those tagged.

The importance of dams in the Columbia River has deeply divided the scientific com-

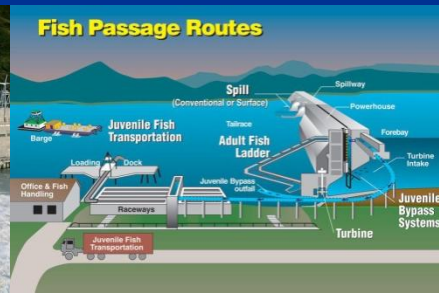
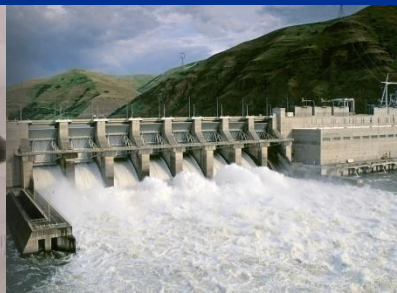
munity, with very reputable scientists on both sides of the debate. Those arguing that dams are the major problem with Snake River Chinook salmon will remain unconvinced by this study and the earlier work of Welch et al. (4). Extensive efforts to bring these two scientific communities together have proved unsuccessful, and by now it is hard for outside observers to see what kind of data will resolve the differences in perspective.

Overall, Chinook salmon are doing poorly throughout their range, from the Yukon River to the Sacramento. Although there are more salmon in the ocean now than any time in the past (10), the boom in salmon has been in pink, chum, and sockeye, while the freshwater river-rearing coho and Chinook have declined. It may be that with current ocean conditions many stocks of Chinook salmon cannot survive, and that the geographic range of Chinook may contract and the long-distance migrating Chinook of the southern rivers may not persist.

- 1 Rechisky EL, Welch DW, Porter AD, Jacobs-Scott MC, Winchell PM (2013) Influence of multiple dam passage on survival of juvenile Chinook salmon in the Columbia River estuary and coastal ocean. *Proc Natl Acad Sci USA*, 10.1073/pnas.1219910110.
- 2 Montgomery DR (2003) *King of Fish: The Thousand Year Run of Salmon* (Westview Press, Boulder, CO).
- 3 Kareiva P, Marvier M, McClure M (2000) Recovery and management options for spring/summer Chinook salmon in the Columbia River basin. *Science* 290(5493):977–979.
- 4 Welch DW, et al. (2008) Survival of migrating salmon smolts in large rivers with and without dams. *PLoS Biol* 6(10):e265.
- 5 Fraser FJ, Starr PJ, Fedorenko AY (1982) A review of the Chinook and coho salmon of the Fraser River, in *Canadian Technical Report of Fisheries and Aquatic Sciences* (Canadian Department of Fisheries and Oceans, Ottawa), p 129.

- 6 Coronado C, Hilborn R (1998) Spatial and temporal factors affecting survival in coho and fall Chinook salmon in the Pacific Northwest. *Bull Mar Sci* 62(2):409–425.
- 7 Francis RC, Hare SR (1994) Decadal-scale regime shifts in the large marine ecosystems of the North-east Pacific: A case for historical science. *Fish Oceanogr* 3(4):279–291.
- 8 Mantua NJ, Hare SR, Zhang Y, Wallace JM, Francis RC (1997) A Pacific interdecadal climate oscillation with impacts on salmon production. *Bull Am Meteorol Soc* 78(6):1069–1079.
- 9 Winton J, Hilborn R (1994) Lessons from supplementation of Chinook salmon in British Columbia. *N Am J Fish Manage* 14(1): 1–13.
- 10 Ruggerone GT, Peterman RM, Dorner B, Myers KW (2010) Magnitude and trends in abundance of hatchery and wild pink salmon, chum salmon, and sockeye salmon in the North Pacific Ocean. *Mar Coast Fish: Dyn Manag Ecosyst Sci* 2(1):306–328.

Influence of multiple dam passage on survival of juvenile Chinook salmon in the Columbia River estuary and coastal ocean (Proceedings of the U.S. National Academy of Sciences, 2013)

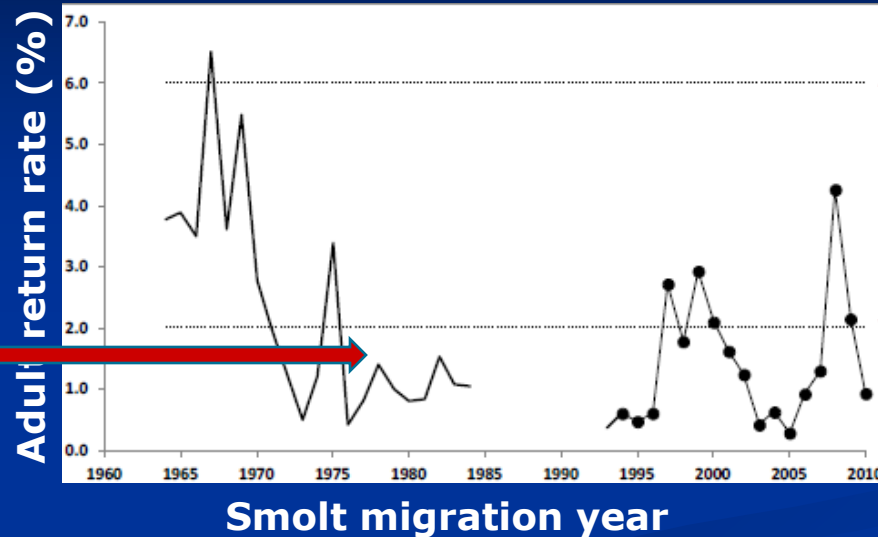


Erin Rechisky, David Welch & Aswea Porter
Kintama Research Services
Nanaimo, BC

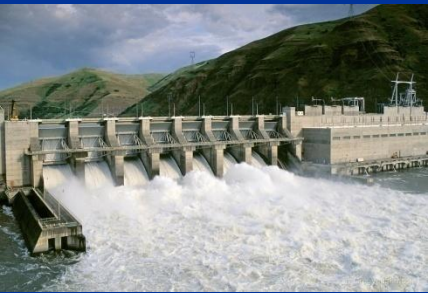
What is Delayed Mortality?

Return rates of Snake River spring Chinook declined after the completion of the Snake River dams in the 1970s

Wild Snake River Spring/summer Chinook*



Recovery target range (2-6%)



Spring Chinook from the mid-Columbia R have 3-4x higher return rates

- ❖ Does passage through the Snake River dams result in delayed mortality (hydro DM) in the estuary and ocean?



Snake River spring Chinook transported around the dams have marginally better return rates

- ❖ Does transportation via barge result in delayed mortality (transport DM)?

* Data from the Fish Passage Center Comparative Survival Reports

How can we test delayed mortality hypotheses?

1. Deploy a large-scale tracking array
2. Implant transmitters into smolts & release
3. Recover tracking data from the array
4. Use detections to estimate survival (CJS)
5. Compare survival estimates in the estuary and ocean (“*Below Bonneville Survival*”)



■ Snake River vs. mid-Columbia River Spring Chinook

Rechisky et al (2013) Proceedings of the National Academy of Sciences USA. doi: 10.1073/pnas.1219910110



■ Transported vs. In-River migrant Snake River Spring Chinook

*Rechisky et al (2012) Nature Scientific Reports, 2(448)
doi: 10.1038/srep00448*



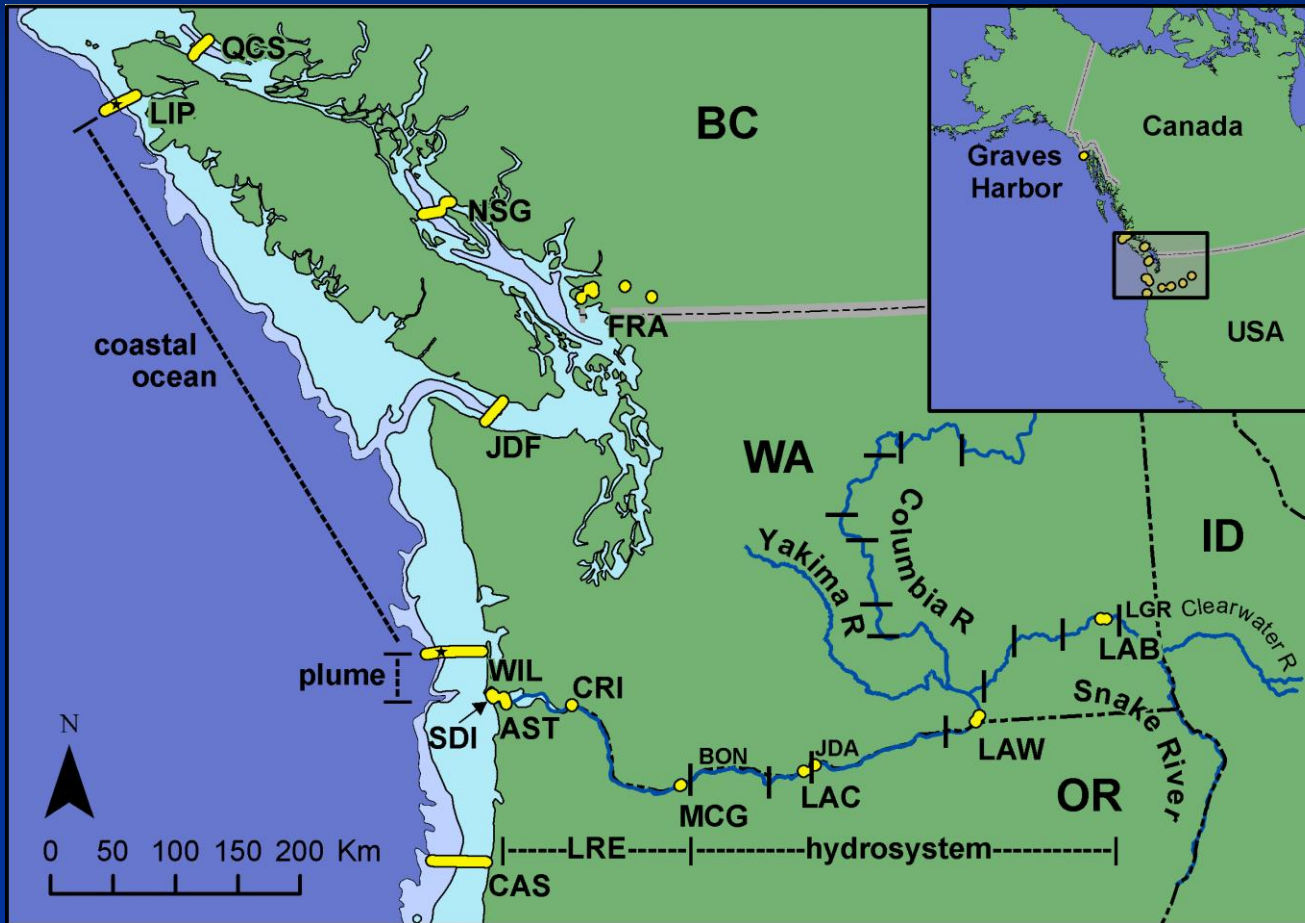
Study Design (2006-2011)





Credit: Vancouver Aquarium 2009. www.postcoml.org

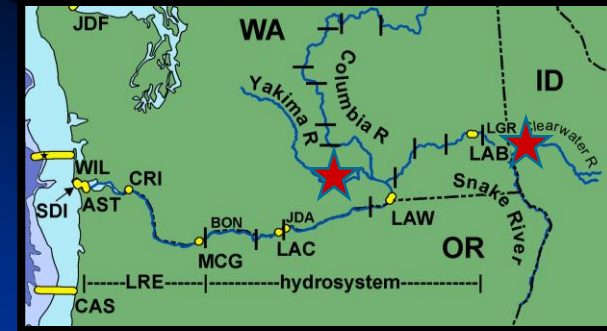
Map of the Array



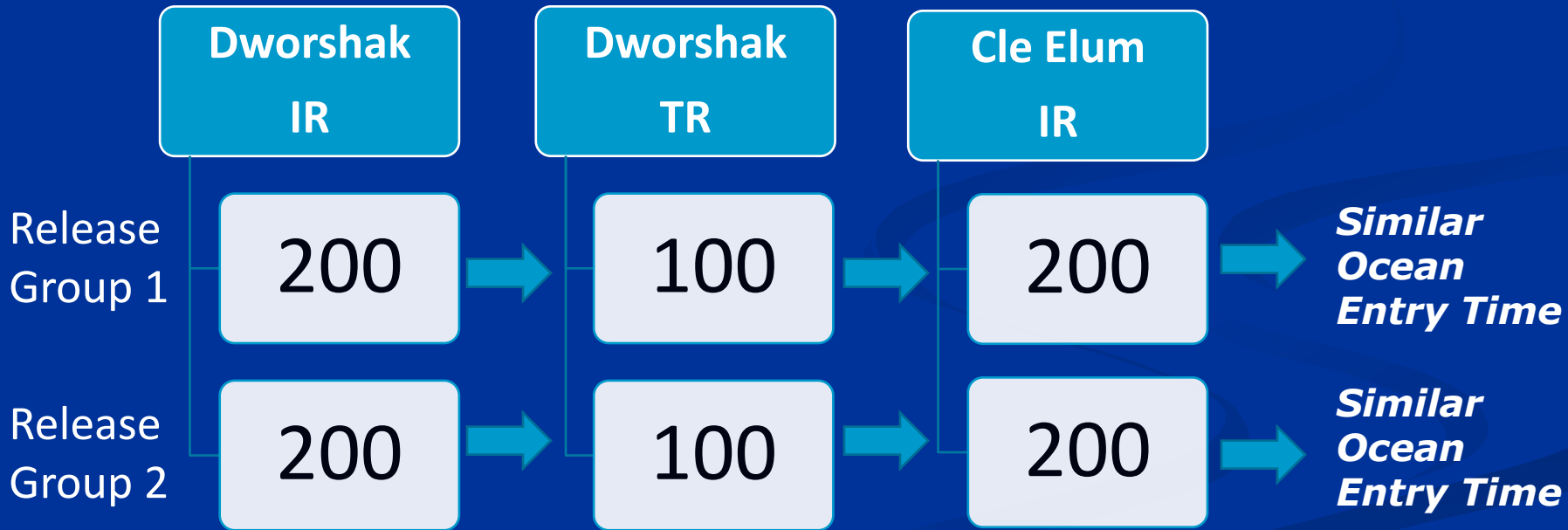
- Coastal ocean sub-arrays extended offshore to 200 -500 m depth
- Receivers were positioned mid-water

LAB= Lake Bryan
LAW= Lake Wallula
LAC= Lake Celilo
MCG= McGowans Channel
AST= Astoria Bridge
WIL= Willapa Bay
LIP= Lippy Point
CAS= Cascade Head

2006, 2008, 2009 Tagging

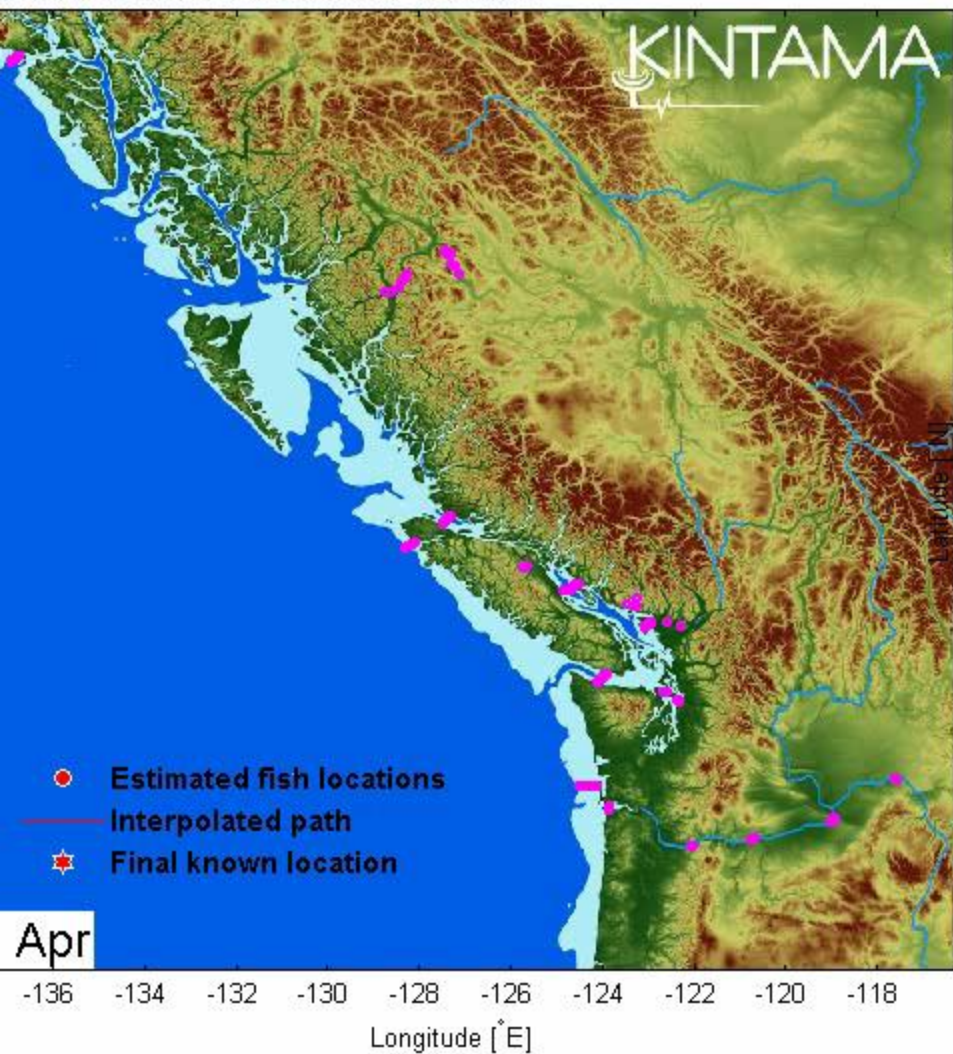


transport DM *hydro DM*

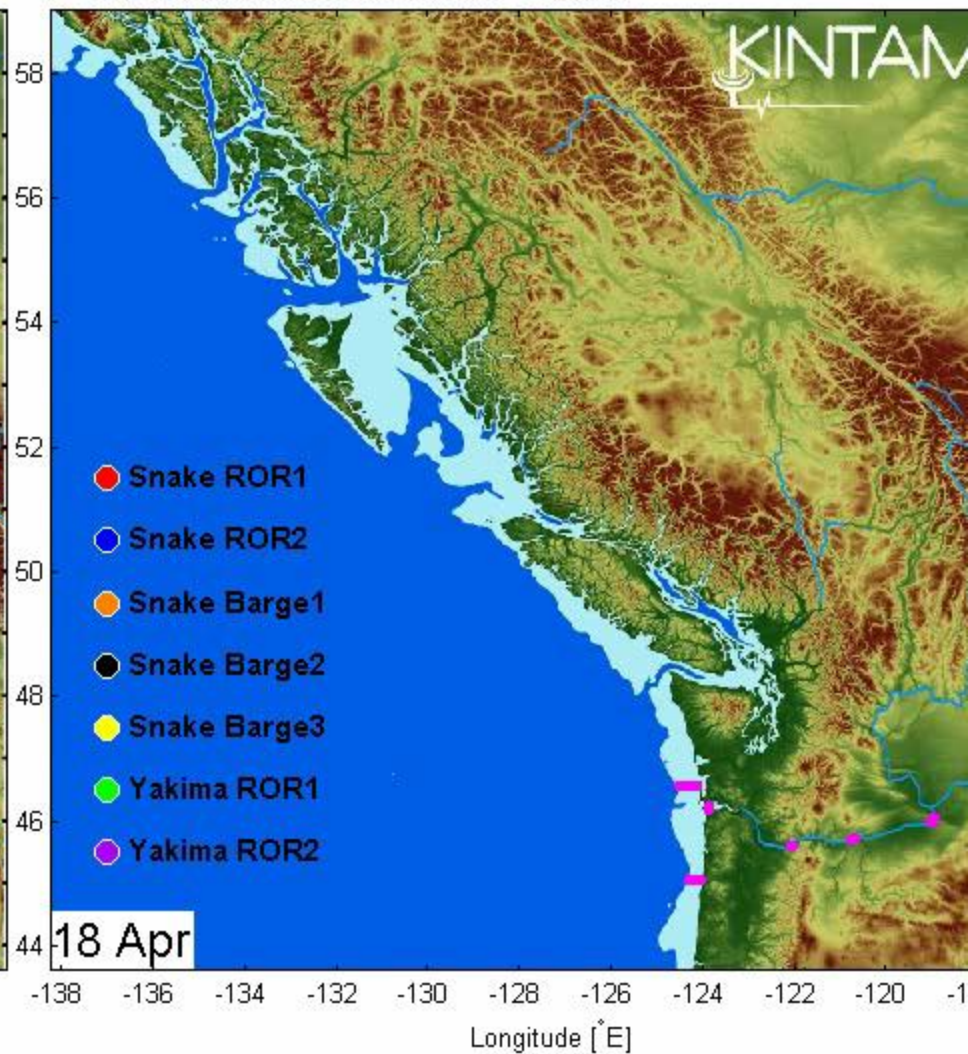


Visualization of Juvenile Migration in

GENERATION ARRAY - 2008



1st GENERATION ARRAY - 2009



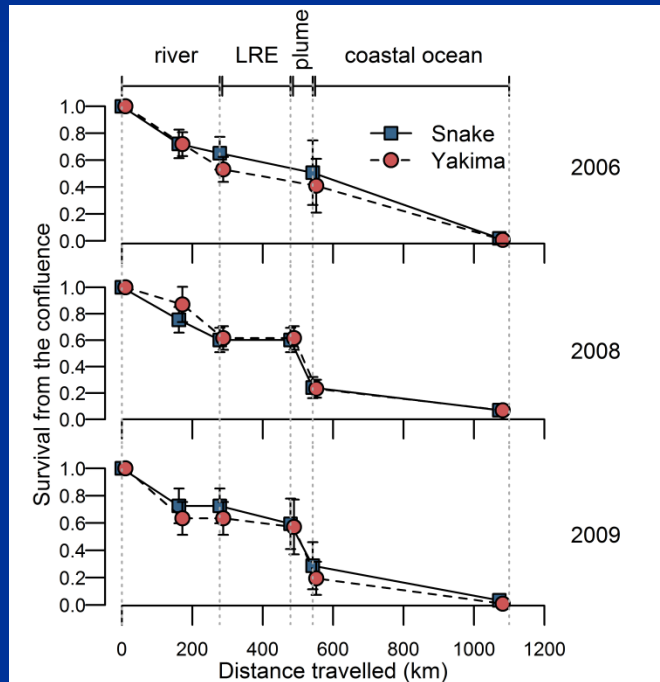
Longitude [°E]

Longitude [°E]

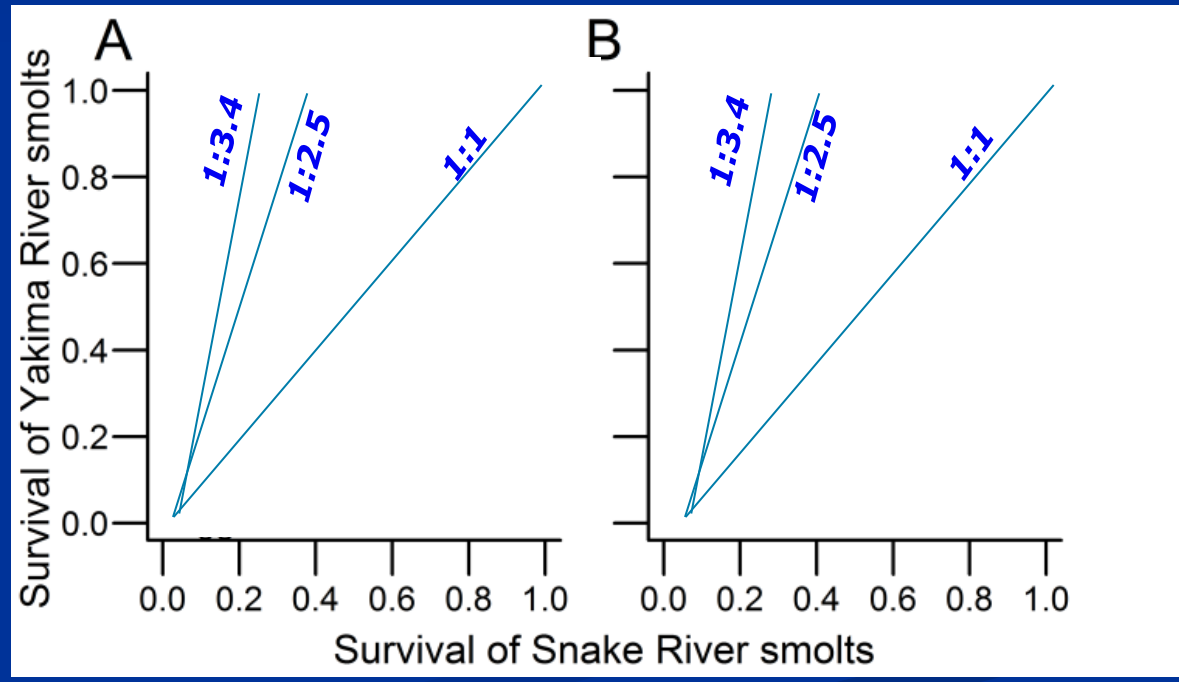
Results: Test of hydro DM 2006-2009*

Snake R (Dworshak) & Yakima (Cle Elum) spring Chinook

Post-Confluence cumulative survival



Relative survival

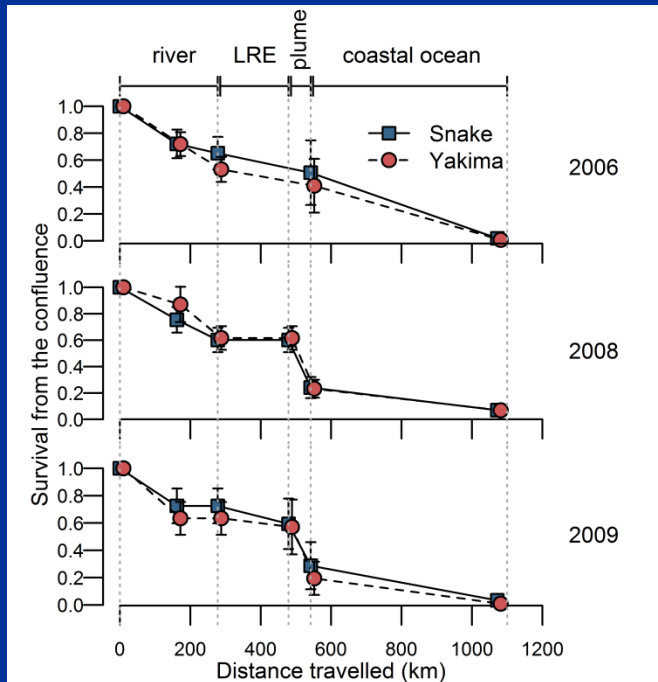


*Rechisky et al. (2013) Proceedings of the National Academy of Sciences.

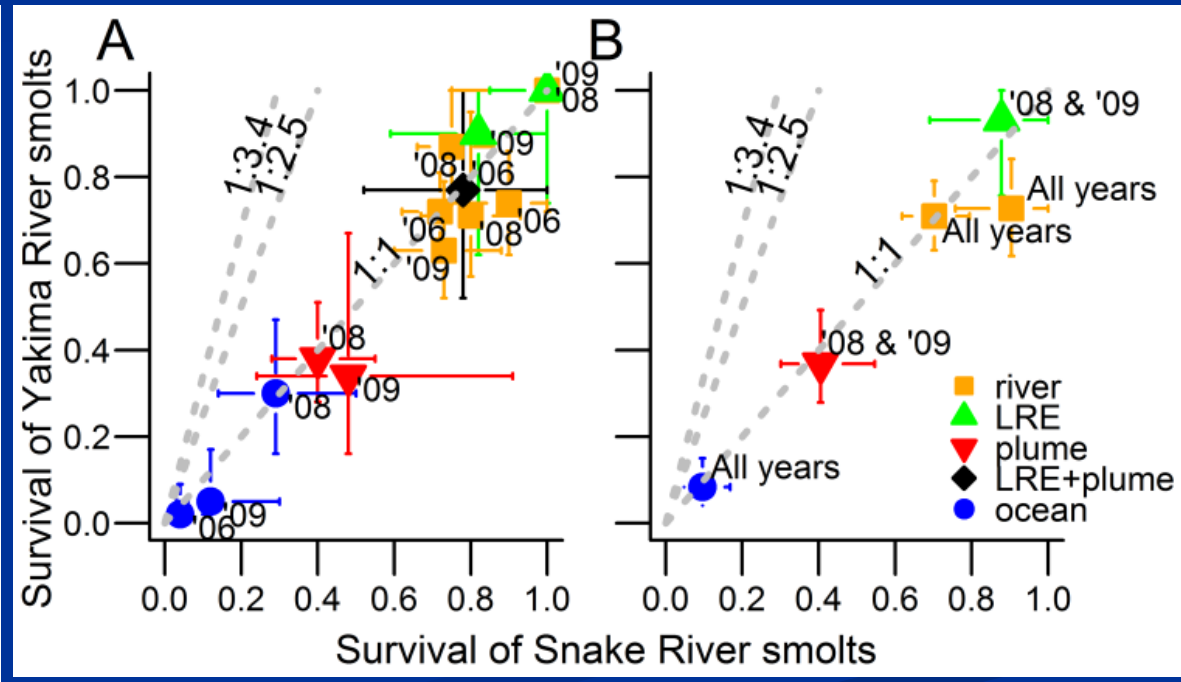
Results: Test of hydro DM 2006-2009*

Snake R (Dworshak) & Yakima (Cle Elum) spring Chinook

Post-Bonneville Dam cumulative survival



Relative survival

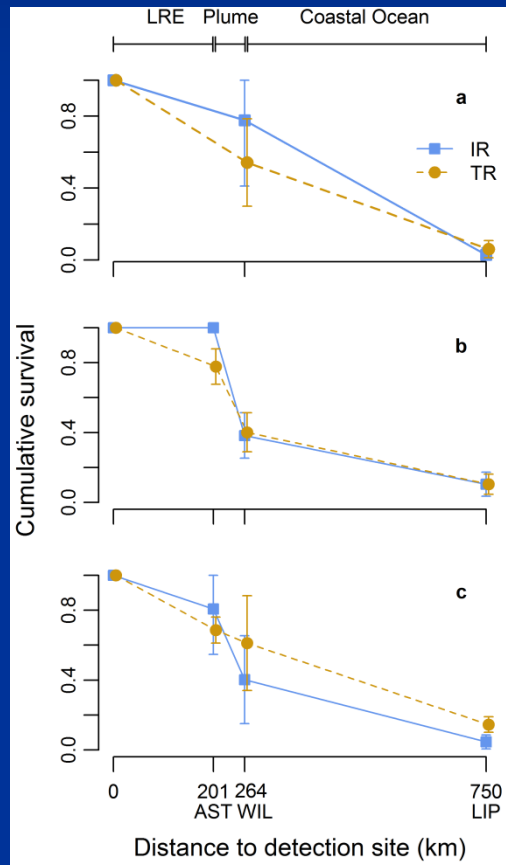


*Rechisky et al. (2013) Proceedings of the National Academy of Sciences.

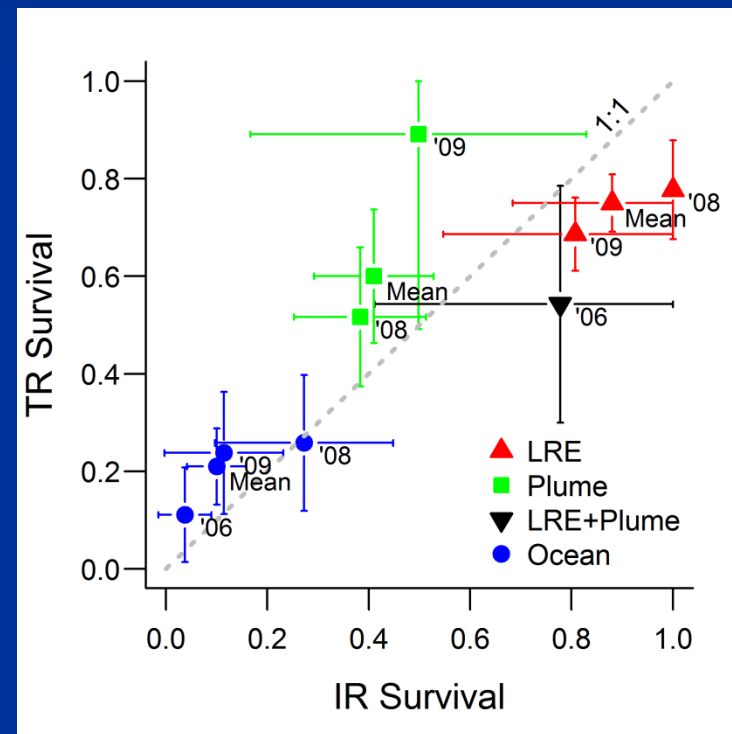
Results: Test of transport DM 2006-2009*

(Dworshak & Cle Elum spring Chinook)

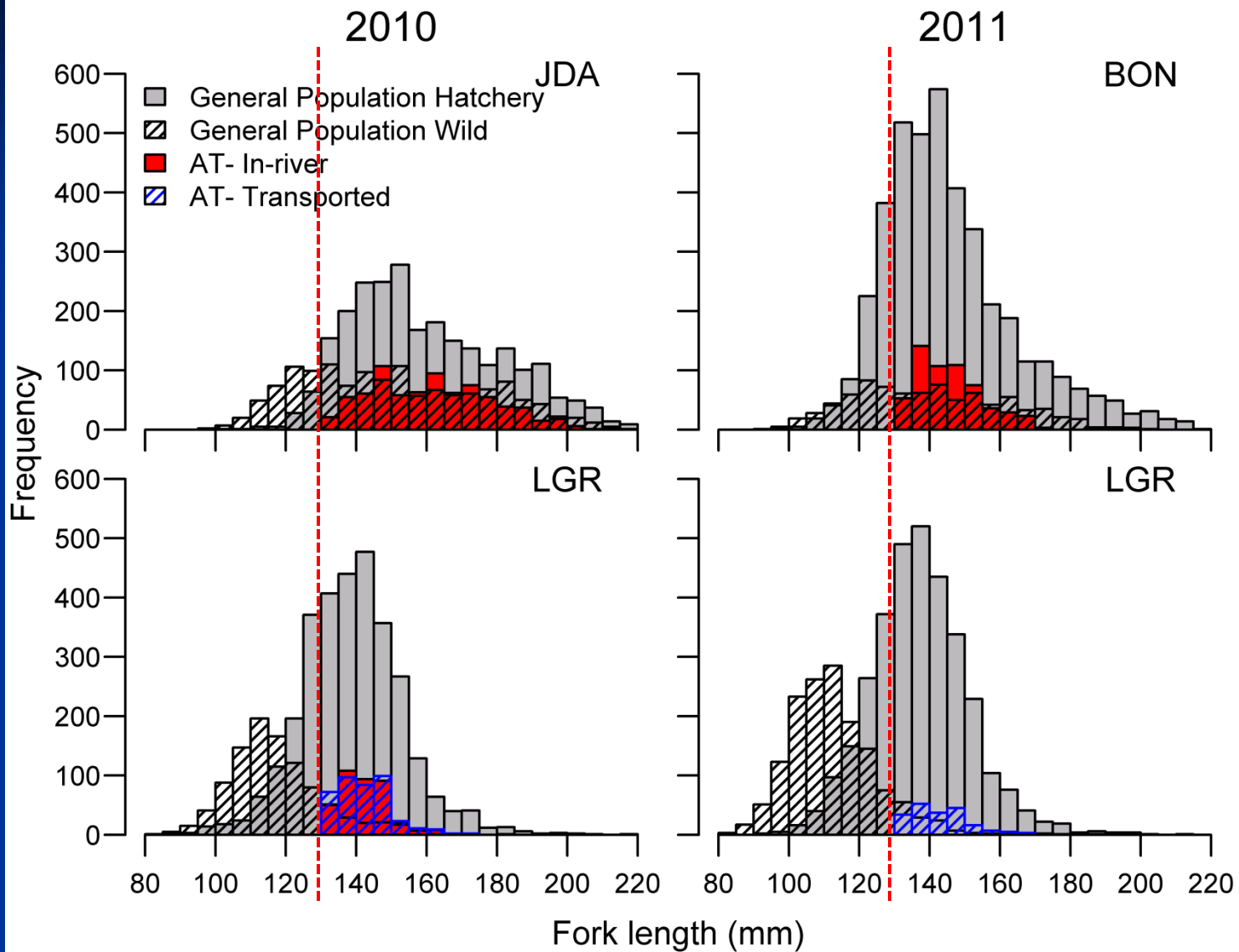
Post-Bonneville Dam cumulative survival



Relative survival



*Rechisky et al. (2012). Nature Scientific Reports 2:448.



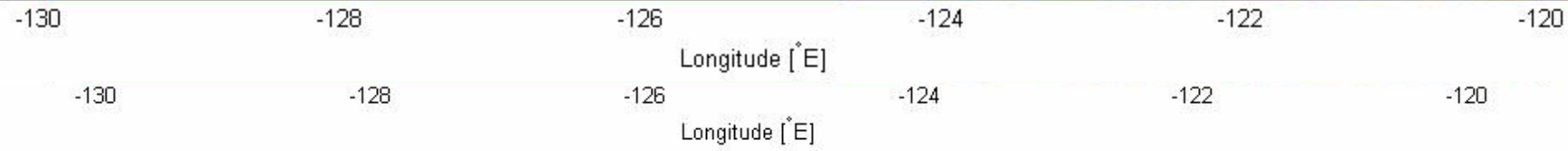
Visualization of Juvenile Migration

1st GENERATION ARRAY - 2011



- Upper Columbia ROR
- Mid Columbia ROR
- Snake BARGE
- Snake ROR
- Estimated fish locations
- Interpolated path
- ★ Final known location

22 Apr

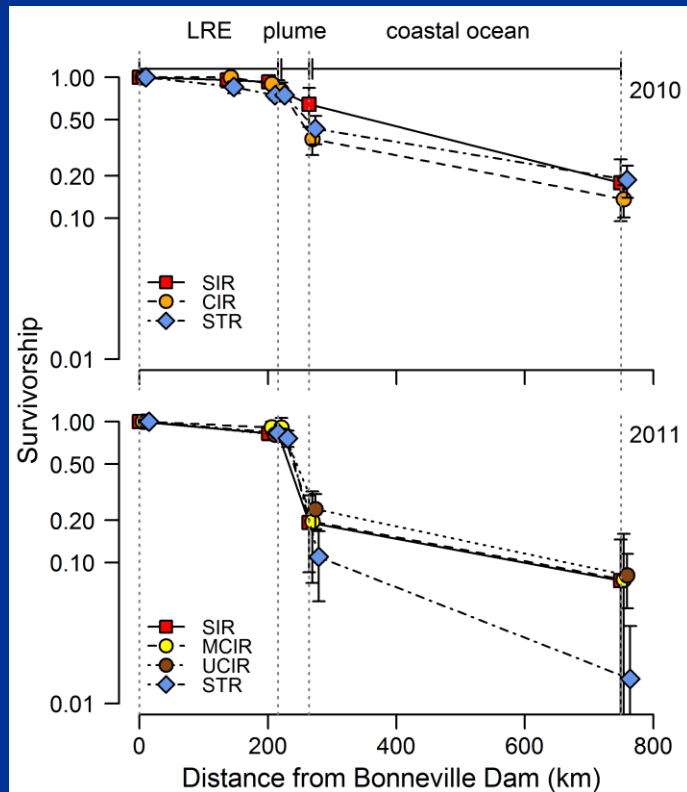


Results: Test of Hydrosystem Delayed

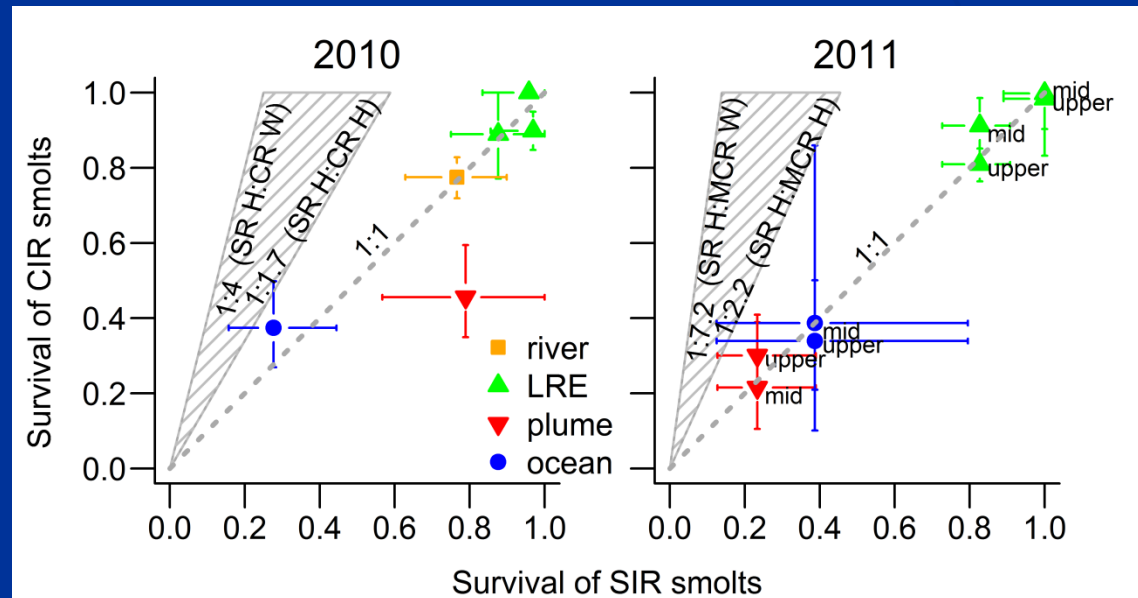
Mortality, 2010-2011*

(Snake & Columbia yearling Chinook collected at dams)

Post-Bonneville Dam cumulative survival



Relative survival

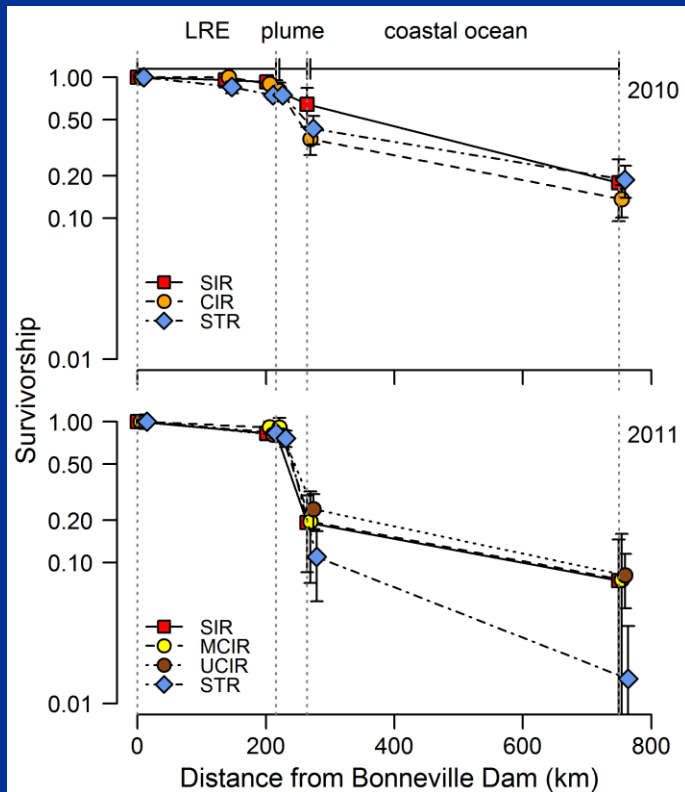


*Rechisky et al. (*In Press*). Marine Ecology Progress Series
(2011 work in collaboration with S. Narum and Jon Hess, CRITFC)

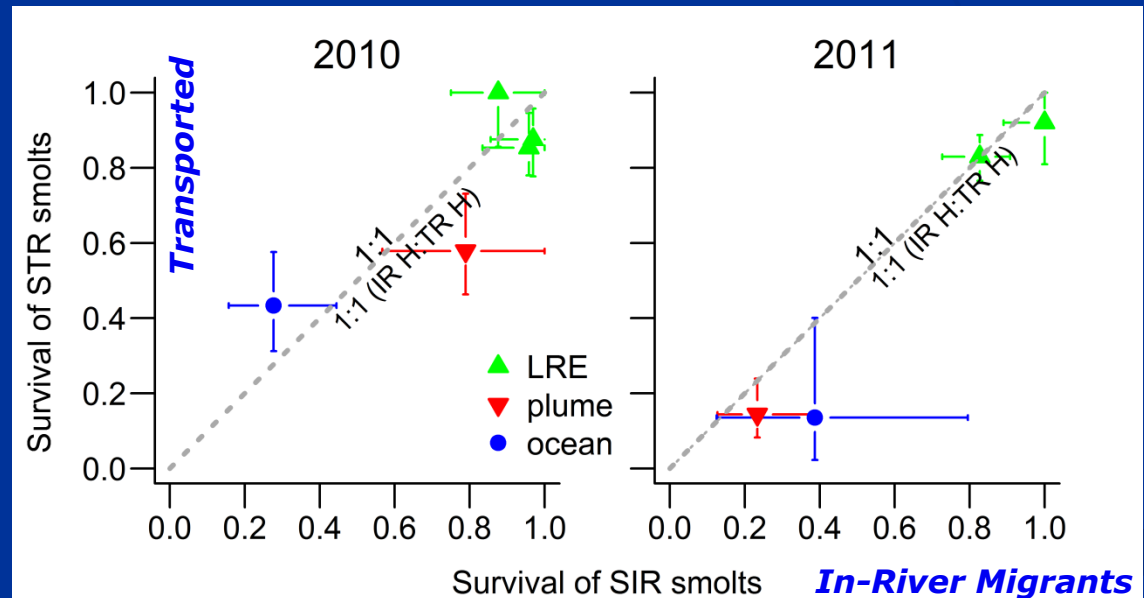
Results: Test of Transport Delayed Mortality, 2010-2011*

(Snake & Columbia yearling Chinook collected at dams)

Post-Bonneville Dam cumulative survival



Relative survival



*Rechisky et al. (*In Press*). Marine Ecology Progress Series (2011 work in collaboration with S. Narum and Jon Hess, CRITFC)

Key Assumptions

Survival of tagged smolts representative of untagged smolts.

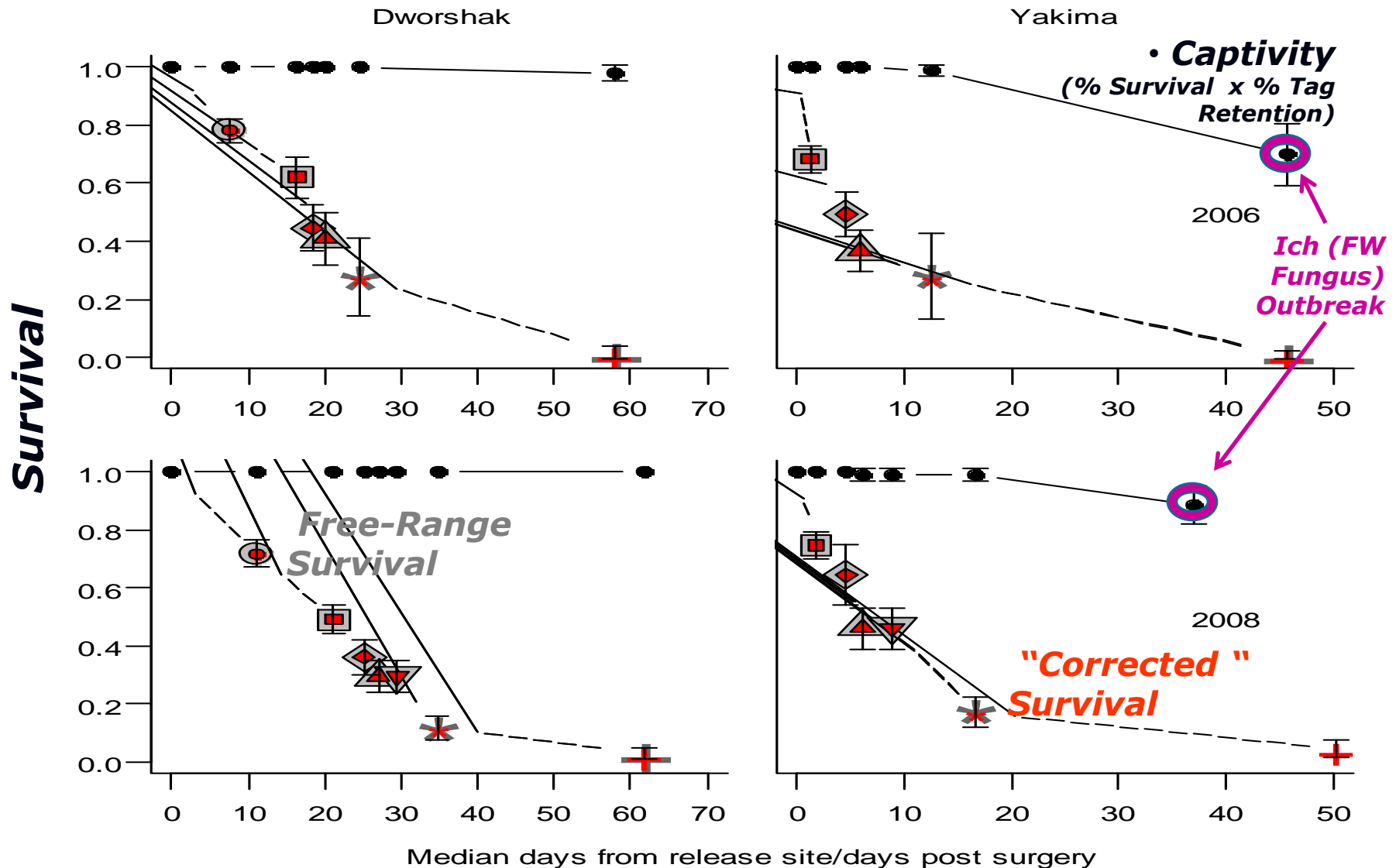
✓ *Size of smolts*

□ *Effect of tagging ("Close" to zero impact)*

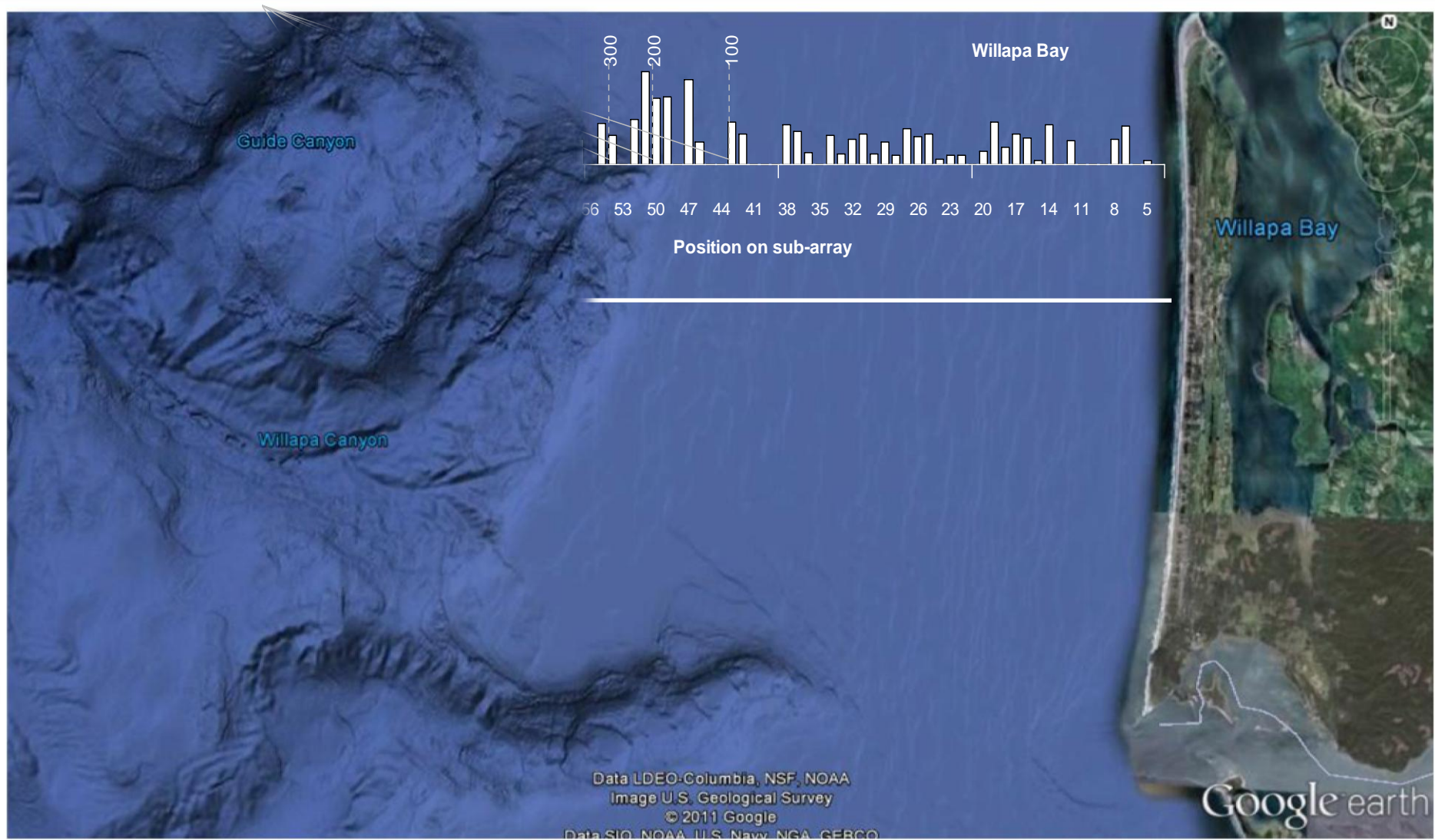
□ *Behavior (Movement over array)*

Effects of Tagging

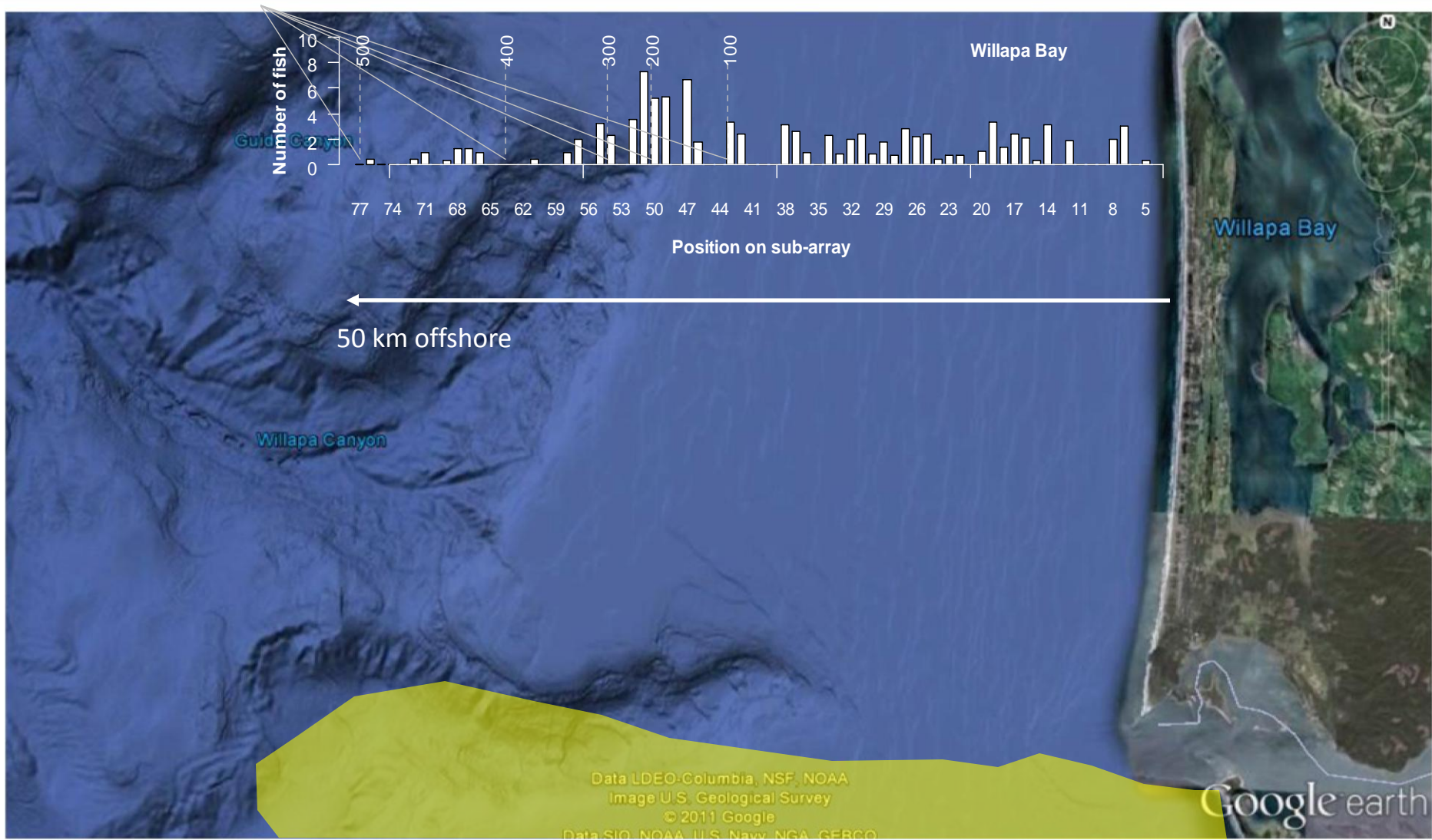
(Rechisky & Welch (2010) Pacific Northwest Aquatic Monitoring Partnership Special Publication 2010-002, 4:69-94)



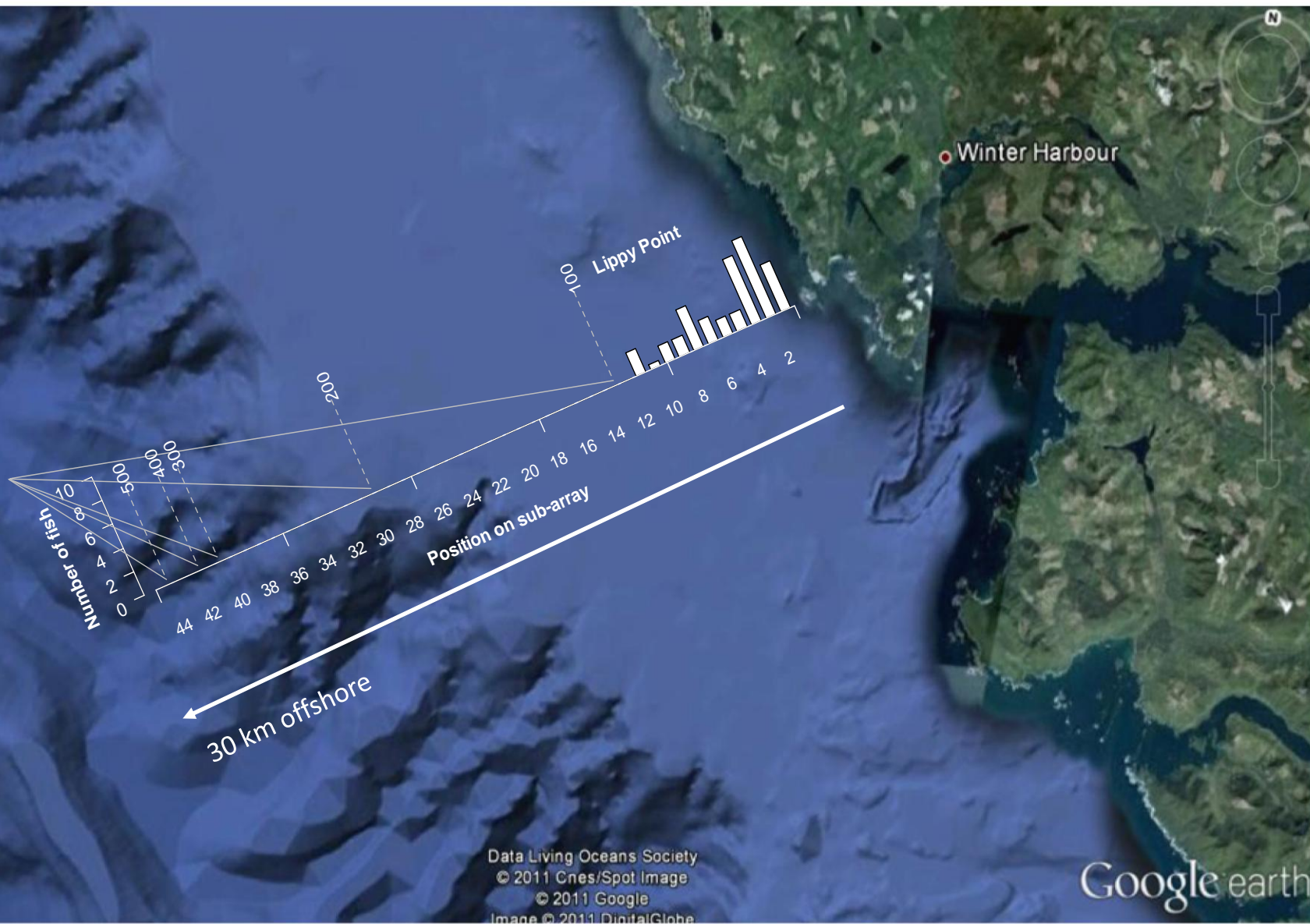
2011 Smolt Distribution on the shelf at Willapa Bay, WA out to 300 m isobath



2011 Smolt Distribution on the shelf at Willapa Bay, WA out to 500 m isobath



Smolt Distribution on the shelf at Lippy Point, BC (NWVI; 2011)



Conclusions

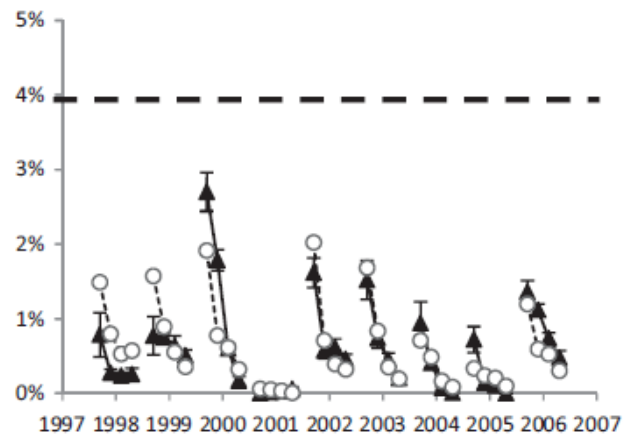
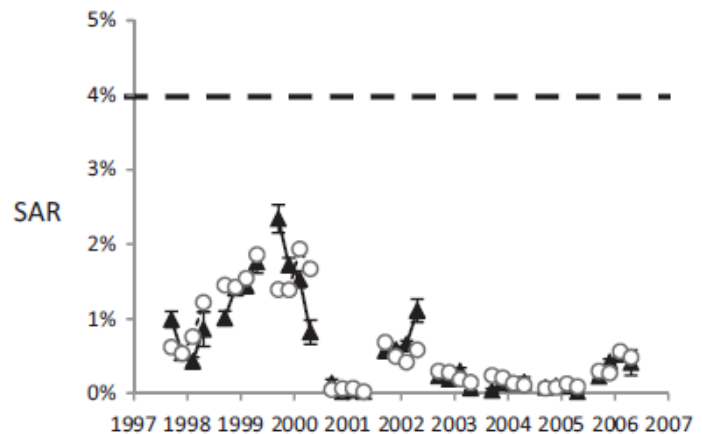
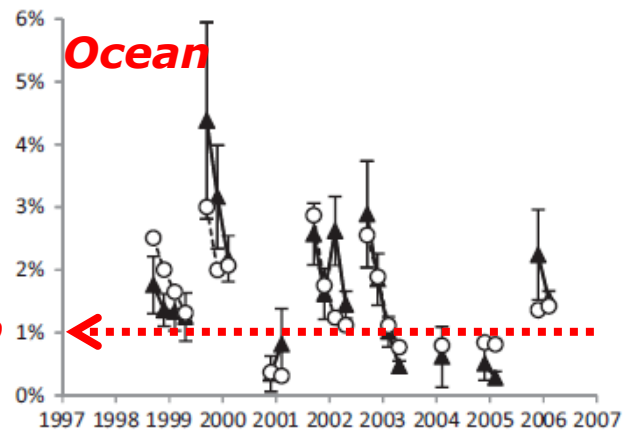
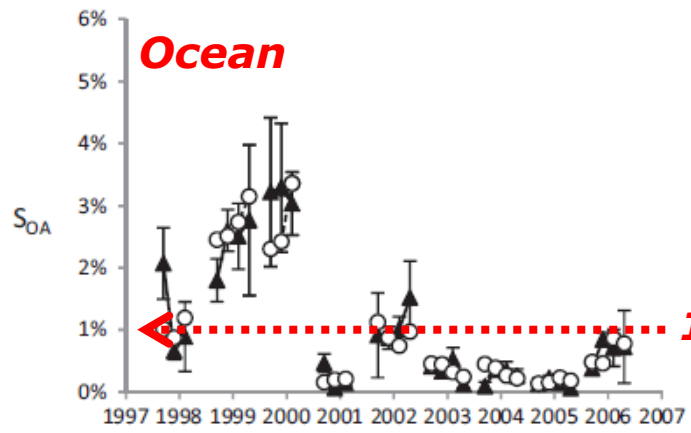
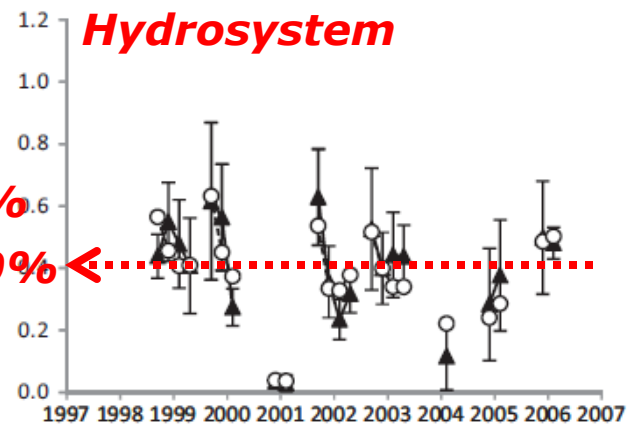
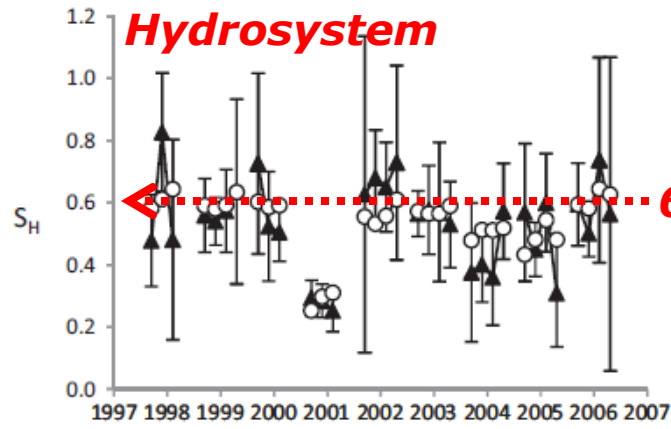
- ❑ Post-Bonneville survival in the lower river and estuary was similar for In-River and Transported Snake River yearling Chinook
- ❑ Subsequent survival in the plume and coastal ocean was similar in 4 of 5 years
 - ❑ *2011 was the first time we observed evidence of reduced survival of transported smolts in the early marine period*
- ❑ Differences in adult return rates likely develop far from the Columbia River.

Conclusions

- ❑ Post-Bonneville Dam survival was similar for Snake River and Columbia River yearling Chinook
 - ❑ Passing through more dams does not result in lower survival than is the case for smolts that pass through fewer dams... *"No Delayed Mortality"*
 - ❑ Transportation in barges does not result in lower survival either... *"No Differential-Delayed Mortality"*
- ❑ Decoupling ocean and freshwater survival processes is important (if appropriate)... hydrosystem operations can then be distinguished from poor ocean survival when salmon returns are bad.

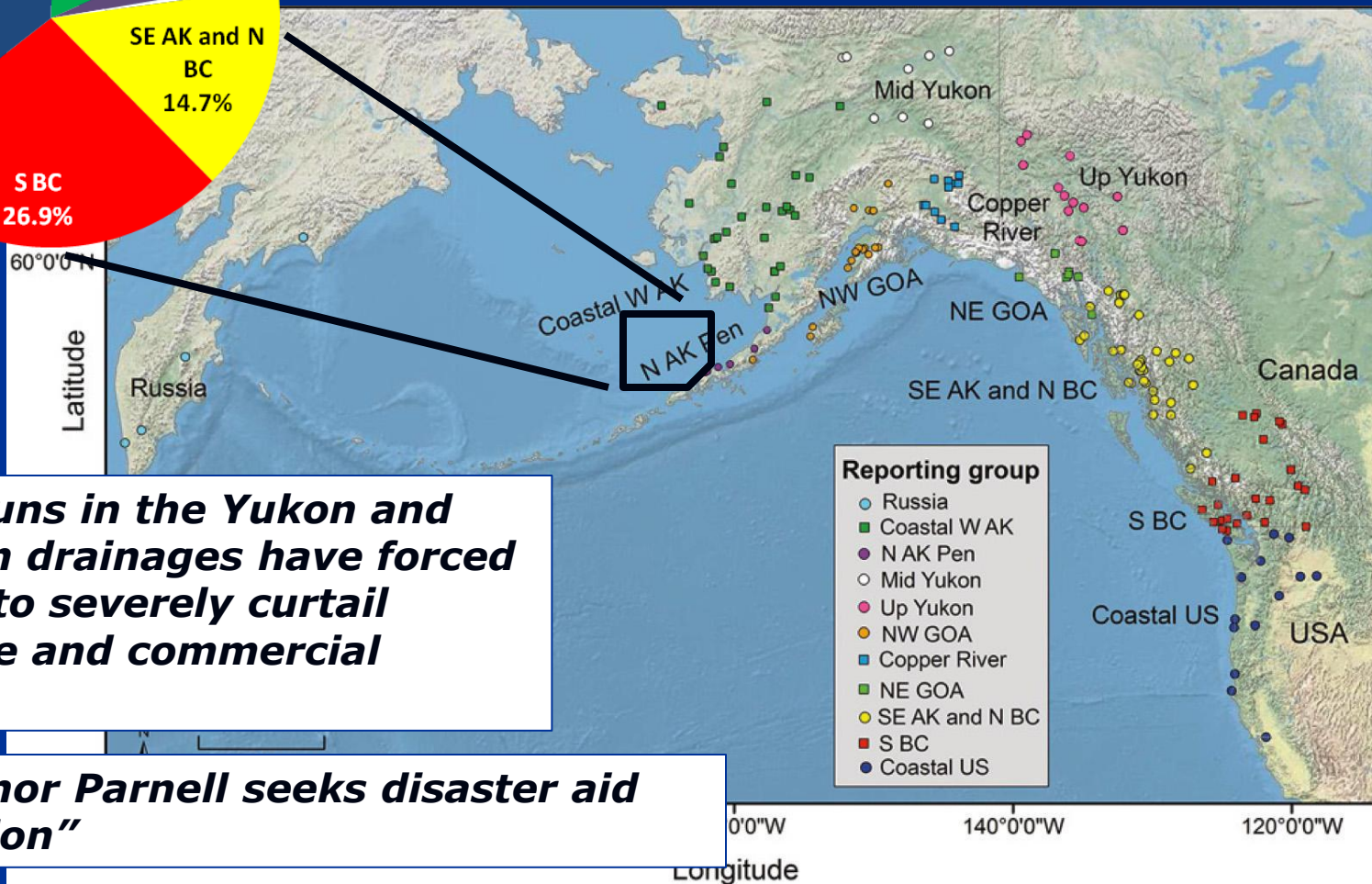
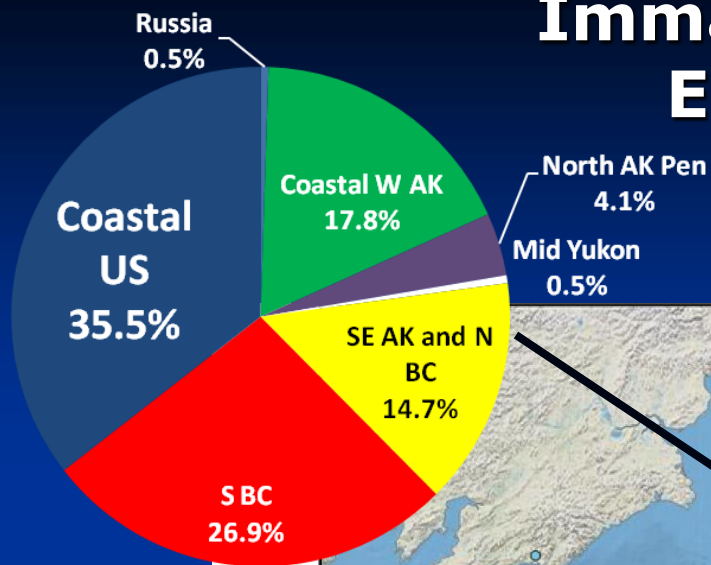
Chinook salmon

steelhead



**Haeseker
et al
2013
TAFS
(Fig. 5)**

Immature Chinook caught on the Eastern Bering Sea Shelf* (June 2005 & 2006)



"The low runs in the Yukon and Kuskokwim drainages have forced managers to severely curtail subsistence and commercial fishing."

"AK Governor Parnell seeks disaster aid authorization"

*from Larson et al. 2013. Can. J. Fish. Aquat. Sci. 70:1-14.



Acoustic Tagging

Transport DM *Hydro DM*



Snake IR

Snake TR

**Mid-upper
Columbia IR**

2006, 2008, 2009
(V9, ≥140 mm FL)

Dworshak
(400)

Dworshak
(200, 400)

Cle Elum
(400)

2010
(V7, ≥130 mm FL)

Lower Granite Dam
(400)

Lower Granite Dam
(400)

John Day Dam
(800)

2011*
(V7, ≥130 mm FL)

Bonneville Dam
(80)

Lower Granite Dam
(200)

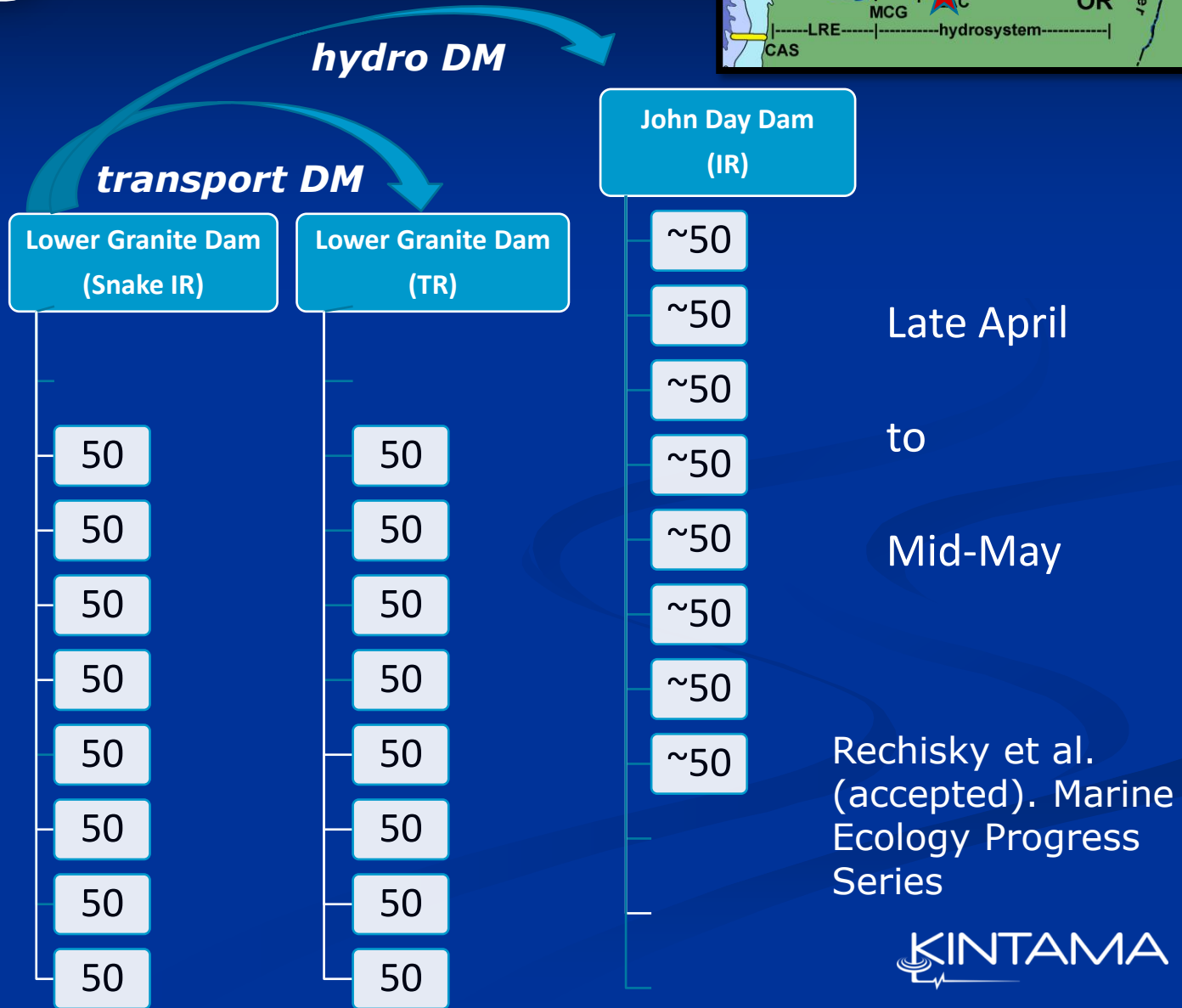
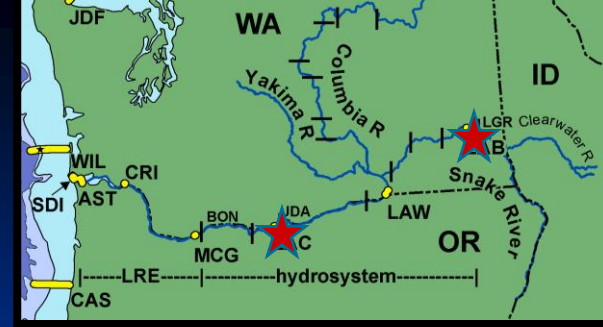
Bonneville Dam
(380)

* GIS to determine stock ID



2010 Tagging

(V7 tags ≥ 130 mm FL)



Mid-May

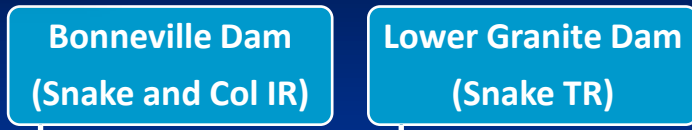
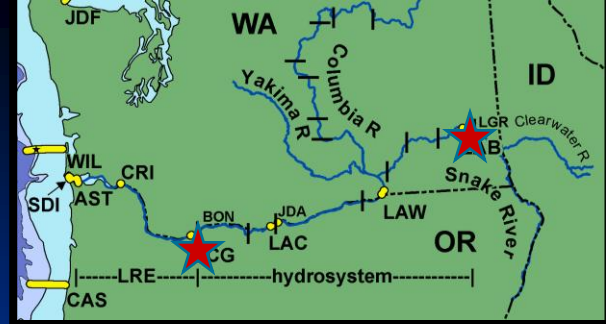
To

Late May



2011 Tagging

(V7 tags ≥ 130 mm FL)



Late April

100
100

Early May

50 ↔ 50
50 ↔ 50

Mid May

75 ↔ 50
75 ↔ 50

Late May

75
75

Genetic Stock ID

Similar Ocean Entry Time

Similar Ocean Entry Time

Rechisky et al. (accepted). Marine Ecology Progress Series

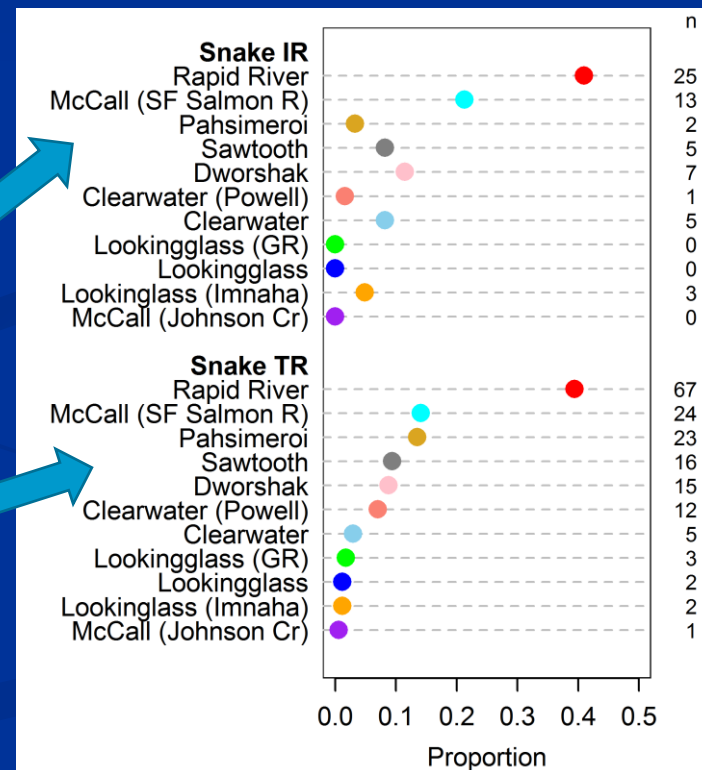


2011 Stock Identification Results*

- Single Nucleotide Polymorphisms (SNPs)
- Parentage Based Tagging (PBT) (Snake R hatchery smolts only)

Collection site	Treatment type	Stock ID	Method used to determine stock	n	% hatchery origin
BON	In-river	Snake R	PBT + SNP	80	95
BON	In-river	Mid-Col R	SNP	59	81
BON	In-river	Upper Col R	SNP	386	92
LGR	Transport	Snake R	PBT + site	200	95

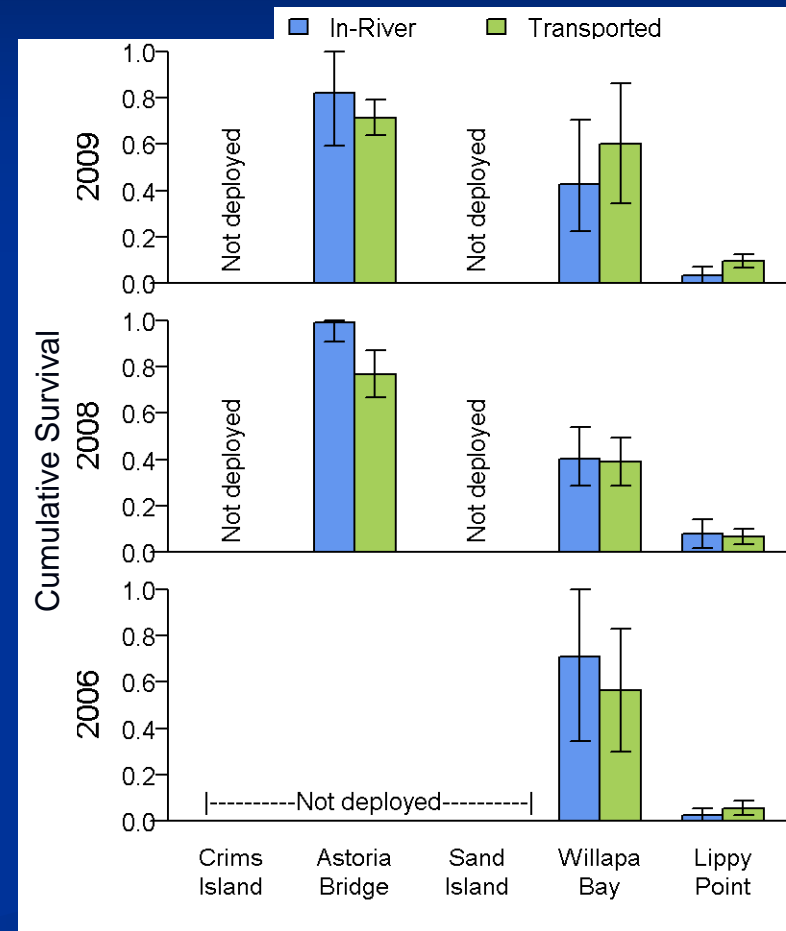
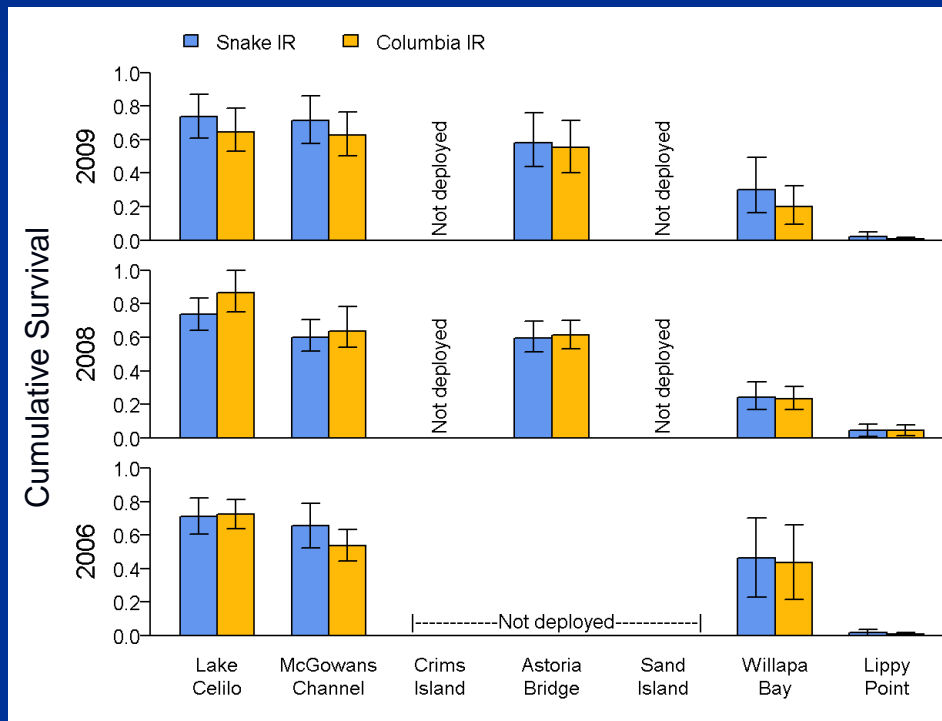
hydro DM
transport DM



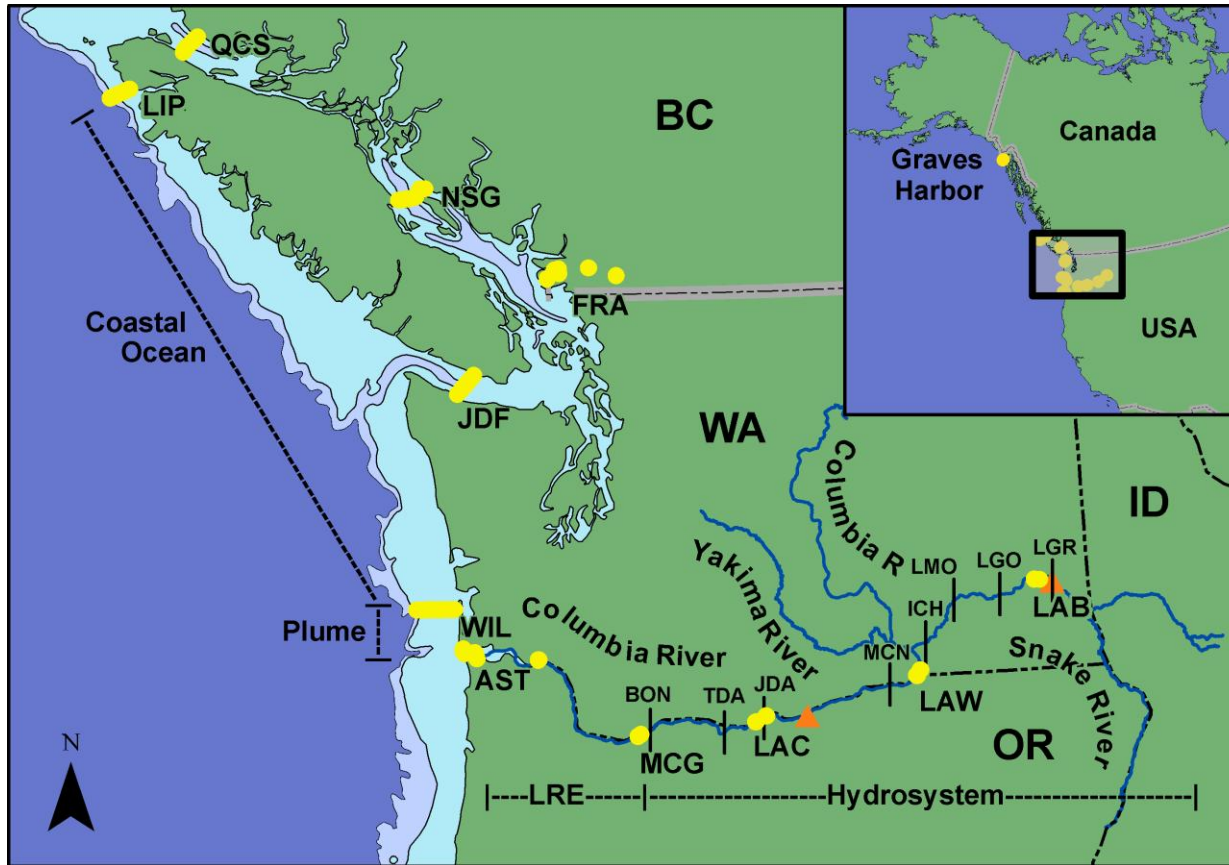
*from Jon Hess and Shawn Narum at the Columbia River Inter-Tribal Fish Commission and reported in Rechisky et al. (accepted). Marine Ecology Progress Series

Cumulative Survival Estimates 2006-2009

(Dworshak & Yakima spring Chinook)

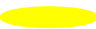



Map of the 2010 COAST and POST Arrays

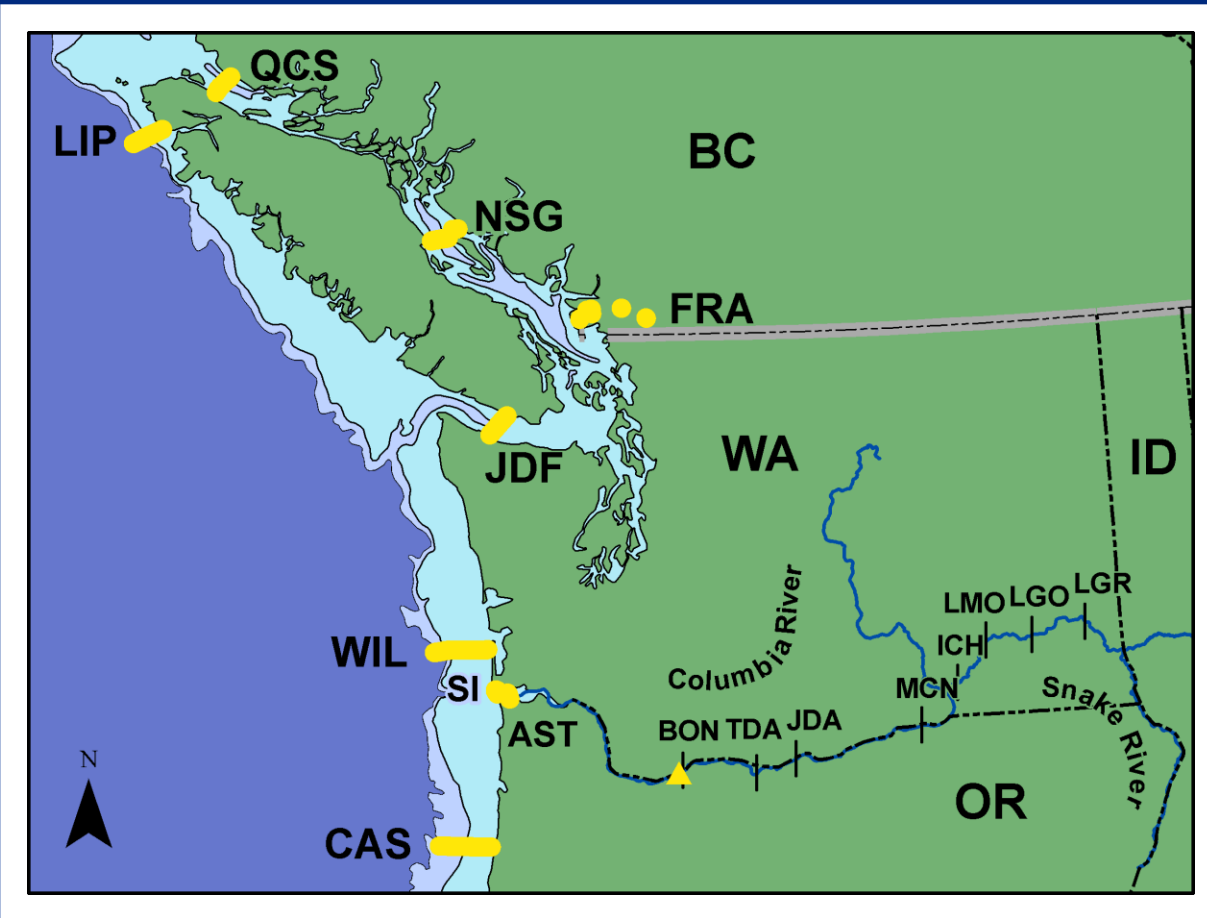


- Sand Island & Crims Island sub-arrays added
- Sub-array added at Cascade Head, OR removed
- Smolts collected at Lower Granite Dam
 - Transported
 - In-River
- Smolts collected at John Day Dam

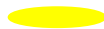

LAB= Lake Bryan
LAW- Lake Wallula
LAC= Lake Celilo
MCG=McGowans Channel
AST=Astoria Bridge
SI= Sand Island
WIL=Willapa Bay
LIP= Lippy Point
Graves Harbor

-  Acoustic sub-array
-  Capture/Release site

Map of the 2011 COAST and POST Arrays

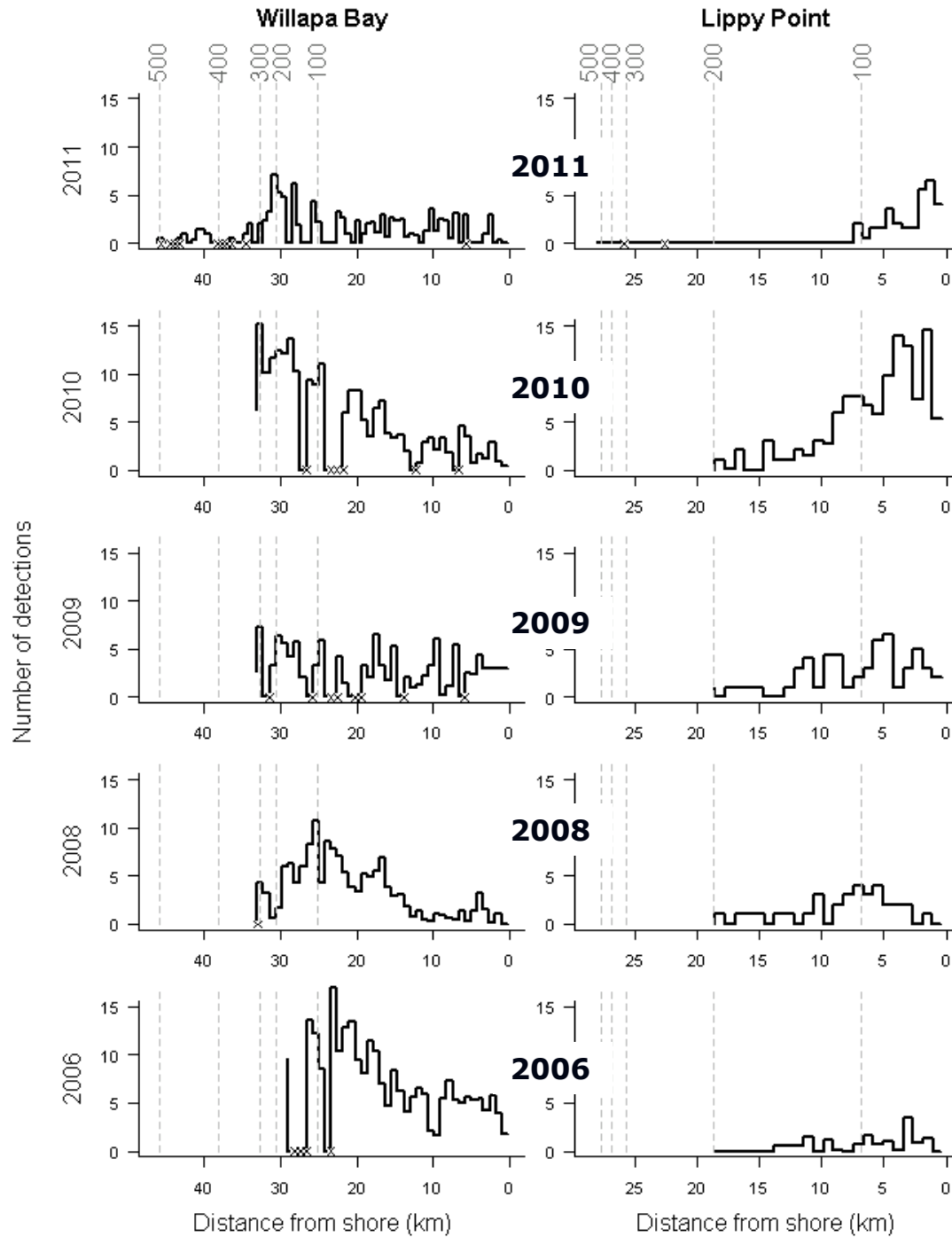


- Coastal ocean sub-arrays were extended offshore to 500 m depth
- Sub-array added at Cascade Head, OR
- No receivers in the hydrosystem, or in AK
- Smolts collected at Bonneville Dam
 - DNA sampled

-  Acoustic sub-array
-  Capture/Release site

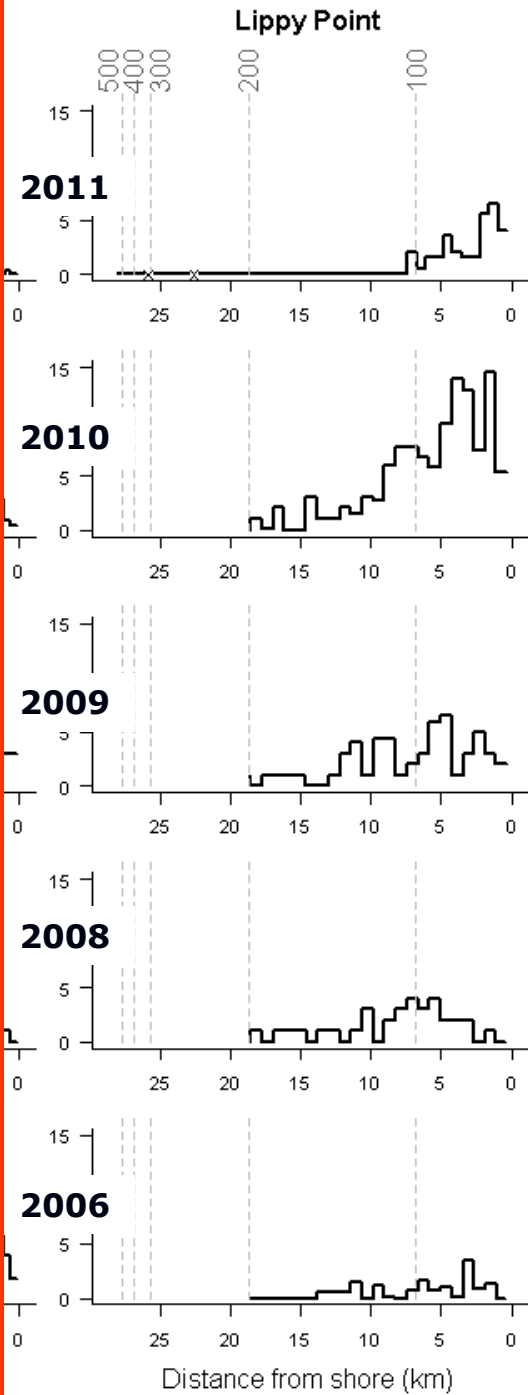
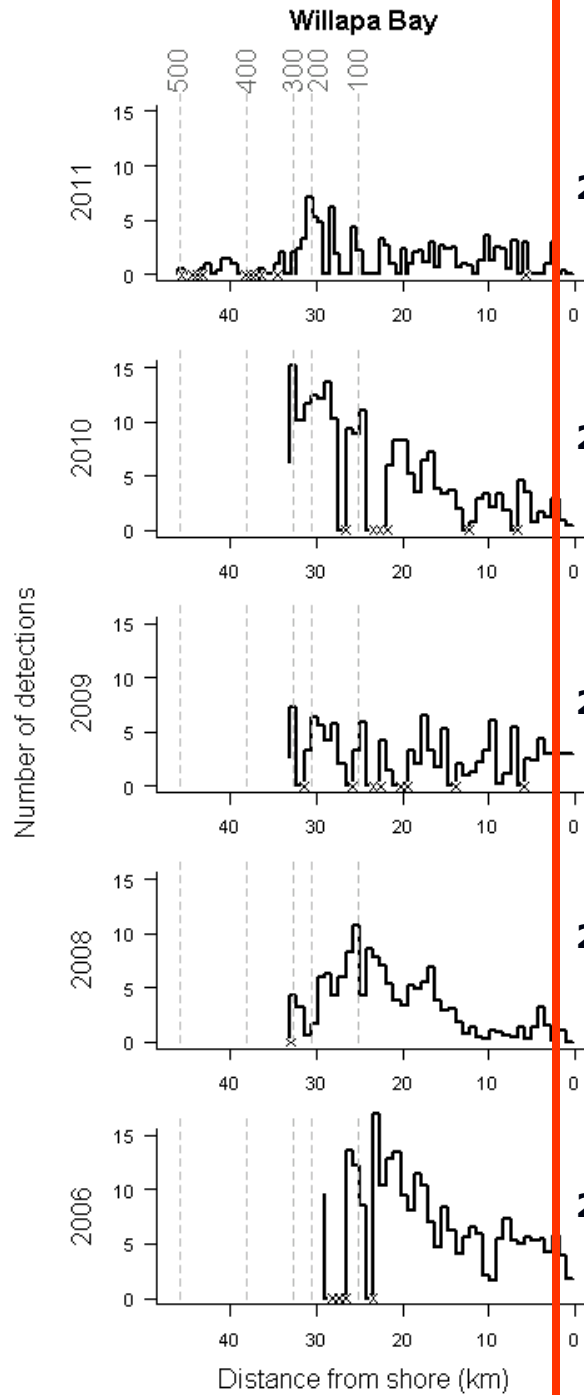
AST=Astoria Bridge
SI=Sand Island
WIL=Willapa Bay
LIP= Lippy Point
CAS=Cascade Head

Willapa Bay



Lippy Point

Willapa Bay



Lippy Point

Thank You!

- Melinda Jacobs (Kintama)-Tagging operations
- Paul Winchell (Kintama)- Array operations
- Dworshak and Kooskia NFH staff-
 - Ray Jones, Adam Izbicki
- Yakama Nation, Prosser Hatchery and Chandler Juvenile Fish Monitoring Facility staff
 - Dave Fast, Mark Johnston, Joe Blodgett, Michael Fiander, Bill Bosch, Dave Lind
- Smolt Monitoring Facility staff at Lower Granite, John Day and Bonneville dams
- CRITFC- Jon Hess, Shawn Narum



- Funding: Dept. of Energy, Bonneville Power Administration