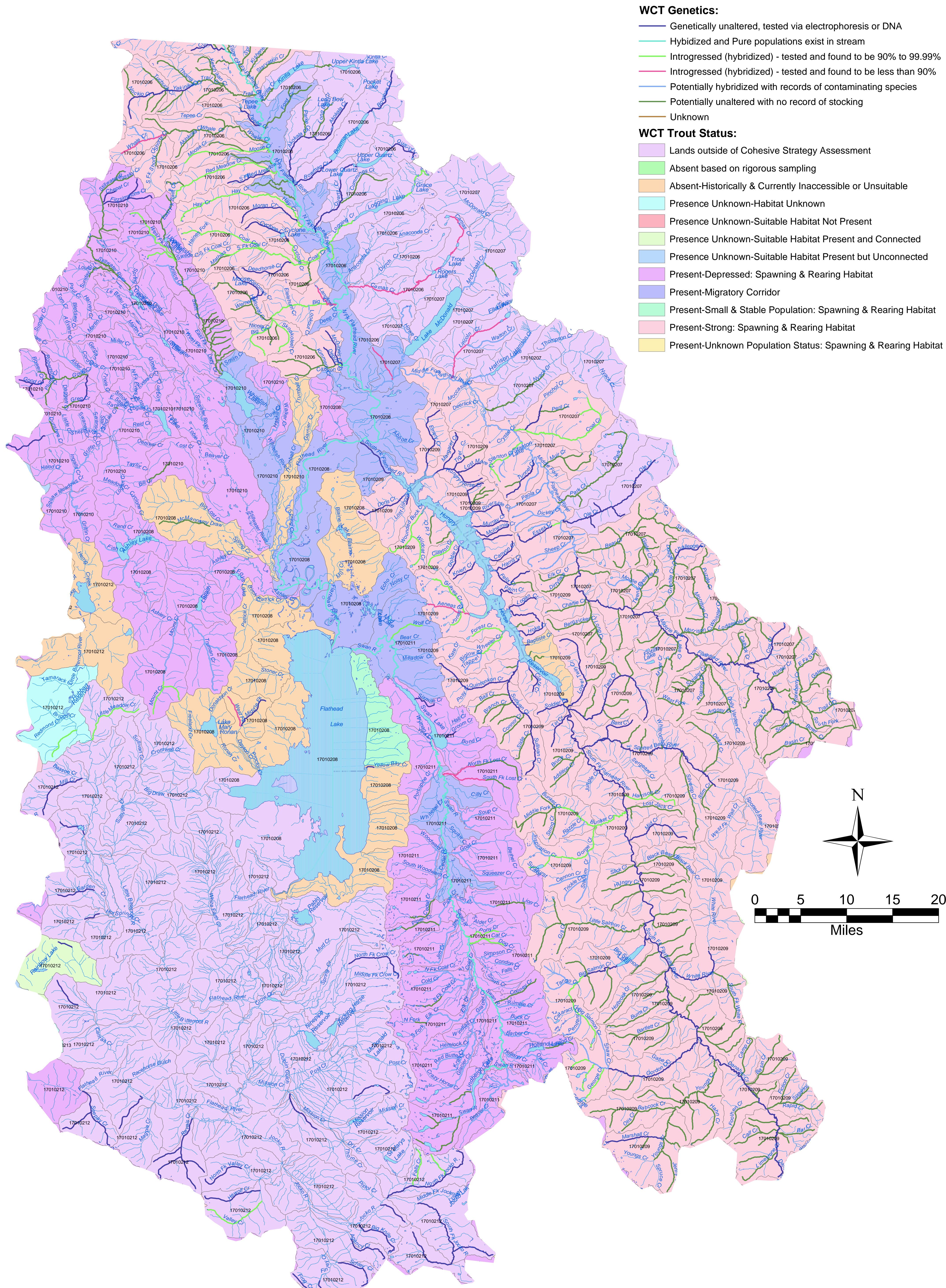


Westslope Cutthroat Trout Genetic Distribution & Status Flathead Subbasin



- WCT Genetics:**
- Genetically unaltered, tested via electrophoresis or DNA
 - Hybridized and Pure populations exist in stream
 - Introgressed (hybridized) - tested and found to be 90% to 99.99%
 - Introgressed (hybridized) - tested and found to be less than 90%
 - Potentially hybridized with records of contaminating species
 - Potentially unaltered with no record of stocking
 - Unknown
- WCT Trout Status:**
- Lands outside of Cohesive Strategy Assessment
 - Absent based on rigorous sampling
 - Absent-Historically & Currently Inaccessible or Unsuitable
 - Presence Unknown-Habitat Unknown
 - Presence Unknown-Suitable Habitat Not Present
 - Presence Unknown-Suitable Habitat Present and Connected
 - Presence Unknown-Suitable Habitat Present but Unconnected
 - Present-Depressed: Spawning & Rearing Habitat
 - Present-Migratory Corridor
 - Present-Small & Stable Population: Spawning & Rearing Habitat
 - Present-Strong: Spawning & Rearing Habitat
 - Present-Unknown Population Status: Spawning & Rearing Habitat

DATA SOURCE: Westslope cutthroat trout status from the USDA Forest Service, Northern Region National Fire Plan, Cohesive Strategy Team, January, 2003. Westslope cutthroat trout genetics from Montana Fish, Wildlife & Parks, Information Services Unit, May 2003.

S:\Fish\SubbasinPlanning\WCTStatusFlathead.mxd JH March 15, 2004

