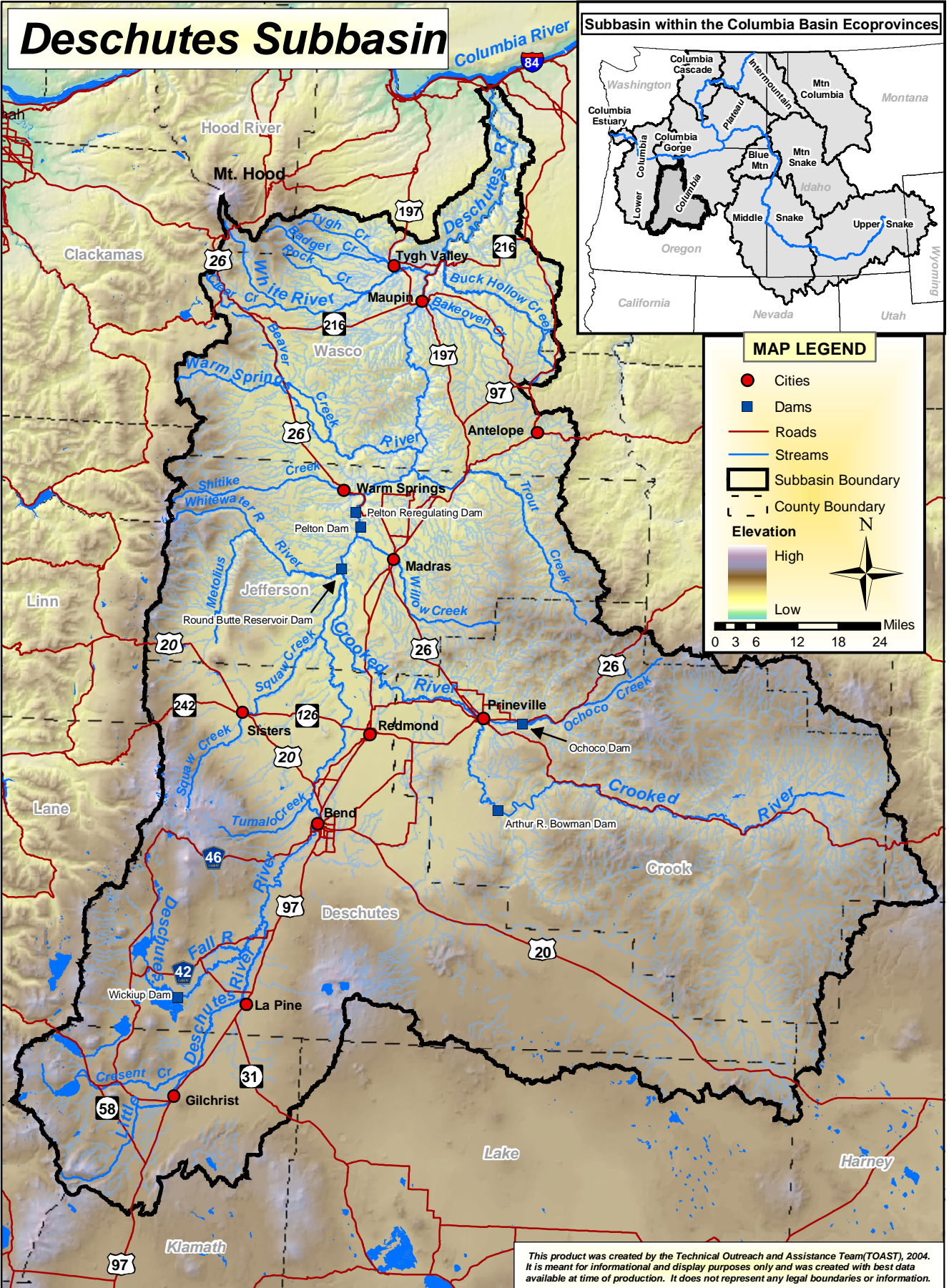


# Deschutes Subbasin

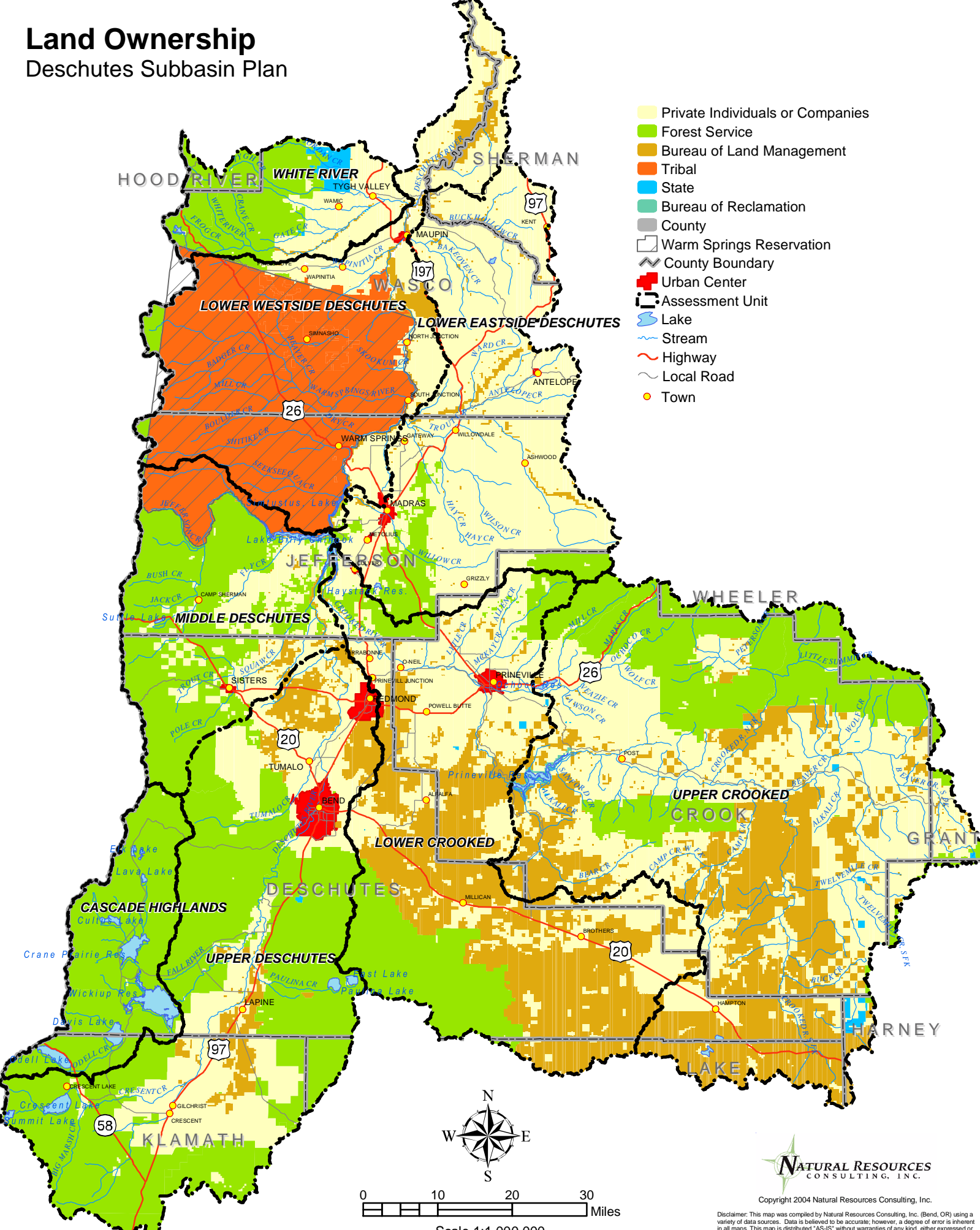
## Subbasin within the Columbia Basin Eco Provinces



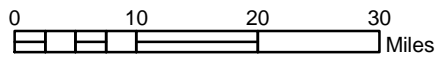
This product was created by the Technical Outreach and Assistance Team (TOAST), 2004. It is meant for informational and display purposes only and was created with best data available at time of production. It does not represent any legal boundaries or information.

# Land Ownership

## Deschutes Subbasin Plan



- Private Individuals or Companies
- Forest Service
- Bureau of Land Management
- Tribal
- State
- Bureau of Reclamation
- County
- Warm Springs Reservation
- County Boundary
- Urban Center
- Assessment Unit
- Lake
- Stream
- Highway
- Local Road
- Town



Scale 1:1,000,000



Copyright 2004 Natural Resources Consulting, Inc.

Disclaimer: This map was compiled by Natural Resources Consulting, Inc. (Bend, OR) using a variety of data sources. Data is believed to be accurate; however, a degree of error is inherent in all maps. This map is distributed "AS-IS" without warranties of any kind, either expressed or implied, including but not limited to warranties of suitability to a particular purpose or use. This map is intended for use only at the published scale. Reproduction is prohibited.

# Restoration Projects

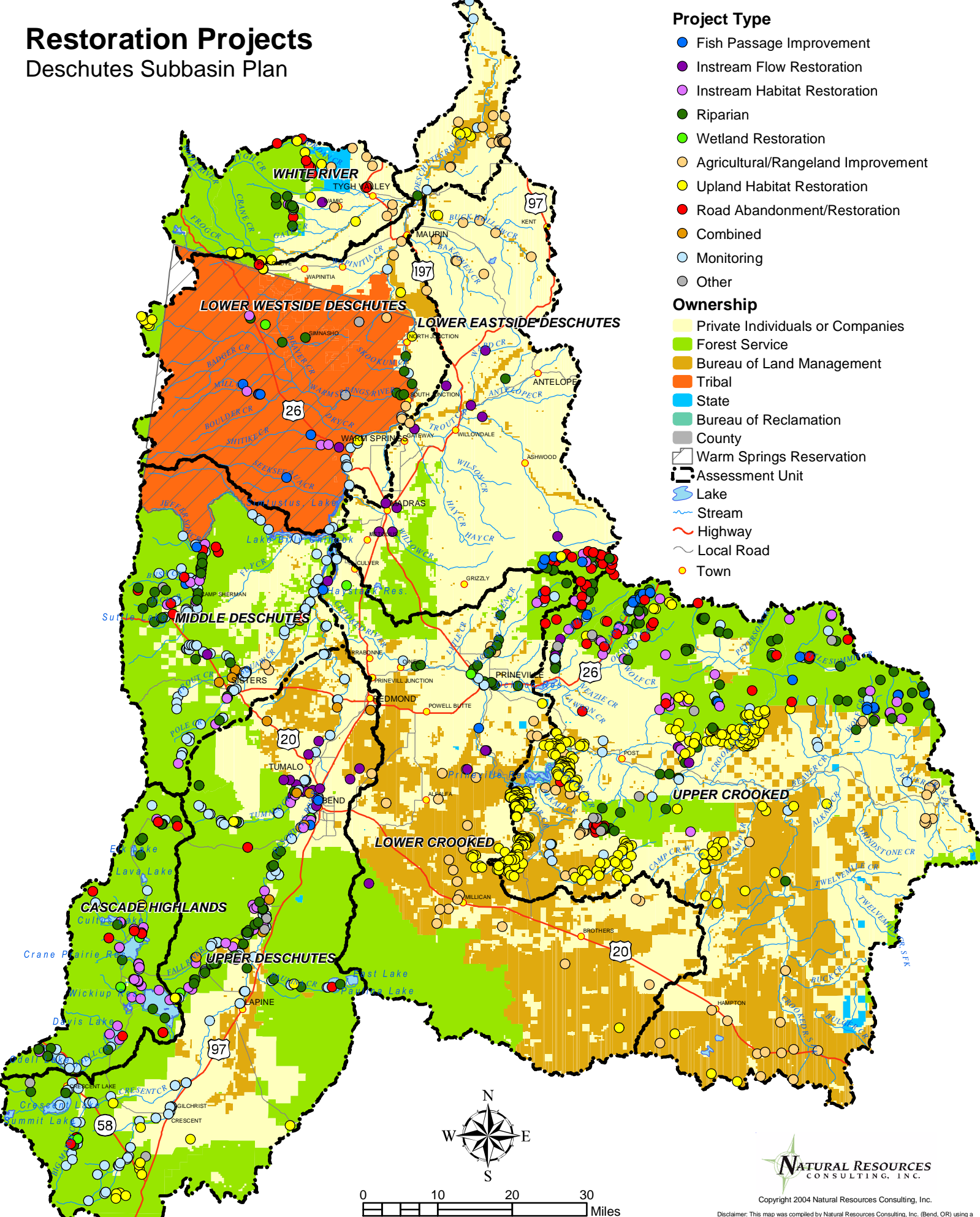
## Deschutes Subbasin Plan

### Project Type

- Fish Passage Improvement
- Instream Flow Restoration
- Instream Habitat Restoration
- Riparian
- Wetland Restoration
- Agricultural/Rangeland Improvement
- Upland Habitat Restoration
- Road Abandonment/Restoration
- Combined
- Monitoring
- Other

### Ownership

- Private Individuals or Companies
- Forest Service
- Bureau of Land Management
- Tribal
- State
- Bureau of Reclamation
- County
- Warm Springs Reservation
- Assessment Unit
- ~ Lake
- ~ Stream
- ~ Highway
- ~ Local Road
- Town



Copyright 2004 Natural Resources Consulting, Inc.

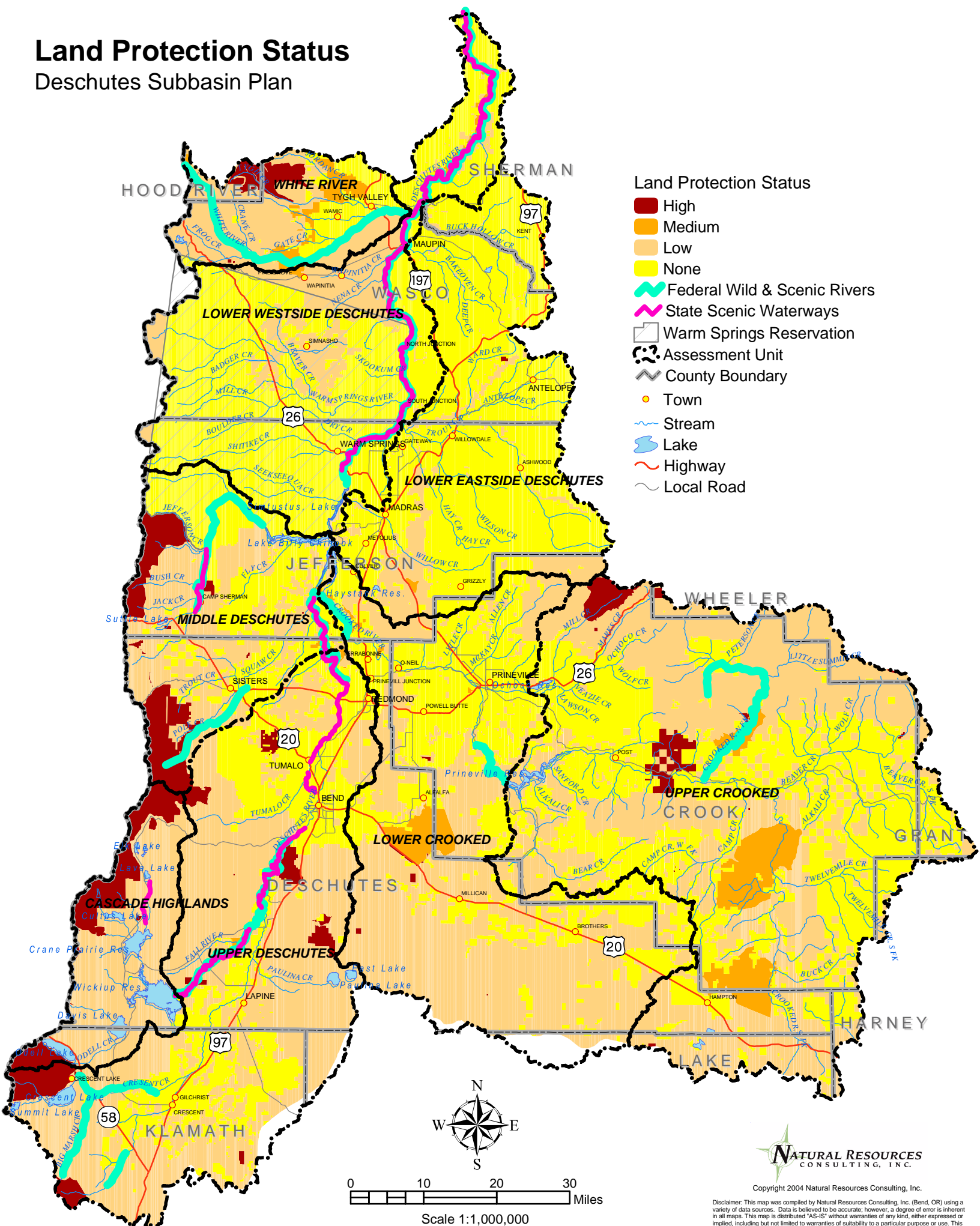
Disclaimer: This map was compiled by Natural Resources Consulting, Inc. (Bend, OR) using a variety of data sources. Data is believed to be accurate; however, a degree of error is inherent in all maps. This map is distributed "AS-IS" without warranties of any kind, either expressed or implied, including but not limited to warranties of suitability to a particular purpose or use. This map is intended for use only at the published scale. Reproduction is prohibited.

Data Sources: Deschutes Resources Conservancy Existing Activities Inventory.  
 Regional Ecosystem Office (REO) Interagency Restoration Database. (<http://www.reo.gov/restoration>)  
 Oregon Department of Forestry 2001

Scale 1:1,000,000

# Land Protection Status

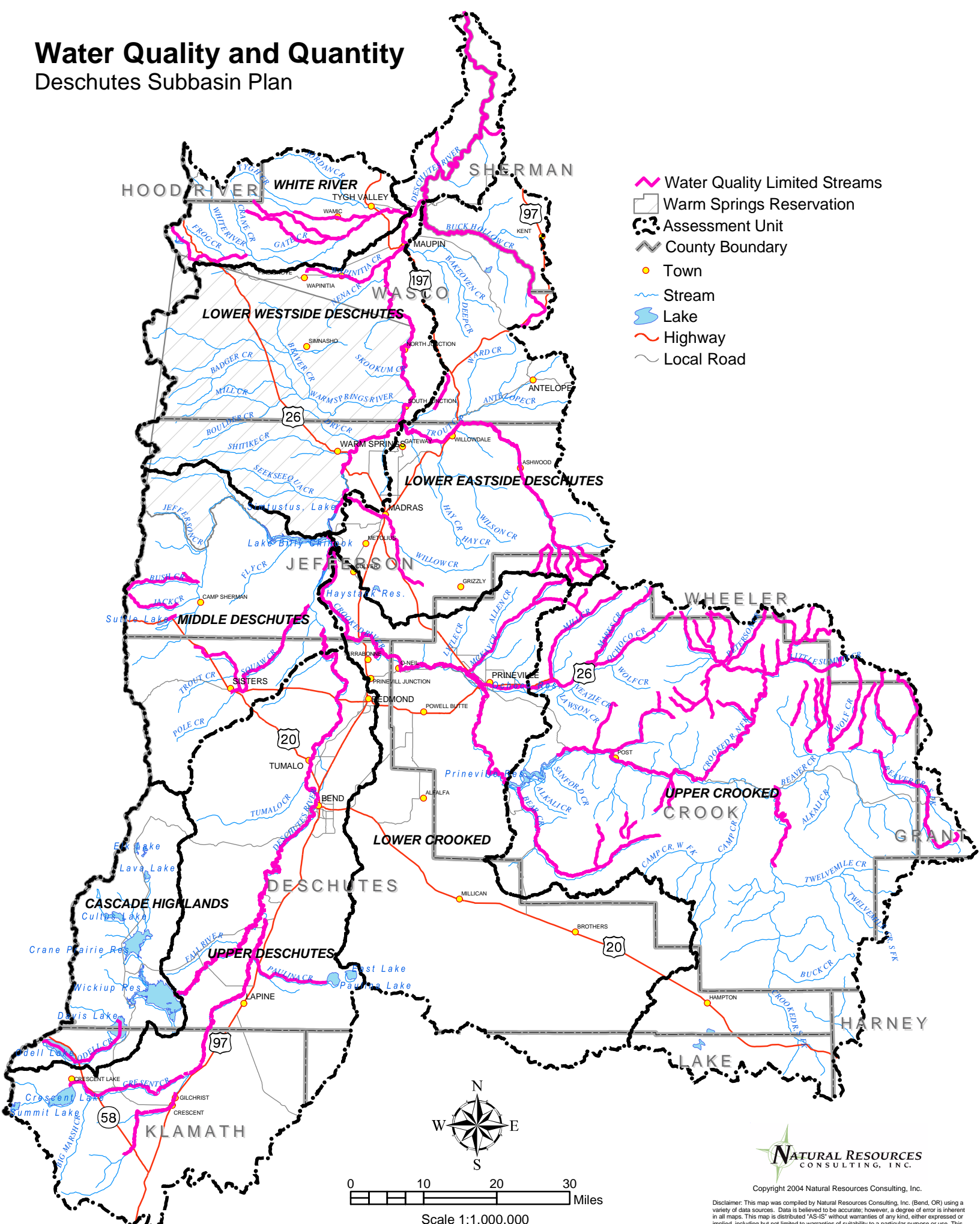
## Deschutes Subbasin Plan



Data Source: IBIS. 2003. Interactive Biodiversity Information System (<http://ibis.nwhi.org>), Northwest Habitat Institute, Corvallis, OR. And The Northwest Power and Conservation Council

# Water Quality and Quantity

## Deschutes Subbasin Plan



Data Source: 2002 Oregon DEQ 303d Listed Streams



Copyright 2004 Natural Resources Consulting, Inc.

Disclaimer: This map was compiled by Natural Resources Consulting, Inc. (Bend, OR) using a variety of data sources. Data is believed to be accurate; however, a degree of error is inherent in all maps. This map is distributed "AS-IS" without warranties of any kind, either expressed or implied, including but not limited to warranties of suitability to a particular purpose or use. This map is intended for use only at the published scale. Reproduction is prohibited.