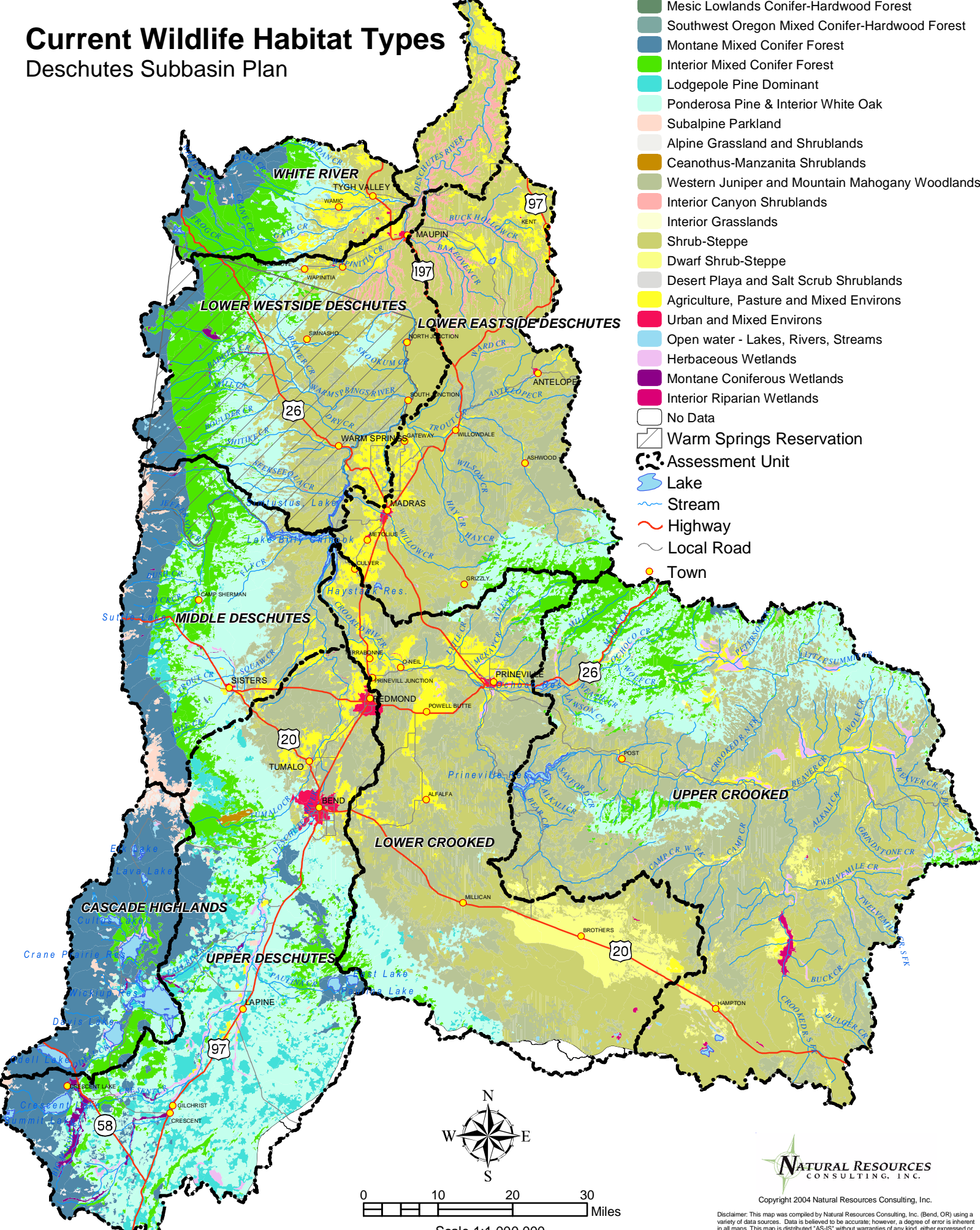



Current Wildlife Habitat Types

Deschutes Subbasin Plan

- Mesic Lowlands Conifer-Hardwood Forest
- Southwest Oregon Mixed Conifer-Hardwood Forest
- Montane Mixed Conifer Forest
- Interior Mixed Conifer Forest
- Lodgepole Pine Dominant
- Ponderosa Pine & Interior White Oak
- Subalpine Parkland
- Alpine Grassland and Shrublands
- Ceanothus-Manzanita Shrublands
- Western Juniper and Mountain Mahogany Woodlands
- Interior Canyon Shrublands
- Interior Grasslands
- Shrub-Steppe
- Dwarf Shrub-Steppe
- Desert Playa and Salt Scrub Shrublands
- Agriculture, Pasture and Mixed Environs
- Urban and Mixed Environs
- Open water - Lakes, Rivers, Streams
- Herbaceous Wetlands
- Montane Coniferous Wetlands
- Interior Riparian Wetlands
- No Data
- Warm Springs Reservation
- Assessment Unit
- Lake
- Stream
- Highway
- Local Road
- Town



Data Source: IBIS. 2003. Interactive Biodiversity Information System (<http://ibis.nwhi.org>), Northwest Habitat Institute, Corvallis, OR, and The Northwest Power and Conservation Council.


 Copyright 2004 Natural Resources Consulting, Inc.
Disclaimer: This map was compiled by Natural Resources Consulting, Inc. (Bend, OR) using a variety of data sources. Data is believed to be accurate; however, a degree of error is inherent in all maps. This map is distributed "AS-IS" without warranties of any kind, either expressed or implied, including but not limited to warranties of suitability to a particular purpose or use. This map is intended for use only at the published scale. Reproduction is prohibited.

Historic Wildlife Habitat Types

Deschutes Subbasin Plan

- Mesic Lowlands Conifer-Hardwood Forest
- Montane Mixed Conifer Forest
- Interior Mixed Conifer Forest
- Lodgepole Pine Dominant
- Ponderosa Pine & Interior White Oak
- Upland Aspen forest
- Subalpine Parkland
- Alpine Grassland and Shrublands
- Western Juniper and Mountain Mahogany
- Interior Grasslands
- Shrub-Steppe
- Dwarf Shrub-Steppe
- Desert Playa and Salt Scrub Shrublands
- Open water - Lakes, Rivers, Streams
- Herbaceous Wetlands
- Interior Riparian Wetlands
- No Data
- Warm Springs Reservation
- Assessment Unit
- Lake
- Stream
- Highway
- Local Road
- Town



Copyright 2004 Natural Resources Consulting, Inc.

Disclaimer: This map was compiled by Natural Resources Consulting, Inc. (Bend, OR) using a variety of data sources. Data is believed to be accurate; however, a degree of error is inherent in all maps. This map is distributed "AS-IS" without warranties of any kind, either expressed or implied, including but not limited to warranties of suitability to a particular purpose or use. This map is intended for use only at the published scale. Reproduction is prohibited.

Data Source: IBIS. 2003. Interactive Biodiversity Information System (<http://ibis.nwhi.org>), Northwest Habitat Institute, Corvallis, OR, and The Northwest Power and Conservation Council.

Lower Deschutes CRP Lands

Deschutes Subbasin Plan

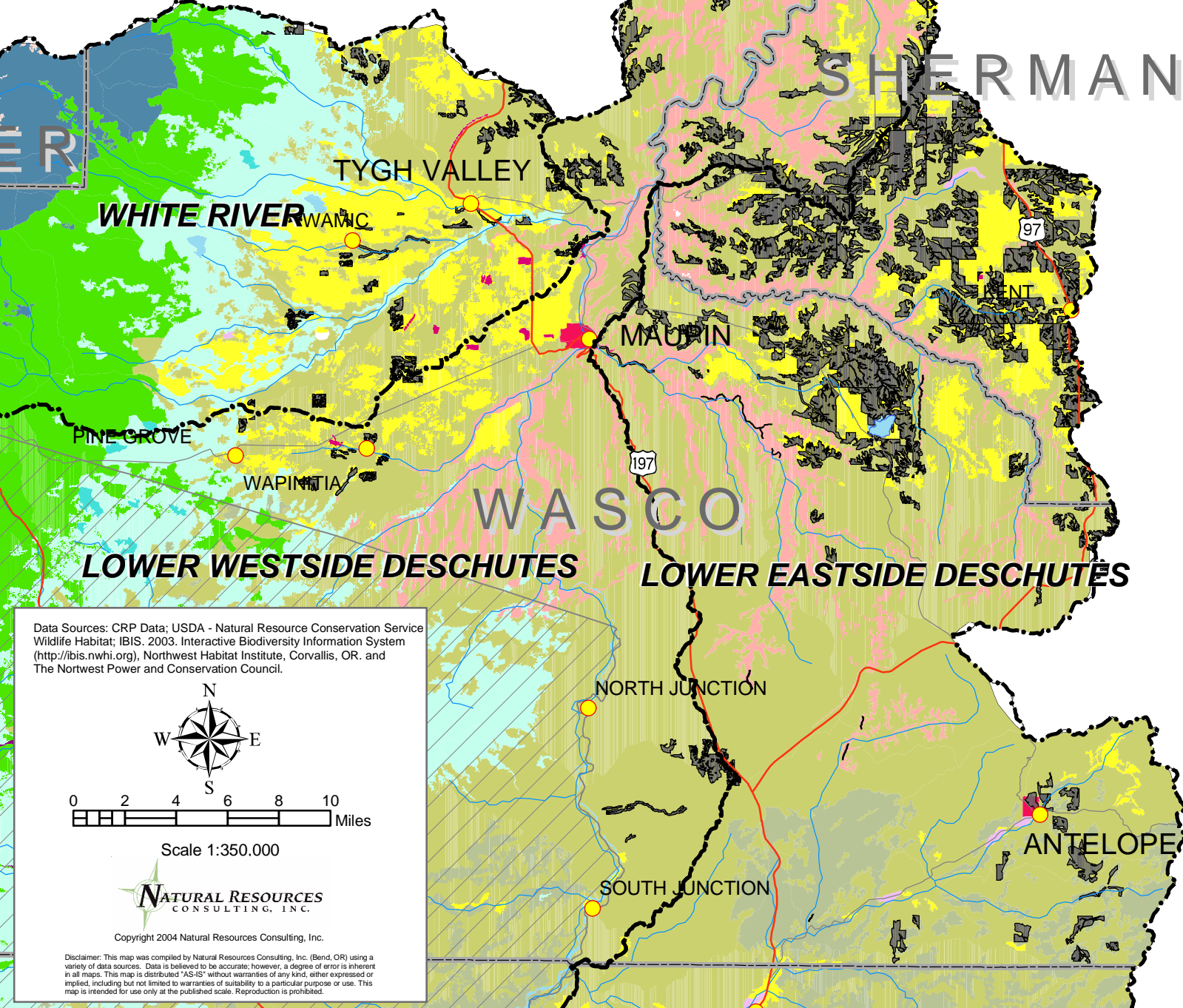
Conservation Reserve Program Lands

Current Wildlife Habitat Types

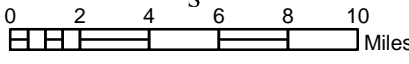
- Mesic Lowlands Conifer-Hardwood Forest
- Southwest Oregon Mixed Conifer-Hardwood Forest
- Montane Mixed Conifer Forest
- Interior Mixed Conifer Forest
- Lodgepole Pine Dominant
- Ponderosa Pine & Interior White Oak
- Subalpine Parkland
- Alpine Grassland and Shrublands
- Ceanothus-Manzanita Shrublands

- Western Juniper and Mountain Mahogany Woodlands
- Interior Canyon Shrublands
- Interior Grasslands
- Shrub-Steppe
- Dwarf Shrub-Steppe
- Desert Playa and Salt Scrub Shrublands
- Agriculture, Pasture and Mixed Environs
- Urban and Mixed Environs
- Open water - Lakes, Rivers, Streams
- Herbaceous Wetlands
- Montane Coniferous Wetlands
- Interior Riparian Wetlands
- No Data

- Assessment Unit
- County Boundary
- Warm Springs Reservation
- Stream
- Lake
- Highway
- Local Road
- Town



Data Sources: CRP Data; USDA - Natural Resource Conservation Service Wildlife Habitat; IBIS, 2003. Interactive Biodiversity Information System (<http://ibis.nwhi.org>), Northwest Habitat Institute, Corvallis, OR, and The Northwest Power and Conservation Council.



Scale 1:350,000

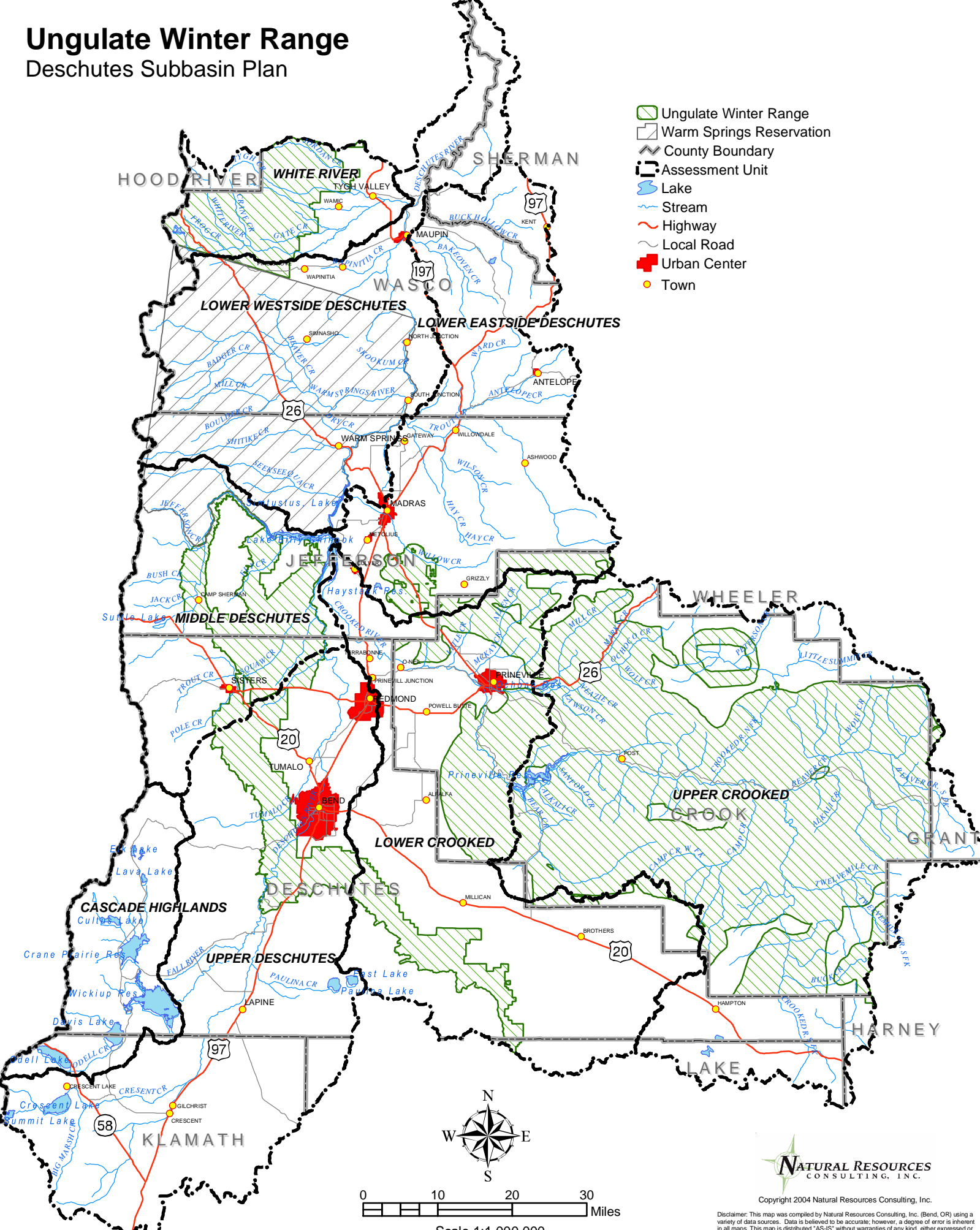


Copyright 2004 Natural Resources Consulting, Inc.

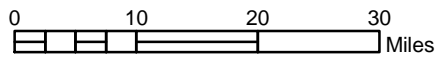
Disclaimer: This map was compiled by Natural Resources Consulting, Inc. (Bend, OR) using a variety of data sources. Data is believed to be accurate; however, a degree of error is inherent in all maps. This map is distributed "AS-IS" without warranties of any kind, either expressed or implied, including but not limited to warranties of suitability to a particular purpose or use. This map is intended for use only at the published scale. Reproduction is prohibited.

Ungulate Winter Range

Deschutes Subbasin Plan



- Ungulate Winter Range
- Warm Springs Reservation
- County Boundary
- Assessment Unit
- Lake
- Stream
- Highway
- Local Road
- Urban Center
- Town



Scale 1:1,000,000



Copyright 2004 Natural Resources Consulting, Inc.

Disclaimer: This map was compiled by Natural Resources Consulting, Inc. (Bend, OR) using a variety of data sources. Data is believed to be accurate; however, a degree of error is inherent in all maps. This map is distributed "AS-IS" without warranties of any kind, either expressed or implied, including but not limited to warranties of suitability to a particular purpose or use. This map is intended for use only at the published scale. Reproduction is prohibited.

Data Source: Crook County Planning Dept., Deschutes County Planning Dept.
Wasco County Planning Dept., ODFW and Information supplied by Local Resource Managers