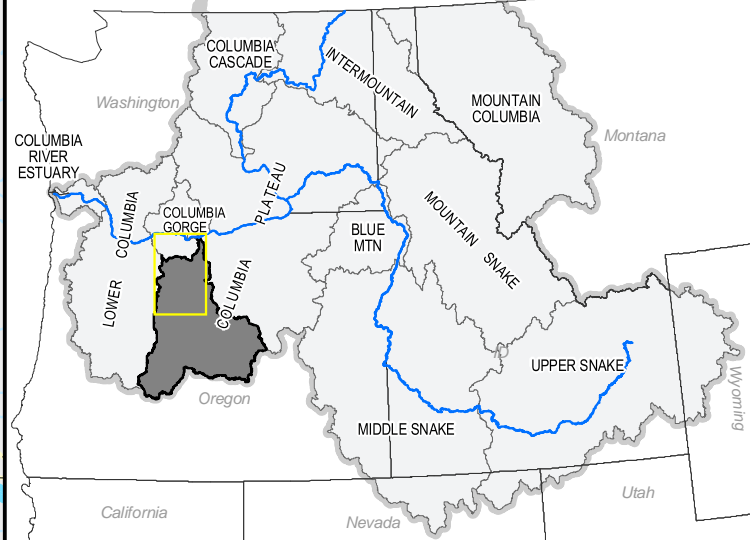
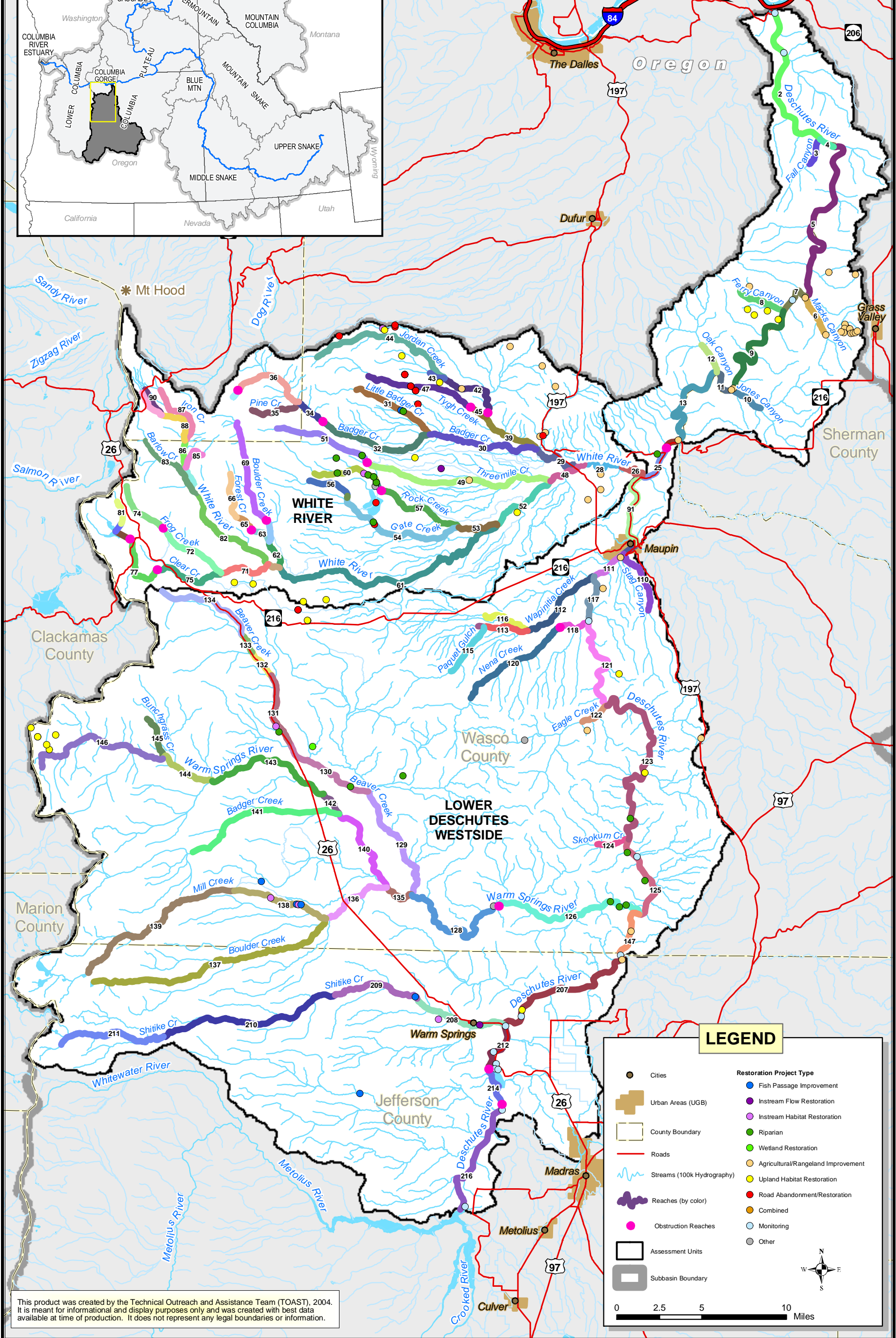


Subbasin within the Columbia Basin Ecoprovinces



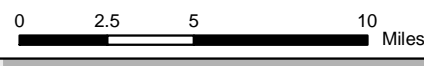
# DESCHUTES REACH SYSTEM

## Lower Deschutes Westside and White River



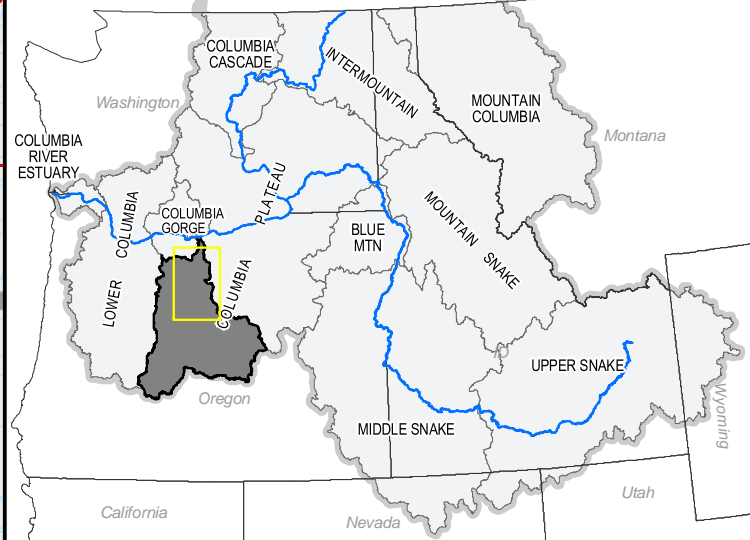
### LEGEND

Cities	Fish Passage Improvement
Urban Areas (UGB)	Instream Flow Restoration
County Boundary	Instream Habitat Restoration
Roads	Riparian
Streams (100k Hydrography)	Wetland Restoration
Reaches (by color)	Agricultural/Rangeland Improvement
Obstruction Reaches	Upland Habitat Restoration
Assessment Units	Road Abandonment/Restoration
Subbasin Boundary	Combined
	Monitoring
	Other



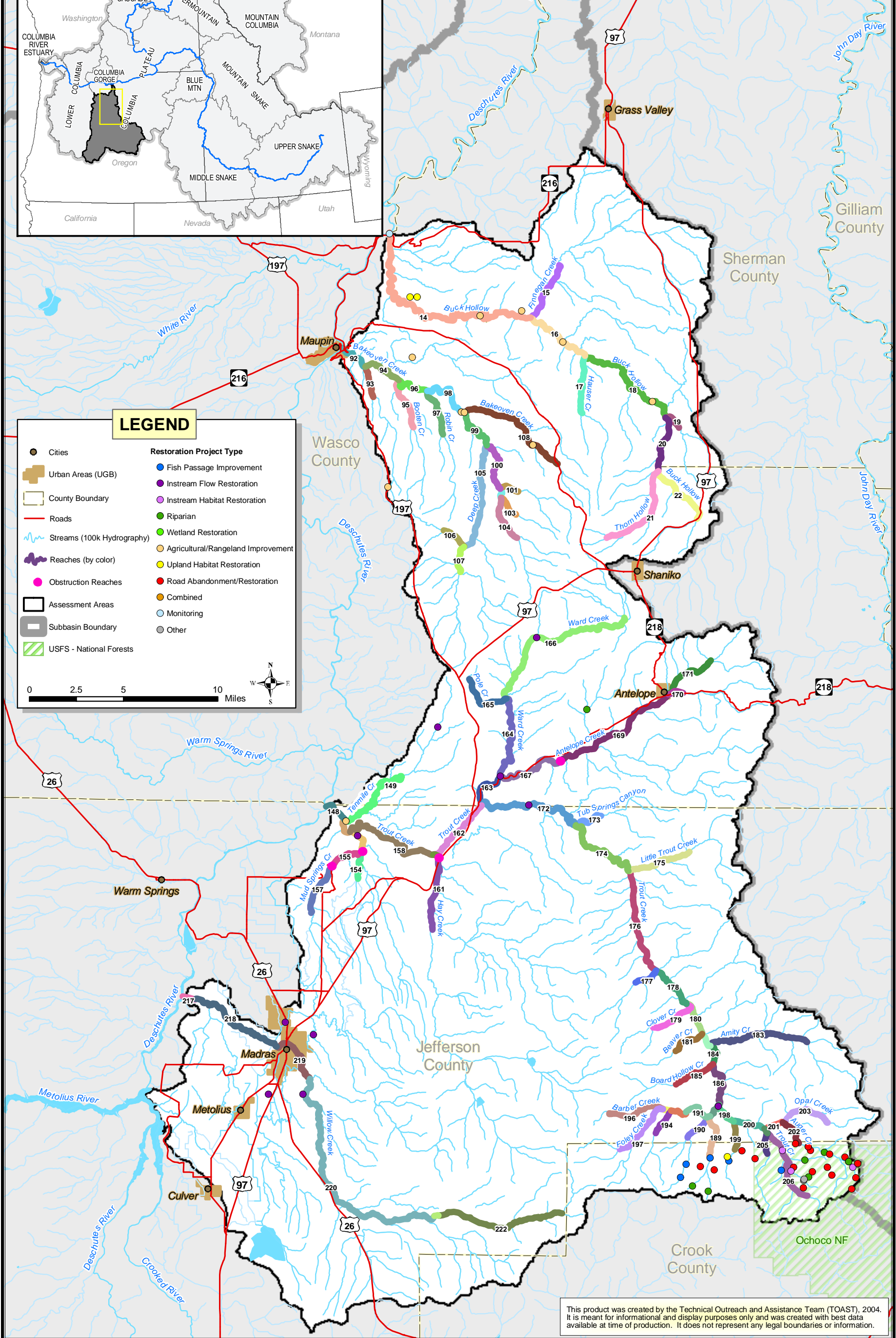
This product was created by the Technical Outreach and Assistance Team (TOAST), 2004. It is meant for informational and display purposes only and was created with best data available at time of production. It does not represent any legal boundaries or information.

Subbasin within the Columbia Basin Ecoprovinces



# DESCHUTES REACH SYSTEM

## Lower Deschutes Eastside



### LEGEND

● Cities	<b>Restoration Project Type</b>
■ Urban Areas (UGB)	● Fish Passage Improvement
▭ County Boundary	● Instream Flow Restoration
— Roads	● Instream Habitat Restoration
~ Streams (100k Hydrography)	● Riparian
● Reaches (by color)	● Wetland Restoration
● Obstruction Reaches	● Agricultural/Rangeland Improvement
▭ Assessment Areas	● Upland Habitat Restoration
▭ Subbasin Boundary	● Road Abandonment/Restoration
▨ USFS - National Forests	● Combined
	● Monitoring
	● Other

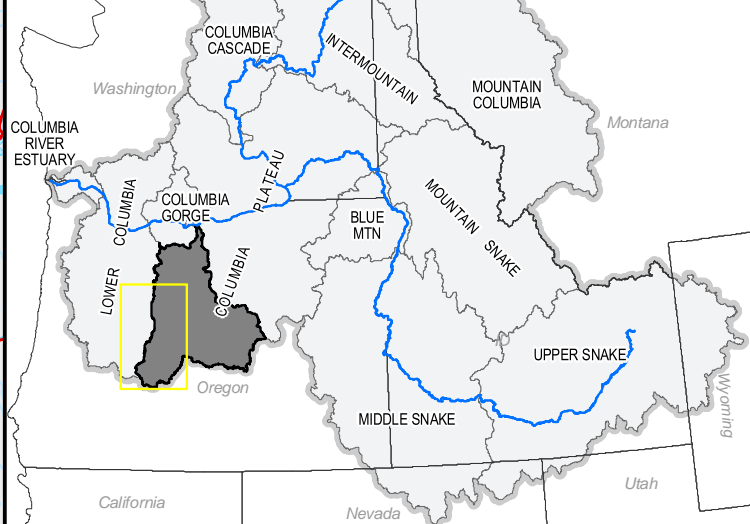
0 2.5 5 10 Miles

This product was created by the Technical Outreach and Assistance Team (TOAST), 2004. It is meant for informational and display purposes only and was created with best data available at time of production. It does not represent any legal boundaries or information.

# DESCHUTES REACH SYSTEM

## Cascade Highlands, Middle Deschutes and Upper Deschutes

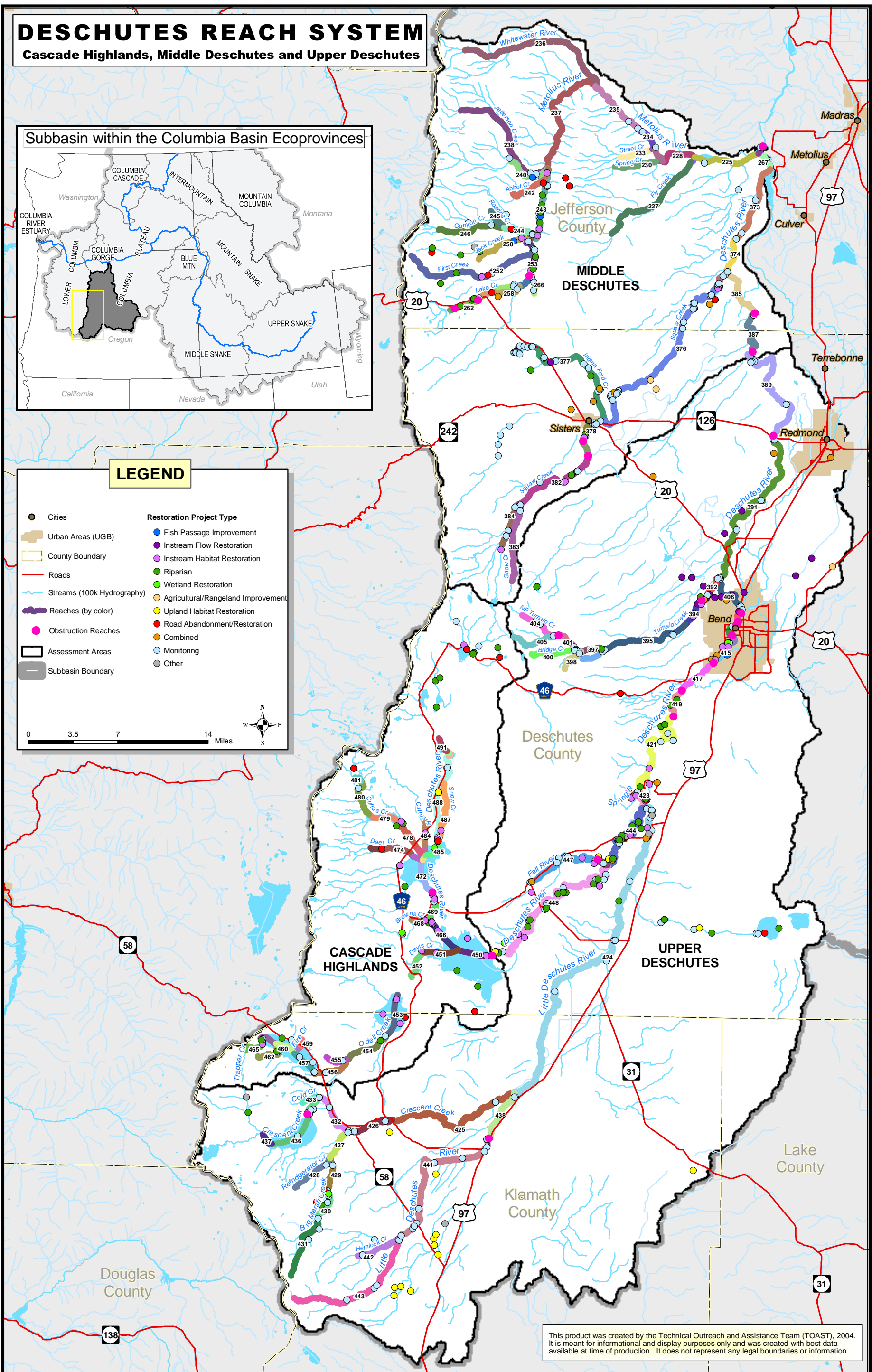
### Subbasin within the Columbia Basin Ecoprovinces



### LEGEND

● Cities	<b>Restoration Project Type</b>
■ Urban Areas (UGB)	● Fish Passage Improvement
▭ County Boundary	● Instream Flow Restoration
— Roads	● Instream Habitat Restoration
— Streams (100k Hydrography)	● Riparian
— Reaches (by color)	● Wetland Restoration
● Obstruction Reaches	● Agricultural/Rangeland Improvement
▭ Assessment Areas	● Upland Habitat Restoration
▭ Subbasin Boundary	● Road Abandonment/Restoration
	● Combined
	● Monitoring
	● Other

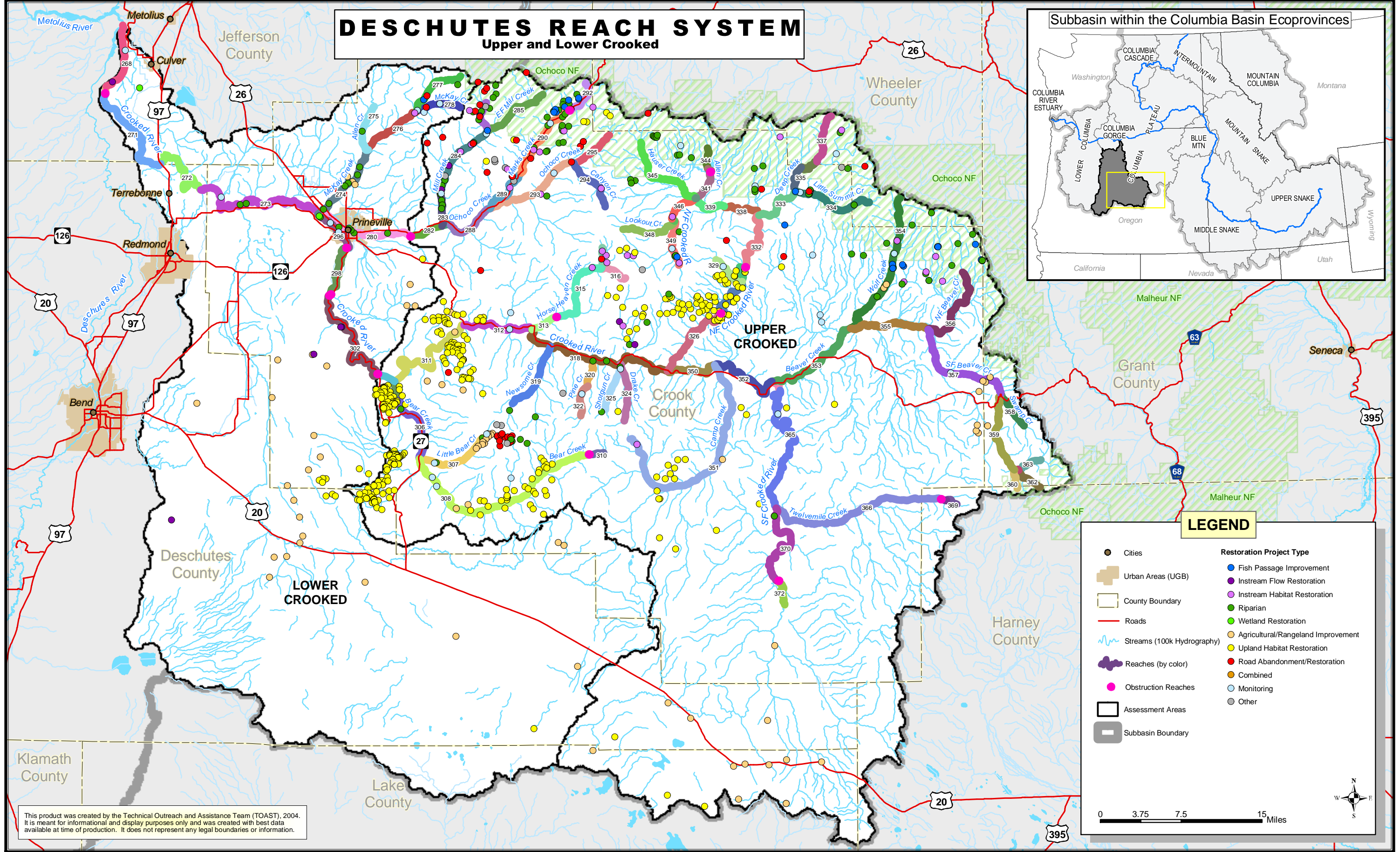
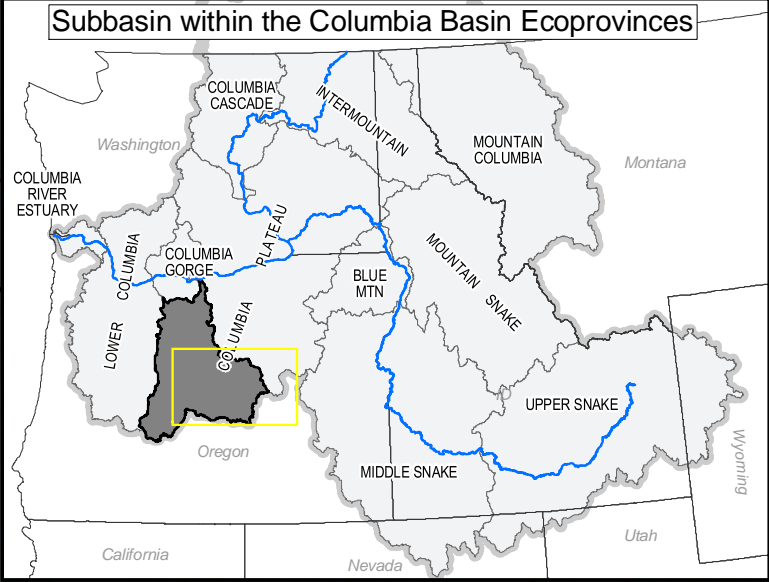
0 3.5 7 14 Miles



This product was created by the Technical Outreach and Assistance Team (TOAST), 2004. It is meant for informational and display purposes only and was created with best data available at time of production. It does not represent any legal boundaries or information.

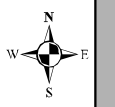
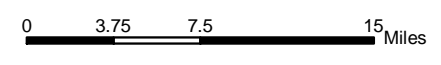
# DESCHUTES REACH SYSTEM

## Upper and Lower Crooked



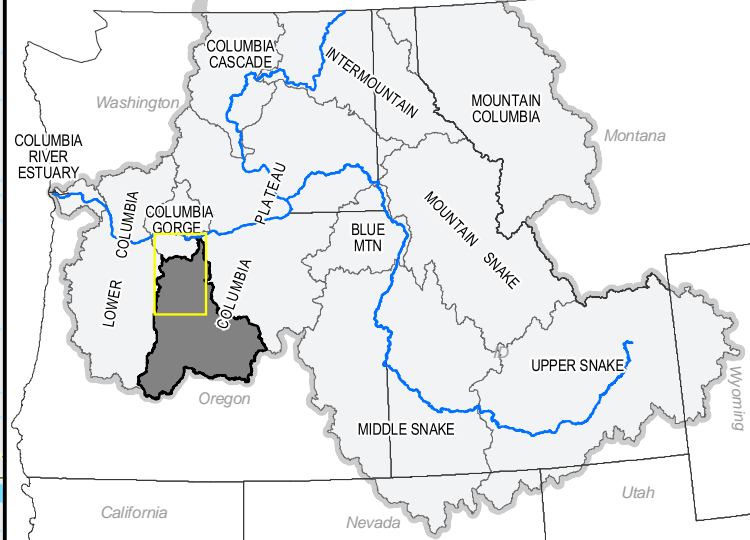
### LEGEND

- Cities
  - Urban Areas (UGB)
  - County Boundary
  - Roads
  - ~ Streams (100k Hydrography)
  - Reaches (by color)
  - Obstruction Reaches
  - Assessment Areas
  - ▭ Subbasin Boundary
- Fish Passage Improvement
  - Instream Flow Restoration
  - Instream Habitat Restoration
  - Riparian
  - Wetland Restoration
  - Agricultural/Rangeland Improvement
  - Upland Habitat Restoration
  - Road Abandonment/Restoration
  - Combined
  - Monitoring
  - Other



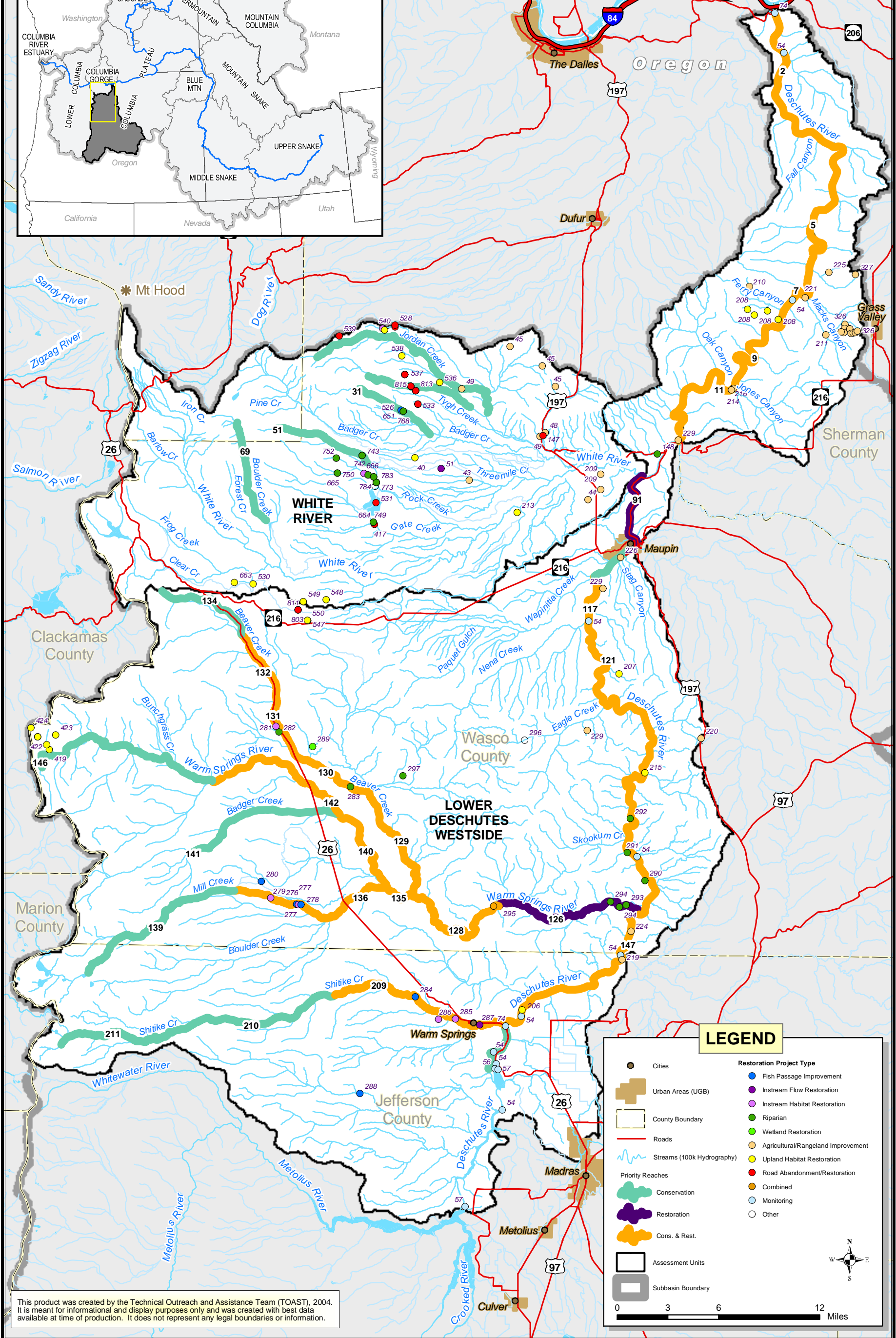
This product was created by the Technical Outreach and Assistance Team (TOAST), 2004. It is meant for informational and display purposes only and was created with best data available at time of production. It does not represent any legal boundaries or information.

Subbasin within the Columbia Basin Ecoprovinces



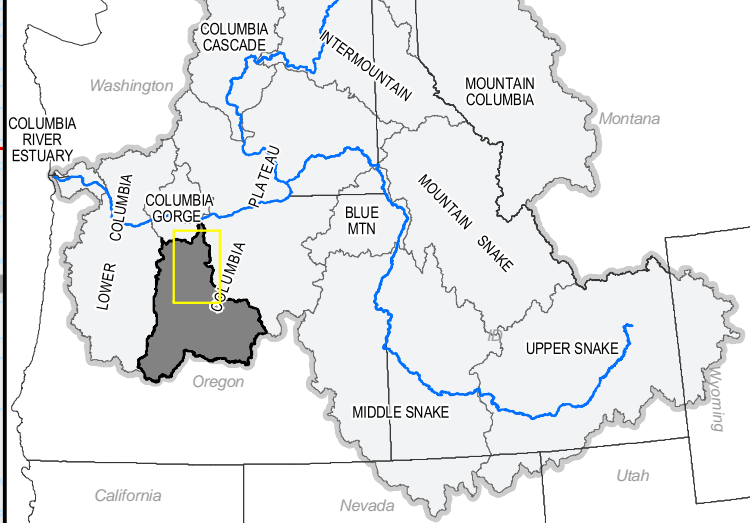
# DESCHUTES PRIORITY REACHES

## Lower Deschutes Westside and White River



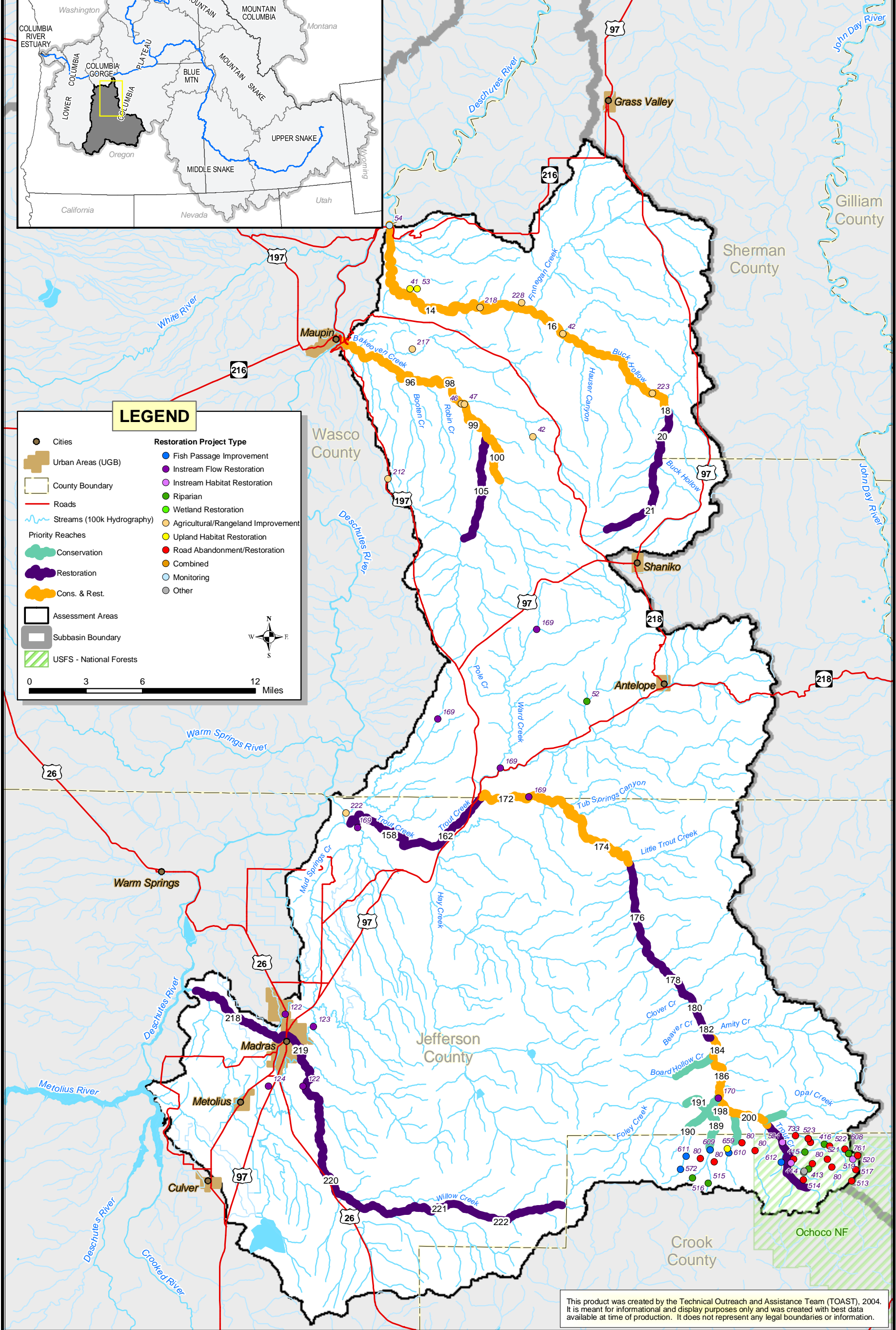
This product was created by the Technical Outreach and Assistance Team (TOAST), 2004. It is meant for informational and display purposes only and was created with best data available at time of production. It does not represent any legal boundaries or information.

Subbasin within the Columbia Basin Ecoprovinces



# DESCHUTES PRIORITY REACHES

## Lower Deschutes Eastside



### LEGEND

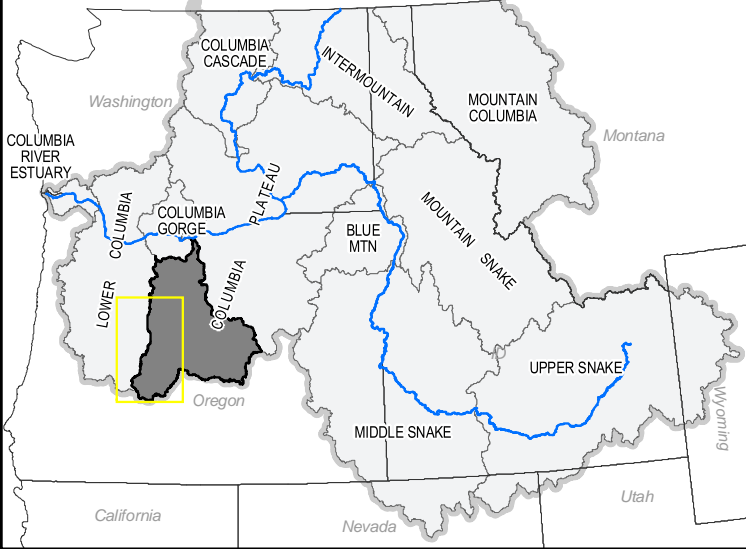
- |                              |                                      |
|------------------------------|--------------------------------------|
| ● Cities                     | <b>Restoration Project Type</b>      |
| ■ Urban Areas (UGB)          | ● Fish Passage Improvement           |
| □ County Boundary            | ● Instream Flow Restoration          |
| — Roads                      | ● Instream Habitat Restoration       |
| ~ Streams (100k Hydrography) | ● Riparian                           |
| <b>Priority Reaches</b>      | ● Wetland Restoration                |
| ● Conservation               | ● Agricultural/Rangeland Improvement |
| ● Restoration                | ● Upland Habitat Restoration         |
| ● Cons. & Rest.              | ● Road Abandonment/Restoration       |
| □ Assessment Areas           | ● Combined                           |
| ■ Subbasin Boundary          | ● Monitoring                         |
| ■ USFS - National Forests    | ● Other                              |

This product was created by the Technical Outreach and Assistance Team (TOAST), 2004. It is meant for informational and display purposes only and was created with best data available at time of production. It does not represent any legal boundaries or information.

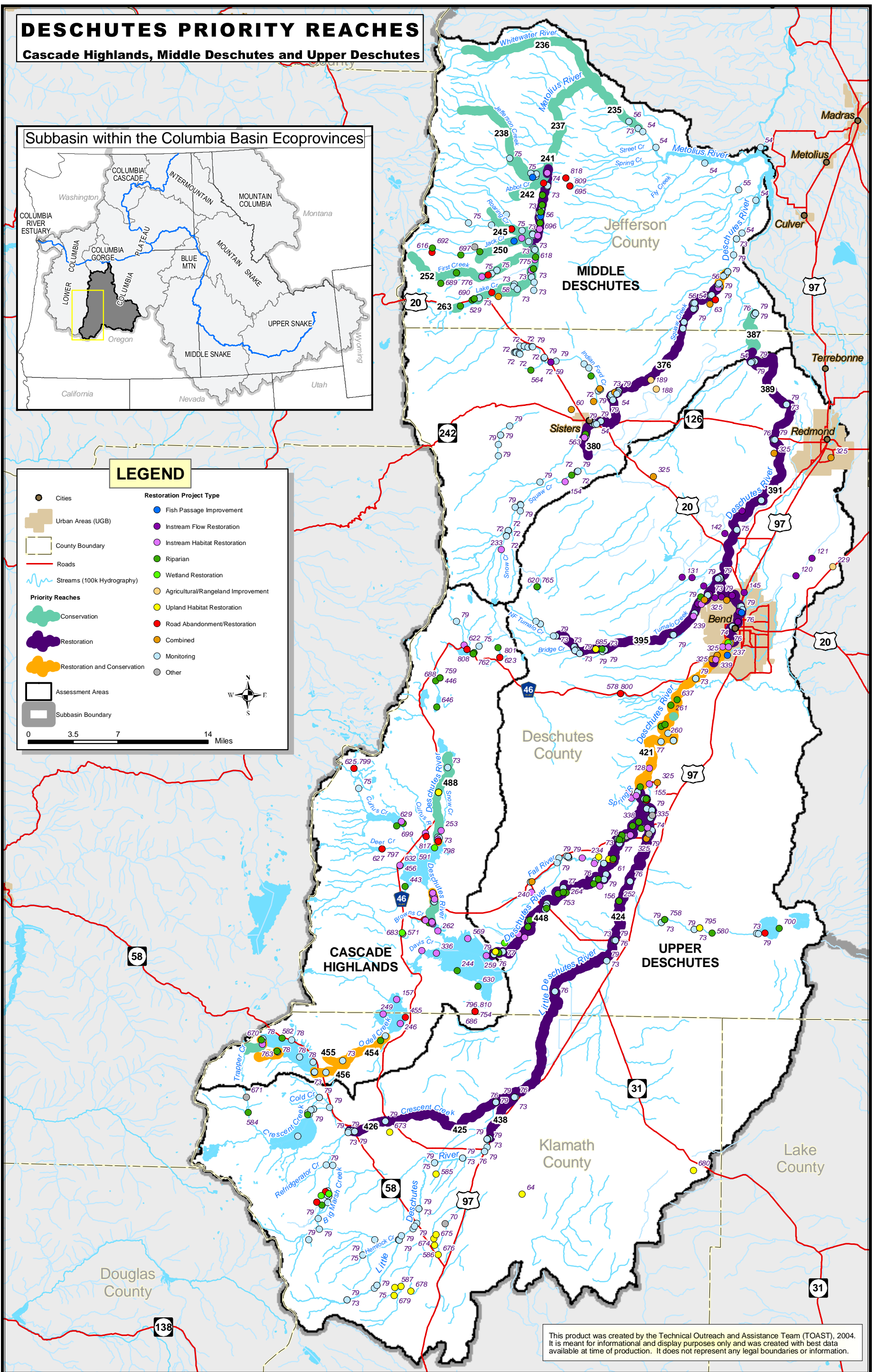
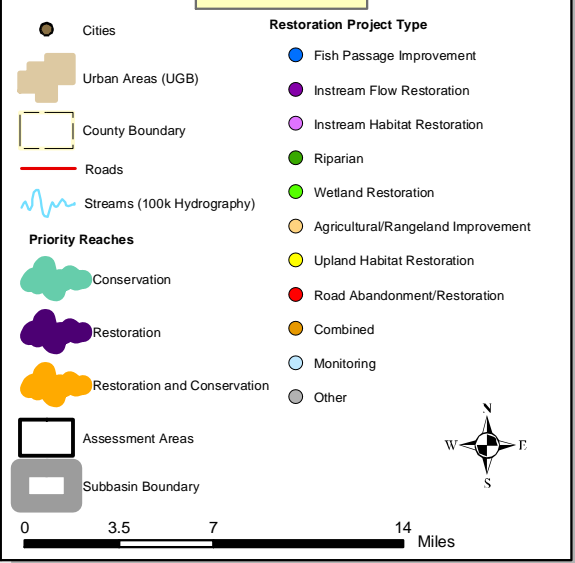
# DESCHUTES PRIORITY REACHES

## Cascade Highlands, Middle Deschutes and Upper Deschutes

### Subbasin within the Columbia Basin Ecoprovinces



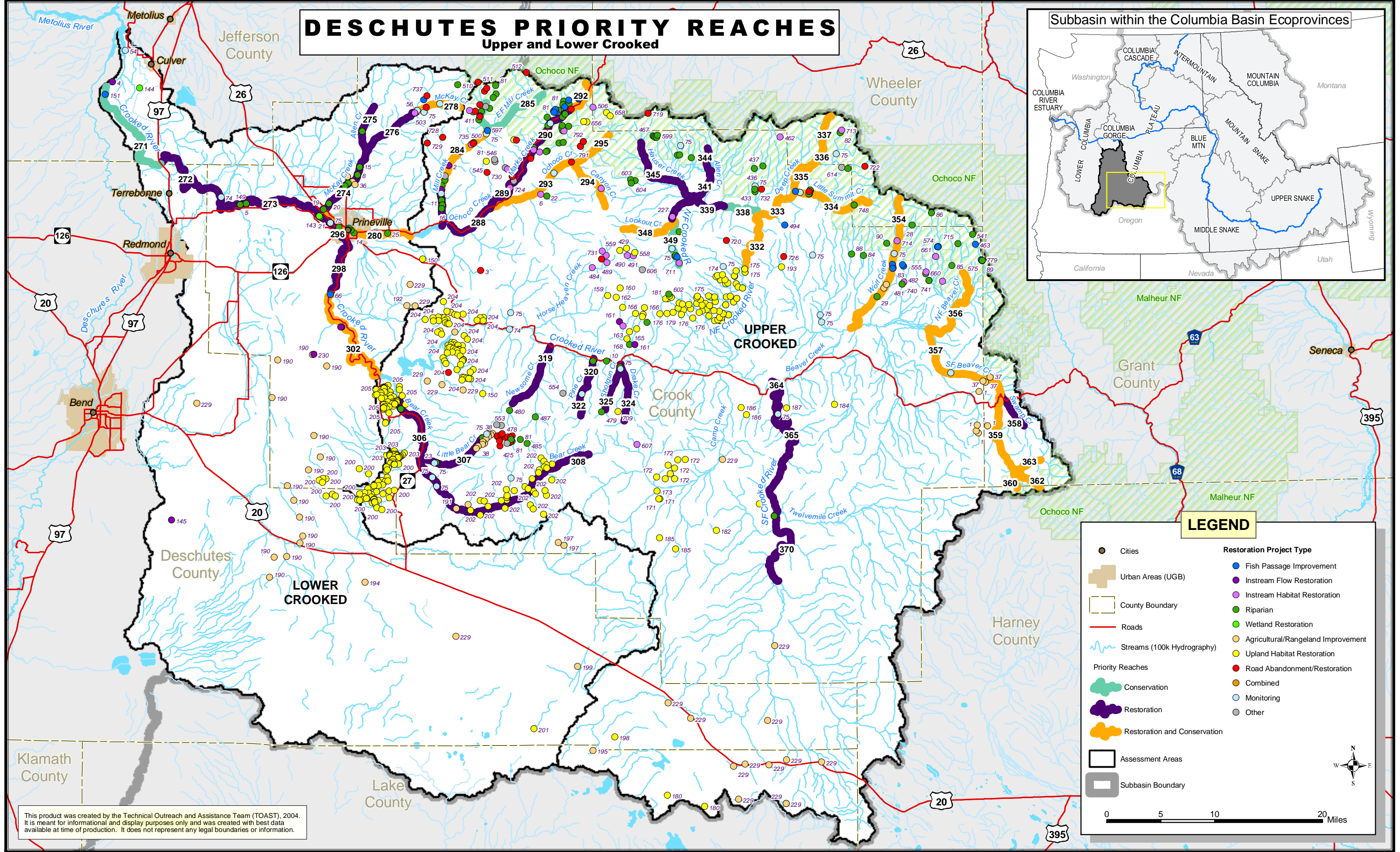
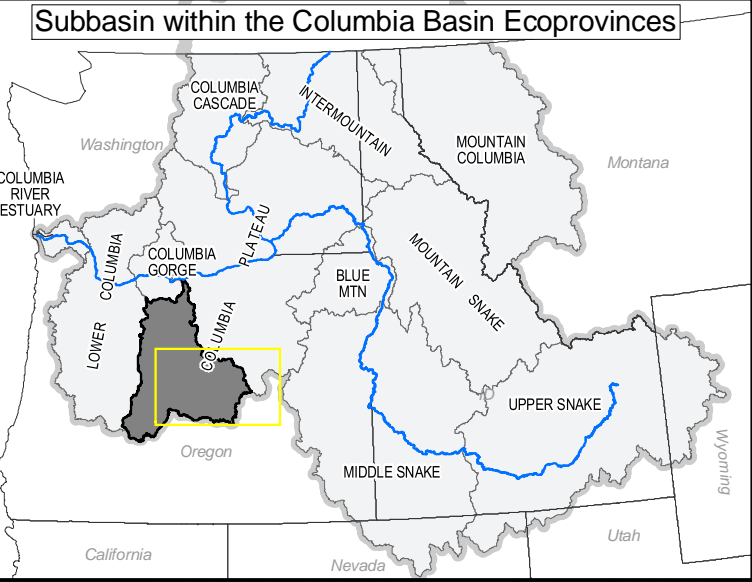
### LEGEND



This product was created by the Technical Outreach and Assistance Team (TOAST), 2004. It is meant for informational and display purposes only and was created with best data available at time of production. It does not represent any legal boundaries or information.

# DESCHUTES PRIORITY REACHES

## Upper and Lower Crooked



### LEGEND

	Cities		Fish Passage Improvement
	Urban Areas (UGB)		Instream Flow Restoration
	County Boundary		Instream Habitat Restoration
	Roads		Riparian
	Streams (100k Hydrography)		Wetland Restoration
	Priority Reaches		Agricultural/Rangeland Improvement
	Conservation		Upland Habitat Restoration
	Restoration		Road Abandonment/Restoration
	Restoration and Conservation		Combined
	Assessment Areas		Monitoring
	Subbasin Boundary		Other

0 5 10 20 Miles

This product was created by the Technical Outreach and Assistance Team (TOAST), 2004. It is meant for informational and display purposes only and was created with best data available at time of production. It does not represent any legal boundaries or information.